



**KARNATAKA STATE OPEN UNIVERSITY**



Mukthagangothri, Mysuru – 570 006



Accredited with NAAC A+ Grade

**PROSPECTUS**  
**2025-26 JANUARY CYCLE**

**BACHELOR OF SOCIAL WORK (B.S.W)**  
CBCS Semester Scheme (3 Years)



Website: [www.ksoumysuru.ac.in](http://www.ksoumysuru.ac.in)

Help Line: 8690544544 email: [techsupport@ksouportal.com](mailto:techsupport@ksouportal.com)

Office Phone EPABX No.: 0821-2500981, 2519941, 2519943, 2519952

## Attention

Application for admission to Open Distance Learning (ODL) (Offline) Programme shall be submitted only through online. The detailed instruction for admission is available in KSOU official website (<http://www.ksoumysuru.ac.in>).

## Important Dates

Commencement of Admissions	<b>As per the admission Notification</b>	visit <a href="http://www.ksoumysuru.ac.in">http://www.ksoumysuru.ac.in</a> for updated information.
Last date of Admission	<b>As Per UGC Directions</b>	

\* The last date for admission will be as per UGC (DEB) directions and students are informed to visit <http://www.ksoumysuru.ac.in> for updated information.

## Steps for Admission

*Candidates are hereby informed to read the instructions given in the prospectus carefully, before filling-up the application through online*

<http://ksouportal.com/Views/ApplicantLogin.aspx>.

- *Learners can create ABC ID through their digilocker account.*
- *Learners can create DEB ID by registering themselves on DEB portal <https://deb.ugc.ac.in> by using their ABC ID.*

**Admission for various Programmes can be made through any of the following modes:**

**Admission through Regional Centres or Head Office directly.**

- Student should create Academic Bank of Credits (ABC) ID & Distance Education Bureau (DEB) ID.
- Candidates shall apply through KSOU website: [www.ksoumysuru.ac.in](http://www.ksoumysuru.ac.in). and click on admission portal or visit directly nearest Regional Centres established in various District Head Office of the State **OR** KSOU Head Quarters (Mysuru).
- Candidates shall upload required self-attested scanned documents.
- Candidates shall visit nearest Regional Centres/ Head Office, Mysuru along with necessary original document and one set of photo copy.
- Candidates shall pay the prescribed admission fee after verification of documents.
- **Candidates shall pay the fee as prescribed by the University through online only. Candidates are instructed to not to pay any fee in any manner to any person or the Learner Support Centres (LSC / Study Centres). In spite of these instructions University is not responsible for any such payment.**

- Candidates shall collect roll number, study material and Identification Card from the Regional Centre or the KSOU Head office where the candidate is admitted.

### **Self Admission**

- Student should create Academic Bank of Credits (ABC) ID & Distance Education Bureau (DEB) ID.
- Candidates shall visit KSOU website: [www.ksoumysuru.ac.in](http://www.ksoumysuru.ac.in) and click on the **admission portal** <http://ksouportal.com/Views/ApplicantLogin.aspx>.
- Candidates shall fill the application and select nearest Regional Centre.
- Candidates shall select the Learner Support Centre for the purpose of Weekend Contact Classes / Personal Contact Programme (PCP).
- Candidates shall upload required self-attested scanned documents.
- Candidates shall pay stipulated processing fee online.
- Candidates shall visit selected Regional Centres / Head Office, Mysuru along with required original documents and one set of photo copy for verification.
- Candidates shall pay the stipulated programme fee after verification of documents.
- Candidates can collect roll number, study material and ID card.

### **SPECIAL ATTENTION**

- **Karnataka State Open University has been awarded NAAC A+ Grade.**
- Karnataka State Open University is only and exclusive distance education provider in the Karnataka State. Government of Karnataka vide its Gazettee No. DPAL 43 SHASANA 2020 dated 30-12-2020 has notified that No university except Karnataka State Open University shall offer the programme in Open and Distance learning mode.
- The programmes offered by the University are approved by the UGC from 2023-24 to 2027-28 vide notification No.UGC-DEB Letter No:4-1/2023 (DEB-III) dated 16.06.2023 & F.No.4-1/2023(DEB-III), dated:04.06.2023
- The Online programmes offered by the University are entitled by the UGC from 2023-24 to 2027 -28 vide notification No.UGC-DEB Letter No:39-2/2023(DEB-I), dated 17.08.2023.
- The UGC in its public notices stated that the degree/diploma/certificate Programme awarded through distance mode are on par with corresponding degree/diploma/certificate course obtained through traditional universities. The degrees acquired through distance education are recognized for the purpose of employment in State / Central Government, MNCs, Private Sector etc., and also for pursuing higher education in other educational institutions.
- The University is recognized from 2023-24 to 2027-28 and the admission taken during recognition period stands valid till the completion of programme even if the university does not have recognition for further years.

- The University operates within the territorial jurisdiction of Karnataka State; however, the candidates outside the territorial jurisdiction of Karnataka State are also eligible to enroll for the academic programmes of KSOU, provided they shall be admitted in any one of the Regional Centres / KSOU, Head office, Mysuru.
- The University will impart quality education to create quality human resources, which help in capacity development.
- Candidates studying any Degree programmes in KSOU / other University can also pursue any under graduate degree / post graduate degree under dual degree facility of KSOU, Post Graduate Certificate, a Diploma / Diploma / or Certificate course in KSOU simultaneously provided they fulfill the eligibility conditions prescribed.
- For Free WiFi facility student should contact Director, Information Technology, KSOU, Mysuru by sending mail to [directoritksou@gmail.com](mailto:directoritksou@gmail.com)

## CONTENTS

Sl. No	Details	Page No
	Vice Chancellor's Message	4
	About the University	5
	Board of Management	6
	Officers of the University	7
1	UGC ODL & OL Regulation -2020	7
2	Schools of Studies	7-8
3	Faculty Profile	8
4	Contact Details of Other Officers of the University	8-10
5	Important Instructions to the students	11-13
6	Other Programme offered	14-15
7	Tentative Academic Planner for B.SW.	15
8	Bachelor of Library and Information Science (B.SW.)	16
	8A. For Direct Admissions to 2 <sup>nd</sup> /3 <sup>rd</sup> year BA/B.Com./B.Sc.(General)/ B.Sc.– IT /B.C.A/ BBA/ BSW Programmes:	
	8.1 Paymet of Admission fee	16-17
	8.2 Programme Structure	17-22
	8.3 Instructional Delivery System	22-24
	8.4 Study Material and its Delivery	24
	8.5 Personal Contact Programme	24
	8.6 Credit System	24
	8.7 Maximum Period for Compition of Programme	24
9	Choice Based Credit Sytem	25-26
10	Evaluation	26-27
11	Information about Examination -B.SW.	27-30
12	Student Support	31-34
13	Learners Welfare Centre	34-36
14	Other information	36-41
15	Convocation	41
16	Quality Initiatives	41-42
17	Digital Initiatives for Higher Education – UGC	43-44
	NAD/ABC	45-46
	Annexure I – Head Quarters, Regional Centres (RC) and Learner Support Centres (LSC),	47-49
	Annexure-II Admission Fees Structure	50-61
	Annexure III - Student Scholarship	62-66
	Annexure IV - List of Gold Medals and Cash Prizes for meritorious Students	67-69
	Annexure V - Details of General Fee	70-71

## VICE-CHANCELLOR'S MESSAGE



**Dear Learner,**

I have great pleasure in informing you that KSOU is accredited with A+ grade by NAAC (3.31 CGPA). It stands second best State Open University in India. The family of KSOU welcomes you to pursue the academic programmes you have chosen to achieve not only academic excellence but also to fulfill the desire of your career. The University established by the Act of State Legislature has created wonderful academic ambience. The programmes offered by the university have been recognized by University Grants Commission. Therefore, the degrees are valid for employment opportunities across the country. The 'core values' of the University is derived from its vision 'Higher Education to Everyone, Everywhere'. The ultimate touchstone of providing quality higher education is the motto of the university. Today, higher education stands at the crossroads of keeping pace with the emerging needs of the country.

The University has adopted a school concept in its functioning. Different schools headed by Directors for effective functioning of various academic programmes under different schools like Humanities, Social Sciences, Commerce, Education and Sciences. Blend of interdisciplinary and professional approach is adopted to pedagogy and research. The University believes that rigors of the contemporary world require competent quality human resources to create knowledge based society. The academic activities of the programmes are routed through well-established department/s led by the Chairperson/s. Well-qualified teaching faculty with equally dedicated non-academic team is an asset to the university, which is always, committed for the welfare of the students.

The University functions in a 3-tier system of student support service, namely Headquarters, Regional Centres and Learners Support Centres spread all over Karnataka. The learners can undergo teaching learning process in the notified Regional Centres/Learner Support Centres. The University has adopted a mechanism to deliver Self Learning Material by print, limited audio visual and Counseling/Personal Contact Programme. As a learner, you will have greater opportunity to gain knowledge and skill through these mechanisms. The academic counselors will play a strategic role and enable you from the enrollment of the programme till you accomplish the goal. A proper blending of the knowledge and skill will be imparted so that you will be transformed as a good citizen to contribute to the development of society and the country.

The UGC in its Public Notice stated that the Degree/Diploma/Certificate Programme awarded through distance mode is on par with corresponding Degree/ Diploma/ Certificate Programme obtained through conventional universities. The degrees acquired through distance education are recognized for the purpose of employment in State/Central Government, MNCs, Private Sector etc. It also enables you to pursue higher education in other educational institutions. Therefore, you have greater opportunity of pursuing Higher Education without any kind of fear about your career.

I am sure you will enjoy good experience with services rendered by the university through its Regional Centres and Learner Support Centres, besides Headquarters. I wish you all the best in your academic endeavors.

**Prof. Sharanappa V Halse**

## **ABOUT THE UNIVERSITY**

### **Karnataka State Open University is recognized by the University Grants Commission under (Open and Distance Learning) and Online Regulation 2020**

The University was established in June 1996 with a vision “**Higher Education to Everyone, Everywhere**”. The University blossomed in the era of globalization in which the economies of the world are being transformed from their original closed self-sustaining structure to the globalized context, where they can expose themselves to the competitive world. This transition ushered in new changes in the arena of knowledge emphasising application besides accumulation of facts. The Karnataka State Open University in order to cope with the present global environment, is attempting to integrate interdisciplinary approaches in the dissemination of knowledge with the aim of achieving overall human personality development.

Mysuru is a historical centre possessing a rich cultural heritage which had valiant historical events of different kingdoms and humane social setup of incomparable stature. The University has paved the way for realizing its vision at the international arena leading to human welfare. It was started during the year 1996 as its separate entity to cater to the needs of thousands of young aspirants of higher education.

The KSOU is situated at the heart of Mysuru city, The University operates in 50 Acre of land in a fully green ambience. The University is offering UG, PG and Ph.D. programs besides diploma and PG certificate programs in various disciplines. The University is fully equipped with 28 academic departments controlled by the chairpersons and supported by other faculty and non teaching staff. The University is offering various degrees and diploma programme in Humanities, Social Science, Science, Commerce and Management. The KSOU is carved out mainly with an intention of promoting unprivileged group of society and hence the fees for all the courses are at affordable rate.

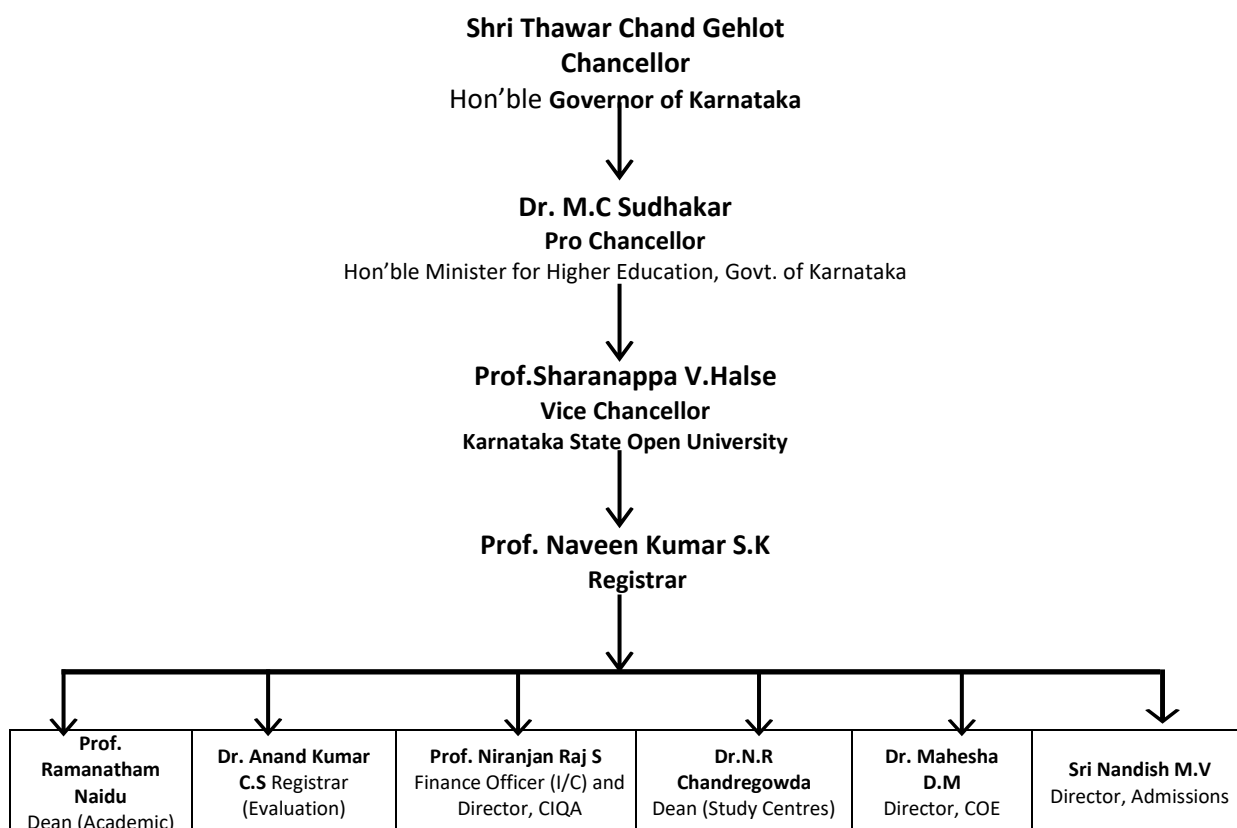
**Special Features:** The Open Distance Learning system is a unique and challenging because, the learners joining Open Distance Learning come from a diverse socio-economic background and with a varied learning background. The present conventional university system could not meet the genuine needs of such students who could not pursue their studies in a conventional university for various reasons. In order to give them an opportunity to pursue their studies in Open - Distance Learning, this University has been established. The major objective of the University is to generate human resources of top quality laying more emphasis on the following issues:

- (1) To transform guiding vision into action plan through various measures.
- (2) To generate high quality human resources through skill training.
- (3) To provide opportunities to those who discontinued their studies.
- (4) To encourage the working class to acquire higher knowledge.
- (5) To facilitate the opportunities to pursue higher education at their own places.
- (6) To provide transparent manner of admission.
- (7) To transform restricted learning to a global-based learning.
- (8) To promote new concept and new direction in higher education.
- (9) To foster multiple imperatives to achieve the national development.
- (10) To play critical role in addressing social imperatives.
- (11) To build innate capacity by creating adequate student – support services.

## **BOARD OF MANAGEMENT**

<b>Sl. No</b>	<b>Members</b>	<b>Position</b>
1	The Vice Chancellor, KSOU	Chairman
2	Secretary in charge of Higher Education, Govt. of Karnataka	Member
3	Secretary to Finance Department, Govt. of Karnataka	Member
4	Vice-Chancellor of any of the Universities in the State of Karnataka (Nominated by the Pro-Chancellor by rotation)	Member
5	Dean (Academic), KSOU	Member
6	Five distinguished persons from the educational, scientific and administrative fields nominated by the Pro-Chancellor	Members
7	Two Members of the Karnataka Legislative Assembly (Elected from among themselves)	Members
8	Two Members of the Karnataka Legislative Council (Elected from among themselves)	Members
9	The Registrar, KSOU	Secretary

## **OFFICERS OF THE UNIVERSITY**



## 1. UGC ODL & OL Regulation - 2020

The University Grants Commission has published Regulation governing Open Distance Learning (ODL) and Online Learning (OL) Regulations under Section 26(1) read with Clause (j) of Section 12(5) of the UGC Act, 1956 in the official Gazette of India dated 04-09-2020. The Regulation is mandatory and has to be followed by all the institutions offering education through ODL mode. The UGC has directed to adopt concept of schools in the academic governance of the University. The KSOU is recognized by the UGC and strictly adheres to all the norms as specified in the regulations.

## 2. Schools of Studies

Keeping in view of the directions of the UGC, the University has established six schools of studies. The following schools of studies are operative which are led by school directors and the following Departments of Studies & Research function under them:

- 1.The School of Languages - Prof. Ramanathm Naidu M.
- 2.The School of Social Sciences - Prof. Shankaranarnappa
- 3.The School of Commerce - Prof. Ramananda M. S.
- 4.The School of Management - Prof. C. Mahadevamurthy
- 5.The School of Sciences - Prof. N.G Raju
- 6.The School of Education - Prof. Niranjan Raj. S

### School of Humanities:

1)	Department of Studies and Research in Kannada	5)	Department of Urdu
2)	Department of Studies and Research in English	5)	Department of Telugu
3)	Department of Hindi	6)	Department of Linguistics
4)	Department of Sanskrit		

### School of Social Sciences:

1)	Department of Studies and Research in History	5)	Department of Studies and Research in Political Science
2)	Department of Studies and Research in Ancient History and Archeology	6)	Department of Studies and Research in Public Administration
3)	Department of Studies and Research in Economics	7)	Department of Studies and Research in Journalism & Mass Communication
4)	Department of Studies and Research in Sociology		

### School of Commerce & Management:

Department of Studies and Research in Commerce.

### School of Commerce & Management:

Department of Studies and Research in Business Administration.

### School of Sciences:

1)	Department of Studies and Research in Biochemistry	9)	Department of Studies and Research in Library and Information Science
2)	Department of Studies and Research in Biotechnology	10)	Department of Studies and Research in Mathematics

3)	Department of Studies and Research in Chemistry	11)	Department of Studies and Research in Microbiology
4)	Department of Computer Science	12)	Department of Physics
5)	Department of Studies and Research in Environmental Science	13)	Department of Studies and Research in Psychology
6)	Department of Studies and Research in Food Science and Nutrition	14)	Department of Studies and Research in Information Technology
7)	Department of Studies and Research in Geography	15)	Department of Studies and Research in Botany
8)	Department of Studies and Research in zoology		

### School of Education :

Department of Education

### 3. Faculty Profile

Sl. No.	Name of the Faculty	Designation	Qualification	Specialiazation	Experie nce in Years	EXT Nos.
<b>Department of Studies and Research in Master of Social Work</b>						
01	Prof. B.S Gunjal	Professor	MSW., Ph.D	Social Work	35 Years	9902191686
02	Sri. Sukesh P	Assistant Professor (Temporary)	M.S.W., K-SET	Social Work	01 Year	9108057959
03	Sri. Vinod Patel	Assistant Professor (Temporary)	M.S.W., K-SET	Social Work	01 Year	8970911140

- **EPABX Phone Lines: 0821 – 2519941 / 2519943 / 2519948/ 2519952**
- **Helpline Number: 8800335638 / 8690544544**
- **Digital Academic Platform App (DAP) (LMS) 9873037405 (Regarding Lessons (Soft Copy) and Internal Assignment)**

### 4. Contact Details of Other Officers of the University

Sl. No.	Officers	Designation	For information related to	Mobile Number
1	Prof. Niranjan Raj S.	Professor	Director – CIQA & PMEB	9886859350
2	Prof. Kavitha Rai	Professor	Coordinator – Akkamahadevi Study Chair	9482206129
3	Prof. Jayapal	Professor	Nodal Officer, Centre for Research on Social Inclusion	7406600034
4	Prof. Pavithra R H	Professor	1. Coordinator – Mahatma Gandhiji Study Chair 2. Placement Officer	9845659987
5	Dr. Shalva Pille Iyengar	Professor	1. Nodal Officer – NAD 2. Coordinator – Sri Nalwadi Krishnaraja Wodeyar Study Chair	9686215043
6	Prof. Raju N G	Professor	AISHE Nodal Officer	9448267255
7	Dr. Mahesh D.M	Associate Professor	1. Director IT 2. Nodal Officer –NKN 3. ICT Coordinator & 4. Director Online Programme	9480326709
8	Dr. Manjunatha C.S.	Assistant Professor	Dy. Director – CIQA	8762100678
9	Dr. Mahesha.V	Associate Professor	Co-ordinator –CIQA	9844667411
10	Dr. Harsha T S	Associate Professor	Director, R&D	944178802

11	Dr. Anitha C	Associate Professor	Principal Investigator – e-content development (UGC & NME-ICT)	9148531967
12	Dr. Rashmi B.S	Assistant Professor	1. Nodal Officer – ICT 2. Coordinator UGC – MOOCS 3. Special Officer – IT	9880983081
13	Dr. Rajeshwari H	Associate Professor	Coordinator NAAC Cell	9845528357
14	Dr. Nataraju G	Associate Professor	Nodal Officer – AIU	9741219820
15	Sri Niranjana S V	Assistant Professor	Nodal Officer – AIU Coordinator – Mathematics	9535284356
16	Dr. Hemalatha M.S	Associate Professor	Nodal Officer, Intellectual Property Cell	9482566371
17	Dr. Nataraju Angaswamy	Associate Professor	Nodal Officer Centre for Innovation and Incubation	9620697355
18	Dr. Hemalatha.R	Associate Professor	Coordinator – Jyanavani Audio & Visual Studio	9535282069
19	Dr. P.M. Chinnaiah	Associate Professor	Special Officer – Scholarship Cell	9164556402
20	Dr. Ananda Gowda N	Associate Professor	Coordinator – Indian Constitutional Day Coordinator – Legal Cell	9916007312
21	Dr. Chandrashekar J S	Associate Professor	Coordinator – Skill Development	9663061978
22	Dr. Shivakumara Swamy	Associate Professor	Coordinator – Dr. B.R. Ambedkar Study Chair	9972165817
23	Dr. Jyothi Shankar	Associate Professor	Coordinator – Swamy Vivekananda Study Chair	9448603159
24	Dr. Chandre Gowda N R	Associate Professor	Coordinator – Kuvempu Research and Extension Centre	9449668997
25	Dr. Sharanamma R	Associate Professor	Coordinator – Dr. Babu Jagajeevan Ram Study Chair	9739970866
26	Dr. V.M Ramesha	Associate Professor	1. Coordinator, SCT/TSP 2. Coordinator Ramamanohara Lohiya Study Chair	9110698230
27	Dr. Santhosh Naik R	Associate Professor	1. Coordinator – Dr. B.V. Karantha Study Chair 2. Coordinator - Social Media Organization 1. Coordinator – Prasaaranga	9108260220
28	Dr. T.P. Shashikumar	Associate Professor	Special Officer – Ph.D Cell	9538236370
29	Dr. Prakash K	Librarian	Library	9448066788
30	Dr. Gopala Swamy M.	Librarian	Library	9035125501
31	Dr. Sheela V	Librarian	Library	9341024224
32	Sri. Nandeesh M.V	Deputy Registrar	Director (Admissions) (Additional Charge)	8618978213
33	Sri. S.M. Chandresh	Deputy Registrar	Study Material	8951242616
34	Sri Sridhar M.	Deputy Registrar (I/C)	Administrative	9964274173
35	Sri. Suresh C P	Deputy Registrar (I/C)	Administrative	9880813632
36	Sri. Deepak N	Deputy Registrar (I/C)	Authority Cell	8073317163
37	Sri Vishal N. Raj	Deputy Registrar (I/C)	V.C. Personal Section	9964305126
38	Sri Suresh	Deputy Director (I/C)	Dean (Academic)	9448600275
39	Sri S.N. Sathish	Deputy Registrar	Examination	9945364563
40	Smt. Anupama Laxman	Deputy Registrar	Examination	9480405592
41	Smt. Deepashri	Deputy Registrar (I/C)	Examination	9945734313
42	Smt. Jagadamba J	Deputy Registrar (I/C)	Examination	8073750192
43	Sri Rajashekar H R	Deputy Registrar (I/C)	Examination	7975077609
44	Sri Sathish B Kulkarni	Deputy Registrar (I/C)	Examination	9845491995
45	Sri Pradeep Giri S	Deputy Registrar (I/C)	Examination	9448601846
46	Smt Manjuladevi	Assistant Registrar (I/C)	Examination	7406646153
47	Smt. Shubha M	Assistant Registrar (I/C)	Examination	6360970593
48	Sri Janardhana C	Assistant Registrar (I/C)	Examination	9901209621
49	Sri Virupakshaiah B.G	Deputy Director (I/C)	Finance	9986503699
50	Smt. Shobha M	Deputy Registrar (I/C)	I.T, - IP GRS & CPGRAMS	9663476572
51	Smt. Nalini Jayram	Deputy Registrar (I/C)	Study Centres	9916231813
52	Sri Nagendra R	Assistant Registrar	Scholarship Cell	8073331535
53	Sri Raghu L.J	Assistant Registrar (I/C)	Admission	9611418726
54	Sri Prasanna P.S	Assistant Registrar (I/C)	Admission	9035395137
55	Sri Muralidhara	Assistant Registrar (I/C)	Admission	8123469017
56	Sri Gurudatt Urs K	Assistant Registrar (I/C)	Engineering	9886637143
57	Sri Narayana V	Assistant Registrar (I/C)	Engineering	9980615536
58	Sri Shivakumar R	Assistant Registrar (I/C)	Library	9663084454

59	Smt Komala M.H	Assistant Registrar (I/C)	Study Material	9480034176
60	Sri Jayaraj	Assistant Registrar (I/C)	Scholarship Cell	9113805113
61	Smt Dhanalakshmi	Assistant Registrar (I/C)	Bengaluru R.C-1 (Bapujinagar)	9980860299
62	Sri Manjunatha T	Assistant Registrar (I/C)	Chitradurga R.C	9916372818
64	Sri Manjunatha	Assistant Registrar (I/C)	Mangalore R.C	9902638643
65	Dr. Vijaya Kumar Avarekadu	Assistant Translator	Co-ordinator, Department of Translation Studies	9845363573
66	Dr. Mahadeva A.S	Assistant Translator	Co-ordinator, Department of Studies in Linguistics	9902445879
67	Sri Sathyanarayana Gowda	Coordinator	Coordinator – Competitive Exam Training Cell	9448800816

If the queries are not solved at the above levels, then only the Registrar and Registrar (Evaluation), KSOU, Mysuru maybe contacted.

## 5. Important Instructions to the students

*Candidates, who wish to seek admission to BSW Course, shall note the following before the submission of application to the University.*

- **Admission is only through online mode.** After successful submission of online application, candidates shall remit the course fee through online. Instructions for online fee payment are available in the university website.
- Application from any other source or mode other than the official website will not be considered for admission.
- Candidates shall pay the fee as prescribed by the University through online only. Candidates are instructed to not to pay any fee in any manner to any person or the Learner Support Centres (LSC / Study Centres). In spite of these Instructions University is not responsible for any such payment.
- Students shall have to pay all the prescribed fees only through online mode.
- The following documents (photo copy) shall be submitted with the application for admission.
  - Marks cards of S.S.L.C or its equivalent
  - Marks cards of P.U.C. or its equivalent
  - Photo copy of the marks cards of Degree of all the years / semesters wherever it is necessary.
  - Caste certificate in case of candidates belonging to Scheduled Caste / Scheduled Tribe (if applicable)
  - BPL card in case of women candidates to avail prescribed discount.
  - Income certificate; (if applicable)
  - Aadhaar Card;
  - Two stamp size and two passport size photos to be submitted at the time of verification.
  - If the students wish to change the programme / medium / subjects such students shall apply for the change with in the last date for admission with a penal fee Rs. 1100/- (One thousand Hundred only) as per the rules.
- Duly filled in application along with the fee paid challan (University copy) shall be submitted to the Headquarters / Regional Centers selected by the students immediately.
- Candidates shall write the code number of the opted Regional Centre and Learner Support Centre carefully in the appropriate place in the application (see **Annexure II**).
- Verification of the documents will be made at the Regional Centre / Head Office, Mysuru. During verification the candidate shall produce the relevant original documents.
- Admission sought will become final only after its approval by the University.
- The candidates who are admitted to various programmes shall receive the study materials at the time admission after verification.

- Candidates may seek clarification from the help desk of the University.
  - **The Chairperson** of the concerned Department (refer page no.2 to 4)
- Lateral Entry is permitted, however transfer is permitted as per rule.
- Scheduled Caste / Scheduled Tribe candidates seeking admission are eligible for reimbursement of fee from Social Welfare Department, provided the family income shall be less than the limit prescribed by the Government from time to time (**see Annexure IV**).
- Women candidates under BPL can claim concession of 10% percent on tuition fee, for which they shall produce BPL card issued by the competent authority.
- Cab / Auto drivers, their spouse and two children are eligible for 10% concession on Tuititon fee for which they shall produce identity card issued by the competent authority.
- The University will issue the Identification Card to the candidates after the verification process is completed. Candidates are expected to keep the ID card till the completion of the programme. The candidates should produce the ID card during their academic-related work including examination.
- Candidates shall abide by the Rules and Regulations issued by the University from time to time.
- A Candidate who is found to have concealed information about his/her age qualification, etc., or violated any provisions, is liable to be removed from the rolls of the program concerned besides appropriate disciplinary action and imposition of penalty.
- All legal disputes will come under the jurisdiction of Mysuru City Courts only.
- Details about Gold medals and Cash prizes for meritorious candidates to various programmes is provided in **Annexure-V**.
- The details relating to general fee structure is provided in **Annexure VI**.
- Transgenders are eligibile for fee exempted admission
- **Any kind of ragging is strictly prohibited. For further details on Anti Ragging Policy visit official website [www.ksoumysuru.ac.in](http://www.ksoumysuru.ac.in)**
- Candidates enrolled for First Year BA/B.Com./B.Sc.(General)/B.Sc./BCA/BBA/BSW Programmes are eligible get admission renewal to second year even if he/she fails or not appeared for any or all the papers of First Year (subject to uploading of concerned year's/semester's IA & participated in the compulsory Contact Programmes & Practical examinations).

Likewise, He/ She is eligible to get admission renewal to Final year if he/she fails or not appeared for any or all the papers of First & Second year (subject to uploading of concerned years/semesters IA & participated in the compulsory Contact Programmes & Practical examinations).

### **(BSW & MSW)**

#### **WHY SOCIAL WORK AT KSOU?**

The Department of Studies in Social Work was started on 1<sup>st</sup> of September, 2023 in pursuance of its Mission of promoting ethical and moral transformation of Man and to produce professionally trained “Social Change Agents” who can take up the overall development of education for all as a challenge and can contribute purposefully and meaningfully.

The department offers opportunity to the students for the learning and development of social skills with knowledge of human behaviour. It helps the students to sharpen their talents and build capabilities to shoulder higher welfare and developments responsibilities through

supervised field work practicum. The overall emphasises is on development of professional competences among the students reinforcing their understanding and skills.

## **SCOPE OF COURSE**

Social Work is professional as well as job oriented course. Since the inception of the Social Work Education in India, the demand for the Professional Social Workers is increasing day by day. The trained Social Workers are having employment opportunities in the various fields such as Health Care, Family and Child Welfare, Rural Community Development, Correctional Services, Tribal Welfare, Youth Welfare, Human Rights, Disaster Management, Welfare of the Aged, Disables, Weaker Section, HIV/AIDS, Labour Welfare, Human Resource Management and Development, etc., such employment opportunities in the above mentioned fields are available with government organizations, NGOs, Industries, International Agencies like UNDP, WHO, UNICEF, ACTION AID, CARE, OXFAM etc.,. The globalization has created greater demand for the trained social workers in India as well in the other countries.

## **ABOUT THE DEPARTMENT**

The Department of Social Work is one of the seven departments of the School of Social Science started its journey in September 2023 with only one professor B. S. Gunjal. The department runs two year Master of Social Work (MSW) and three years Bachelor of Social Work (BSW). There are, total 500 students admitted at present (up to July 2024) in the department. The Master of Social Work course curriculum is generic contains broadly Family and Child Welfare, Medical and Psychiatric Social Work, Human Resource Management, Community Development and Correctional Social Work.

## **THE COURSE CONTENT AND STRUCTURE**

BSW and MSW courses are structured to impart comprehensive knowledge in the fields of Social Work. It consists of papers on Society, Social Problems, Human Growth and Behaviour, Methods of Social Work, and Field Work Practicum, Summer Placement, Rural Camp, Dissertation and Block Placement. In each paper, internal assessment tests for BSW course carry weightage of 30% marks and 70% marks are evaluated externally and field work practicum is for 100 marks out of which 30% marks will be for viva and 70% marks for the field work records. Basing on the reports the viva-voce examination will be conducted at the end of the semester. As far as MSW course is concerned 20% Internal Assessment 80% external assessment, field work practicum for all the semester is for 100 marks. Basing on the field work practicum reports viva-voce examination will be conducted under the Chairmanship of the department by inviting external examiners (approved panel of examiners).

## **Gudielines for Fee Re-imburement / Re-adjustment**

Students admitted to different academic programmes under special circumstances can get the fees reimbursed or adjusted to a different academic programmes subject to conditions (Standing order No: KSOU/Adm-1/10/2014-15/2016-17 dated: 16.11.2016), provided

1. Fee paid without having eligibility in a year can be adjusted towards the subsequent year in the event of the attaining eligibility.
2. Fee adjustment may be allowed though eligible at the time of payment of fee, but failure to produce necessary documents.

In spite of the above if the candidates is not willing to get the fee adjustment, the fee paid may be reimbursed subject to the conditions at paragraph no.6 on the the written request of the candidates.

3. Fee paid by a candidate under misconsumption of availability of particular course, ineligible the said fee maybe adjusted to other academic programmes on the request of the candidates.
4. Failure of Admission owing to the lapses of the University the full fee paid by the candidate if he wishes shall be considered for adjustment in the subsequent year.

5. If excess fee paid by the candidate may be adjusted to towards the admission fee in the subsequent year.
6. If the candidate is not agreeable to the above Sl.No.1 to 5 and he requests in writing to repay the fee, it may be permitted under the following conditions.
  - a. Amount paid towards processing fee, registration fee, eligibility fee, penal fee, examination fee, library fee, skill development training fee, alumni fee and other special fees are not subjected to repayment.
  - b. The concerned Head of the Department / Officer shall certify that Identification Card, Study Material and other document / information has not been provided to the candidate and if already provided the Head of the Department / Officer shall ensure that the same shall be returned by the candidate and certify the same.
  - c. The candidate shall enclose the original fee paid receipt along with the request.
  - d. 10% of the Tuition fee will be deducted for processing the repayment and the remaining Tuition fee will be repaid.

## 6. Programmes offered by the University (ODL Mode)

<b>A. Under Graduate Programmes:</b>			
<b>Sl. No</b>	<b>Name of the ODL Programmes</b>	<b>Duration</b>	<b>Scheme</b>
1	B.A	3 years	Annual
2	B.Com	3 years	Annual
3	B.LIB & I.Sc	1 year	Semester
4	B.Sc - General	3 years	Semester
5	B.Sc – Information Technology (Honours)	3 years	Semester
6	B.S.W- Bachelor of Social Work	3 years	Semester
7	B.B.A	3 years	Semester
8	B.C.A – Computer Applications	3 years	Semester
<b>B. Post-graduate Programmes</b>			
1	M.A – Kannada	2 Years	Semester
2	M.A – English	2 Years	Semester
3	M.A – Hindi	2 Years	Semester
4	M.A – Telugu	2 Years	Semester
5	MA-Urdu	2 Years	Semester
6	MA-Sanskrit	2 Years	Annual
7	M.A – History	2 Years	Semester
8	M.A – Economics	2 Years	Semester
9	M.A - Political Science	2 Years	Semester
10	M.A - Public Administration	2 Years	Semester
11	M.A – Sociology	2 Years	Semester
12	M.A - Journalism and Mass Communication	2 Years	Semester
13	M.A - Ancient History & Archeology	2 Years	Semester
14	M.S.W – Master of Social Work	2 Years	Semester
15	M.A - Education	2 Years	Semester
16	M.Lib & I.Sc	1 Year	Semester
17	M.Com	2 Years	Semester
18	MBA	2 Years	Semester
19	MCA- Master of Computer Application	2 Years	Semester
20	M.Sc. – Computer Science	2 Years	Semester
21	M.Sc. – Data Science	2 Years	Semester
22	M.Sc. – Chemistry	2 Years	Semester
23	M.Sc. – Environmental Science	2 Years	Semester

24	M.Sc. – Geography	2 Years	Semester
25	M.Sc. – Mathematics	2 Years	Semester
26	M.Sc. – Physics	2 Years	Semester
27	M.Sc. – Information Technology	2 Years	Semester
28	M.Sc - Botany	2 Years	Semester
29	M.Sc - Zoology	2 Years	Semester
30	M.Sc – Earth Science	2 Years	Semester
31	M.Sc – Life Science	2 Years	Semester
<b>C. P.G Certificate Programmes</b>			
1	PG Certificate in English (PGCDE)	1 year	Annual
2	PG Certificate in Communicative English (PGCCE)	1 year	Annual
3	PG Certificate in Human Resource Management (PGCHRM)	1 year	Annual
4	PG Certificate in Financial Management (PGCFM)	1 year	Annual
5	PG Certificate in Business Administration (PGCBA)	1 year	Annual
6	PG Certificate in Marketing Management (PGCMM)	1 year	Annual
7	PG Certificate in Journalism and Mass Communication (PGCJMC)	1 year	Annual
8	PG Certificate in Kuvempu Sahithya (PGCKS)	1 year	Annual
9	PG Certificate in Business Law (PGCBL)	1 year	Annual
10	PG Certificate in Information Technology (PGCIT)	1 year	Annual
11	PG Certificate in Computer Application (PGCCA)	1 year	Annual
12	PG Certificate Course in Ambedkar Studies (PGCAS)	1 year	Annual
13	PG Certificate Course in Linguistics (PGCL)	1 year	Annual
<b>D. Diploma Programmes (10+2 Based)</b>			
01	Diploma in Kannada (DIK)	1 year	Annual
02	Diploma in Journalism (DIJ)	1 year	Annual
03	Diploma in Information Technology (DIT)	1 year	Annual
04	Diploma in Computer Application (DCA)	1 year	Annual
05	Diploma in Early Childhood Care and Education(DECCE)	1 Year	Annual
06	Diploma in Translation Studies (DTS)	1 Year	Annual
07	Diploma in Predivtive Astrology (DPA)	1 Year	Annual
08	Diploma in Mundane Astrology (DMA)	1 Year	Annual
09	Diploma in Vastu Astrology (DVA)	1 Year	Annual
<b>E. Under Graduate Certificate Programmes</b>			
01	Under Graduate Certificate in Panchayath Raj (UGCPR)	6 months	Half yearly
02	Under Graduate Certificate Programme in Information Communication Technology (UGCICT)	6 months	Half yearly
03	Under Graduate Certificate in Translation Studies (UGCTS)	6 months	Half yearly
04	Under Graduate Certificate in Jyothir Vignan (UGCJV)	6 months	Half yearly
<b>Ph.D. Programmes (Regular Mode)</b>			
<b>Ph.D. in -</b> Kannada, English, Hindi, Telugu, History, Economics, Political Science, Sociology, Public Administration, Ancient History and Archeology, Journalism and Mass Communication, Commerce, Management, Library & Information Science, Education, Geography, Information Technology, Computer Science, Physics, Biochemistry, Biotechnology, Chemistry, Food Science & Nutrition, Environmental Science, Microbiology, Botany and Psychology.			
<b>Note:</b> The university issues admission notifications from time to time based on the availability of Ph.D seats in the above academic departments.			

## 7. Tentative Academic Planner BSW

The tentative academic planner for various programmes offered by the university is given as below:

### Annual Mode and Semester Mode Programmes – 2025-26 Jan Cycle

Sl. No	Academic Activities	Semester Mode (I <sup>st</sup> Semester )	Annual Mode (I <sup>st</sup> Year)
1	Admission Last Date	As per Admission Notification	
2	Distribution of SLM/e-SLM	Soft Copy Available in Digital Academic Platform portal	
3	Uploading Assignment Question in the Digital Academic Platform portal	During the period of Admission	
4	Online Induction Programme	March 2026	
5	PCP/ Counselling	March/April 2026	March/April 2026
6	Last Date of Submission of Assignment	April-2026	April 2026
7	Completion of Evaluation Assignments	May-2026	May 2026
8	Uploading of Assignments Marks to Exam Portal	May-2026	4 <sup>th</sup> week of November 2026
9	Examination Notification	June/July 2026	Nov/Dec 2026
10	Examination	July 2026	Jan 2027
11	Declaration of Result	August-2026	Feb/Mar 2027

## 8. Bachelor of Social Work (B.S.W)

<b>a. Duration</b>	3 Year (06 semesters)
<b>b. Eligibility for Admission</b>	Candidates who have passed the Two Year Pre-University examination conducted by the Pre-University Education Board in Karnataka State; <b>or</b> Any other examination considered as equivalent there to; <b>or</b> Candidates from other states who have successfully completed 12 years of schooling (either 10+2 or 11+1 or Higher Secondary Examination-12 Years of Schooling) excluding Nursery Education. <b>or</b> Pre University Examination in Vocational Courses conducted by the Department of Vocational Education, Government of Karnataka.
<b>c. Medium of Instruction</b>	English
<b>d. Credits</b>	185
<b>a. Duration</b>	3 Year (06 semesters)
<b>b. Eligibility for Admission</b>	Candidates who have passed the Two Year Pre-University examination conducted by the Pre-University Education Board in Karnataka State; <b>or</b> Any other examination considered as equivalent there to; <b>or</b> Candidates from other states who have successfully completed 12 years of schooling (either 10+2 or 11+1 or Higher Secondary Examination-

	12 Years of Schooling) excluding Nursery Education. <b>or</b> Pre University Examination in Vocational Courses conducted by the Department of Vocational Education, Government of Karnataka.
<b>c. Medium of Instruction</b>	English
<b>d. Credits</b>	185

### 8.1. Payment of Admission Fee for B.S.W

#### Admission Fee for B.S.W Programmes (in Rupees)

	I Year (I & II Sem)	II Year (III & IV Sem)	III Year (V & VI Sem)
Admission Processing Fee	1210	-	
Registration Fee	880	-	
Tuition Fee	10560	12870	12870
Skill Development Fee	715	715	715
Alumni Fee	550	-	-
Library Fee	275	275	275
<b>Total</b>	<b>14190/-</b>	<b>13860/-</b>	<b>13860/-</b>

#### ➤ Information about the admission fee

1. BPL Women candidates get 10% concession on tuition fee only.
2. Defence and ex-service man students get 10% concession on tuition fees in particular subject.
3. Cab/Auto drivers, their spouse and two children are eligible for 10% concession on Tuition fee for which they shall produce identity card issued by the competent authority.
4. The staffs of KSRTC / BMTC / KKRTC / NWKRTC get 10% discount on tuition fee for UG & PG Programmes.
5. KSOU staff members, their spouse and their children (only 2 children) get 10% concession on total admission fees in particular subject.
6. Full fee rebate for the childrens of the parents who died due to the Covid pandemic.
7. Transgender will get full fees concession.
8. As per the orders issued by the Government from time to time and in force, there will be full fee exemption for visually impaired candidates (above 50%) (except B.Ed and MBA).
9. Eligibility fee for candidates residing outside Karnataka or studied outside Karnataka is Rs 2200/-
10. Students who are eligible for more than one concession will be considered for the course with highest concession only.
11. Eligibility fee for direct admission / lateral entry to 2<sup>nd</sup> / 3<sup>rd</sup> Year UG / PG Programmes Rs.3,300/-
12. Alumni Fee Rs.550/-
13. Additional Processing fee for direct admissions Rs.550/-

**8A. For Direct Admissions to 2<sup>nd</sup>/3<sup>rd</sup> year BA/B.Com./B.Sc.(General)/B.Sc.– IT/B.C.A./BBA/ BSW Programmes:**

**I. For Second & Final Year B.A./B.Com Direct Admissions (Annual Mode) :**

1. Candidates seeking admission directly to Second Year B.A./ B.Com. programmes will have to study ICHR&ES of First Year in addition to 2<sup>nd</sup> year subjects compulsorily & pass the examination.
2. Likewise, Candidates seeking admission directly to Third Year B.A./B.Com. programmes will have to study ICHR&ES of First Year & FCA of second year in addition to 3<sup>rd</sup> year subjects compulsorily & pass the examinations.

**II. For Second Year B.Sc.(General)/B.Sc. – IT/BCA/BBA/BSW Programmes Direct Admissions (Semester Mode):**

Candidates seeking admission directly to Second Year B.Sc.(General)/B.Sc. – IT/B.C.A./BBA/BSW programmes will have to study **ICHR** of First semester & **Environmental Studies (ES)** of Second semester as AECC in addition to 2<sup>nd</sup> year (3<sup>rd</sup> & 4<sup>th</sup> Semester) subjects compulsorily & pass the examinations.

**III. For Final Year B.Sc.(General)/B.Sc.– IT/BCA/BBA/BSW Programmes Direct Admissions (Semester Mode):**

1. Candidates seeking admission directly to Third Year B.Sc.(General)/B.Sc. – IT/B.C.A./ BBA/ BSW programmes will have to study **ICHR** of First semester & **ES** of Second semester as AECC. **Addition to that;**
2. Study following additional subjects as Skill Enhancement Courses (SEC) of Third & Fourth Semesters;
  - i). **For B.Sc. (General) Students** – study 3<sup>rd</sup> semesters - Fundamentals of Computers & 4<sup>th</sup> semesters Computer Networking subjects.
  - ii). **For B.C.A. Students** – study 3<sup>rd</sup> semesters - Fundamentals of Accounting & 4<sup>th</sup> semesters Marketing Management subjects.
  - iii). **For B.S.W. / B.B.A. Students** – study 3<sup>rd</sup> semesters – Computer Applications & 4<sup>th</sup> semesters Personality Development subjects.
  - iv). **For B.Sc. – IT Students** – study 3<sup>rd</sup> semesters – R Programming & 4<sup>th</sup> semesters Tableau subjects.

## 8.2. Programme structure

The learners can choose any **two languages** of their choice.

**Languages offered** – Kannada, English, Hindi, Sanskrit, Urdu, Telugu

**Bachelor of Social Work (BSW)**  
(6 Semesters – Choice Based Credit System)

**Course Structure**

**I SEMESTER**

Papers	Type	Credits L:T:P	Examination Scheme		
			Theory/ Practical Max. Marks	I A Max Marks	Total Marks
Language –I	BSWCP-1	3:1:0=4	70	30	100
Language- II	BSWCP-2	3:1:0=4	70	30	100
Foundation Course	BSWCP-3	3:1:0=4	70	30	100
Introduction to Social Work	BSWDSC-1.1	3:1:0=4	70	30	100
Social Sciences for Social Workers – I (Economics and Sociology)	BSWDSC-1.2	3:1:0=4	70	30	100
Fields of Social Work <b>OR</b> Introduction to Family Life Education	BSWDSE-1.3(A) <b>OR</b> BSWDSE-1.3(B)	3:1:0=4	70	30	100
Social Work Practicum	BSWDSC-1.4	0:1:3=4	70	30 (Viva)	100
AMC 106/A	Indian Constitution and Human Rights (Compulsary)	0:1:1=2	-	-	-
Open Elective	Contemporary Social Problems, Issues and Concerns	0:1:1=2	40	10	50
<b>Total</b>		<b>32</b>	<b>Total Marks</b>		<b>750</b>

**II SEMESTER**

Papers	Type	Credits L:T:P	Examination Scheme		
			Theory/ Practical Max. Marks	I A Max Marks	Total Marks
English	BSWCP-4	3:1:0=4	70	30	100
II Language	BSWCP-5	3:1:0=4	70	30	100

Social Sciences for Social Workers – II (Political Science and Anthropology)	BSWDSC-2.1	3:1:0=4	70	30	100
Work With Individuals and Families	BSWDSC-2.2	3:1:0=4	70	30	100
Legal Information for Social Workers <b>OR</b> Prevention and treatment of Alcohol	BSWDSE -2.3(A) <b>OR</b> BSWDSE -2.3(B)	3:1:0=4	70	30	100
Social Work Practicum	BSWDSC-2.4	0:1:3=4	70	30 (Viva)	100
Social Reform Perspectives in Social Work	BSWDSC-2.5	3:1:0=4	70	30	100
Environmentl Science (Compulsary)	AECC-203	0:1:1=2	-	-	-
Social Legislations in India (Open Elective)	BECSWC-2	0:1:1=2	40	10	50
<b>Total</b>		<b>32</b>	<b>Total Marks</b>		<b>750</b>

### III SEMESTER

Papers	Type	Credits L:T:P	Examination Scheme		
			Theory/ Practical Max. Marks	I A Max Marks	Total Marks
English	BSWCP-6	3:1:0=4	70	30	100
II Language	BSWCP-7	3:1:0=4	70	30	100
Home Management	BSWDSC-3.1	3:1:0=4	70	30	100
Human Growth and Development	BSWDSC-3.2	3:1:0=4	70	30	100
Social Problems and Social Development	BSWDSC-3.3	3:1:0=4	70	30	100
Gandhian Philosophy of Social Workers <b>OR</b> Social Action for Social Change	BSWDSE-3.4(A) <b>OR</b> BSWDSE-3.4(B)	3:1:0=4	70	30	100
Social Work Practicum	BSWDSC-3.5	0:1:3=4	70	30 (Viva)	100

Skill Enhancement Course (Computer Application) Compulsary	SEC-1	O:1:1=2	-	-	-
<b>Total</b>		<b>32</b>	<b>Total Marks</b>		<b>750</b>

#### IV SEMESTER

Papers	Type	Credits L:T:P	Examination Scheme		
			Theory/ Practical Max. Marks	I A Max Marks	Total Marks
English	BSWCP-8	3:1:0=4	70	30	100
II Language	BSWCP-9	3:1:0=4	70	30	100
Non-Formal Education	BSWDSC-4.1	3:1:0=4	70	30	100
Work With Groups	BSWDSC-4.2	3:1:0=4	70	30	100
Work With Communities	BSWDSC-4.3	3:1:0=4	70	30	100
Administration of Social Welfare Organisations	BSWDSC-4.4	3:1:0=4	70	30	100
Social Work Practicum	BSWDSC-4.5	0:1:3=4	70	30 (Viva)	100
Personality Development	BBSEC-406	2	40	10	-
<b>Total</b>		<b>30</b>	<b>Total Marks</b>		<b>700</b>

#### V SEMESTER

Papers	Type	Credits L:T:P	Examination Scheme		
			Theory/ Practical Max. Marks	I A Max Marks	Total Marks
Social Work Research	BSWDSC-5.1	4:1:0=5	70	30	100
Social Work and Health Care	BSWDSC-5.2	4:1:0=5	70	30	100
Social Work with Tribal Communities	BSWDSC-5.3	4:1:0=5	70	30	100
Voluntary Action	BSWDSC-5.4	4:1:0=5	70	30	100
Communication and Counselling <b>OR</b> Case Studies	BSWDSE-5.5(A) <b>OR</b> BSWDSE-5.5(B)	4:1:0=5	70	30	100
Social Work Practicum	BSWDSC-5.6	0:1:3=5	70	30	100

<b>Total</b>	<b>30</b>	<b>Total Marks</b>	<b>600</b>
--------------	-----------	--------------------	------------

**VI SEMESTER**

Papers	Type	Credits L:T:P	Examination Scheme		
			Theory/ Practical Max. Marks	I A Max Marks	Total Marks
Social Work with Rural Communities	BSWDSC-6.1	4:1:0=5	70	30	100
Women's Empowerment	BSWDSC-6.2	4:1:0=5	70	30	100
Social Work with Urban Communities	BSWDSC-6.3	4:1:0=5	70	30	100
Population Dynamics and Family Welfare <b>OR</b> Disaster Management	BSWDSE-6.4(A) <b>OR</b> BSWDSE-6.4(B)	4:1:0=5	70	30	100
Social Work Practicum	BSWDSC-6.5	0:1:3=5	70	30	100
Block Field Work (Internship one month)	BSWDSC-6.6	0:1:3=5	70	30	100
Minor Research Project	BSWDSC-6.7	2:1:4=5	70	30	100
<b>Total</b>		<b>35</b>	<b>Total Marks</b>		<b>700</b>

### **THE DOMAIN OF FIELD WORK**

The goal oriented, planned and supervised field work is an integral part of BSW and MSW programmes. During the two year MSW and three year BSW, field work is intended to expose the students to a variety of professional situations of work with Individuals, Families, Groups and Communities. It includes Observational Visits, Concurrent Field Work in Agency or Open Community, Rural Camp and Block Placement. The students are given appropriate field work orientation before starting their field work practicum. They are also provided with field work guidelines, writing reports, face sheets etc.,

### **OBSERVATION/ORIENTATION VISITS**

When students are admitted in the department, they are taken to different human service organizations which include, Government Departments, NGOs/VOs, Autonomous Agencies, Industries, Hospitals etc., for 14 visits to different organizations. This helps to get them exposed with the functioning of various organizations and to understand the scope of Professional Social Work.

### **CONCURRENT FIELD WORK**

The students fulfil the requirement of 14 days concurrent field work and 14 Days Summer Placement visits (MSW second semester, in case of third and fourth semester 14 days concurrent field work) as per the direction given by the department. As far as BSW students field

work is for 5 days in each semester. Field work practicum is mandatory for both BSW and MSW courses as per the curriculum of Social Work.

### **RURAL CAMP**

The Rural Camp is organized for the students of MSW second semester for 05 days in a village (nearby Mysuru) which is mandatory as per the syllabus. The camp will be organized under the guidance of the Chairman of the department. The purpose of the camp is to get them oriented about rural life, their socio-economic conditions and to initiate some action programmes for awareness generation among the villagers. Students need to submit their camp experience report after the completion of the camp.

### **BLOCK PLACEMENT**

Having completed the examination of fourth semester MSW and sixth semester BSW students are expected to undertake Block Placement for 30 days in an agency assigned to them. The purpose is to provide them an opportunity to work independently for Social Work Practice on return from the Block Placement. Students need to submit report (within 10 days) which shall be certified by the agency supervisor.

The field work reports such as Observation Visits, Concurrent Field Work, Summer Placement, Rural Camp, Dissertation and Block Placement are evaluated by the external examiners at the time of viva-voce examination at the end of each semester theory exam. The performance of the all above mentioned field work practicum is examined through viva-voce committee comprised of Chairman of the department and external experts will be invited (who are in the list of approved panel of examiners). The expenditure towards field work practicum (Observation Visits, Concurrent Field Work, Summer Placement, Rural Camp, Dissertation and Block Placement) is borne by the students only.

### **DISSERTATION**

As part of the Social Work Curriculum dissertation is compulsory for all the students of Masters in Social Work which will be hard core paper (contains 100 marks) in the fourth semester. The students have to prepare synoptic note of the research proposal under the guidance of the faculty members of the department. The faculty members will assist the students to finalize the title of the research proposal, developing tools for data collection, pilot study, coding and de-coding, data analysis, interpretation of data and report writing. After completion of the dissertation, report has to be submitted in hard bound two copies to the department. The viva-voce examination will be conducted under the Chairmanship of the department by inviting external examiners (approved panel of examiners).

### **LIST OF FIELD WORK AGENCIES**

1. Women and Child Development Department
2. Alcohol and Drug De-addiction Centres
3. ICTC Counselling Centres
4. Family Planning Association of India
5. Family Counselling Centres
6. Marriage Counselling Bureaus
7. District Hospitals
8. Taluk Hospitals
9. Community Health Centres
10. Primary Health Centres
11. Grama Panchayath
12. Taluk Panchayath
13. Zilla Panchayath

14. Sarva Shiksha Abhiyan
15. Skill Development Centres
16. NGOs (Non-Governmental Organizations)
17. Shtree Shakthi & Self Help Groups
18. Old Age Homes
19. Orphan Homes
20. Mental Hospitals
21. Industries
22. Cancer Hospitals
23. Agricultural/Horticulture Department
24. Forest Department
25. Police Department
26. Garment Factories
27. Youth Clubs
28. Women Clubs
29. YMCA (Young Men Christian Association)
30. YMCA (Young Women Christian Association)
31. Scouts for Boys and Girls
32. School
33. Anganawadi
34. Certified Schools for Boys
35. Certified Schools for Girls
36. Juvenile Service Homes
37. Borstal School
38. Sub Jail
39. District Jail
40. Schools for blind

### **8.3. Instructional Delivery System**

The instructional methodology used in this University is different from that of conventional Universities. The Open University system is more learners oriented, and is geared to cater to the needs of motivated students assuming that the student is an active participant in the teaching-learning process. Instruction to student is imparted through various modes such as print, audio and supported by face to face communication during week-end counseling. The University follows multi-channel approach for instruction.

It comprises of proportionate combination of:

- Printed Self-Learning Material.
- Audio and limited visual
- Personal Contact programme

#### **Delivery system comprises proportionate combination of:**

- **Self-Learning Material (SLM):** The Study material prepared by highly experienced academicians/subject experts will be part of Instructional delivery. The study material is learner centric with illustrations, case studies, experience etc., and will help learners in acquiring knowledge and skill.

- **Personal Contact Programme (PCP):** The PCP will be arranged by the university at the notified center. Dedicated faculty will be pressed into action to render quality services.
- **Counseling:** The University will arrange counseling by way of face to face and electronic mode. The details relating to PCP and counseling will be uploaded to the University website at appropriate time.

### **F. Delivery of Self Learning Material**

The Study Materials has been designed keeping in view the norms prescribed by the UGC. Study Materials are divided into different blocks. The study material has been designed in the background of learners' assessment of study level. It is a primary source of information for pursuing various degrees. The study materials will be delivered at the time of admissions.

For the students who have not received the Study Material in person, the University will dispatch the same. If returned or undelivered to the addressee, the study material will be sent to such students later, on the condition that the student should bear the postal charges. Such addressees are updated in the KSOU website <http://ksoumysuru.ac.in>

In case the study materials are not available, the soft copy of the study materials will be available in the University's **Academic Platform App** students can make use of it.

The University has introduced a system of evaluation of self-learning material by the students. For this purpose a feedback form will be sent along with the self-learning material. Every learner shall submit the feedback on quality content of self-learning material as per the instructions and send it to concerned Regional Director or Dean (Study Centres) of the headquarters for further initiatives.

### **AUDIO-VIDEO STUDIO PROGRAMS**

"Our Karnataka State Open University has its own studio called Visual Studio, dedicated to providing a wide range of online and digital learning experiences for all its students. The aim is to transform all courses into an attractive visual medium, making learning both easy and appealing. Simultaneously, it turns studying into an entertaining task rather than a boring one, achieved through eye-catching visuals, soothing background music, enticing text styles, and a mind-inducing format.

For this purpose, the studio is equipped with advanced technology, including a large spacious Green matte floor, high-quality cameras, editing suites with top-of-the-line Apple systems, and all the necessary CG and Photoshop software. The studio is staffed by talented and creative individuals who operate and handle the cameras and software efficiently.

The KSOU Studio strives to produce excellent digital content daily, covering various subjects such as science, technology, management, arts, history, etc. All this content is available on our "KSOU DHRUSHYAVAHINI" YouTube channel. To date, the studio has produced around 500 pieces of content, all of which have been watched and appreciated by university students for their appealing quality.

In addition to course content, the studio makes an effort to communicate university seminars, programs, and events by capturing and uploading them to various digital platforms. Short videos of these programs are displayed on the university's signboards and other platforms to disseminate information rapidly.

As times change and trends evolve, education must also adapt its teaching methods and techniques. In this regard, our Karnataka State Open University's Visual Studio is a step ahead, consistently adopting new technologies effectively. This positions the university as strong and innovative in the field of education. The studio operates with its own vision, mission, ethics, and a strong work culture to reach its desired goals."

For more information, please contact Siddegowda B, Producer, Visual Studio Department. ph: 9945616423.

#### **8.4 Personal Contact Programme**

The University will arrange Personal Contact Programme (PCP) for B.SW. students. The PCP will be held in notified centres ..... The details relating to the duration, dates, and centres will be intimated to the students by circular or through website. Experienced faculty of the university and the academic counselors will deliver lectures on the syllabus. Further, the doubts on the SLM will be clarified besides offering proper advice on assignment writing and also examination. Students are advised to attend the programme and reap the benefits. During contact programme teacher's evaluation by students will be administered.

#### **8.5. Credit System**

The University follows the '**Credit system**' for all its Academic Programs. Each credit is of 30 hours of study comprising of all learning activities such as studying the self-learning material, participating in the counseling/contact classes, preparing assignment, visiting library/industry/institution, interacting through audio-visual related issues and preparing for exams. Thus, a four credit course involves 120 study hours, a six credit course involves 180 study hours and so on. This helps the students to understand the academic efforts she/ he has to put in order to successfully complete the course.

#### **8.6 Maximum period for Completion of Programme**

Normally the Candidate is expected to complete the program within the minimum period as laid down by the University for a Specific Program. However, a student who for whatever reasons is not able to complete the program within the normal or minimum duration prescribed for the program may be allowed a period of two years beyond the normal period to clear the backlog to be qualified for the degree. The general formula is  $N+2$  years ( $N$ =Normal / minimum duration prescribed for completion of the program). and will be revised from time to time as per the UGC norms.

#### **Credit System for the Programmes**

The University follows the '**Credit System**' for all its Programmes. Each credit is of 30 hours of study comprising of all learning activities such as studying the self-learning material, participating in the counseling/contact classes, preparing assignment, visiting library/ industry/ institution, interacting through audio-visual related mode and preparing for exams. Thus, a four credit course involves 120 study hours, a six credit course involves 180 study hours and so on. This helps the students to understand the academic efforts she/ he will have to put in order to successfully complete the programme.

### **9. CHOICE BASED CREDIT SYSTEM (CBCS)**

Choice based credit system (CBCS) is an internationally acknowledged system. Therefore the entire higher education in India is transforming itself to this uniform grading system. The CBCS provides an opportunity for the students to choose courses from the prescribed courses comprising core, elective/minor or skill based courses. The courses can be evaluated following the grading system, which is considered to be better than the conventional marks system. . This will benefit the students to move across institutions within India to begin with and across countries.

The uniform grading system will also enable potential employers in assessing the performance of the candidates. In order to bring uniformity in evaluation system and computation of the Cumulative Grade Point Average (CGPA) based on student's performance in examinations, the University Grants Commission has formulated the guidelines to be followed.

The choice based credit system not only offers opportunities and avenues to learn core subjects but also exploring additional avenues of learning beyond the core subjects for holistic development of an individual. The CBCS will undoubtedly facilitate us bench mark our courses with best international academic practices.

#### **Advantages of the choice based credit system:**

- Shift in focus from the teacher-centric to student-centric education.
- Student may undertake as many credits as they can cope with (without repeating all courses in a given semester if they fail in one/more courses).
- CBCS allows students to choose inter-disciplinary, intra-disciplinary courses, skill oriented papers (even from other disciplines according to their learning needs, interests and aptitude) and more flexibility for students).
- CBCS makes education broad-based and at par with global standards. One can take credits by combining unique combinations. For example, Physics with Economics, Microbiology with Chemistry or Environment Science etc. CBCS offers flexibility for students to study at different times and at different institutions to complete one course (ease mobility of students). Credits earned at one institution can be transferred.

#### **Outline of Choice Based Credit System:**

1. Core Course: A course, which should compulsorily be studied by a candidate as a core requirement is termed as a Core course.
  2. Elective Course: Generally a course which can be chosen from a pool of courses and which may be very specific or specialized or advanced or supportive to the discipline/subject of study or which provides an extended scope or which enables an exposure to some other discipline/subject/domain or nurtures the candidate's proficiency/skill is called an Elective Course.
    - 2.1 Discipline Specific Elective (DSE) Course: Elective courses may be offered by the main discipline/subject of study is referred to as Discipline Specific Elective.
    - 2.2 Dissertation/Project: An elective course designed to acquire special/advanced knowledge, such as supplement study/support study to a project work, and a candidate studies such a course on his own with an advisory support by a teacher/faculty member is called dissertation/project.
    - 2.3 Generic Elective (GE) Course: An elective course chosen generally from an unrelated discipline/subject, with an intention to seek exposure is called a Generic Elective.
- P.S.:** A core course offered in a discipline/subject may be treated as an elective by other discipline/subject and vice versa and such electives may also be referred to as Generic Elective.
3. Ability Enhancement Courses (AEC): The Ability Enhancement (AE) Courses may be of two kinds: Ability Enhancement Compulsory Courses (AECC) and Skill Enhancement Courses (SEC). "AECC" courses are the courses based upon the content that leads to Knowledge enhancement;
    - i. Environmental Science and
    - ii. English/MIL Communication. These are mandatory for all disciplines. SEC courses are value-based and/or skill-based and are aimed at providing hands-on-training, competencies, skills, etc.

3.1 Ability Enhancement Compulsory Courses (AECC): Environmental Science, English Communication/MIL Communication.

3.2 Skill Enhancement Courses (SEC): These courses may be chosen from a pool of courses designed to provide value-based and/or skill-based knowledge. □ Introducing Research Component in Under-Graduate Courses Project work/Dissertation is considered as a special course involving application of knowledge in solving / analyzing /exploring a real life situation/ difficult problem. A Project/Dissertation work would be of 6 credits. A Project/Dissertation work may be given in lieu of a discipline specific elective paper.

## 10. Evaluation

Evaluation system comprises of:

- i. Internal assessment (IA) through assignments with a weightage of 20 marks.
- ii. Term-end examination with a weightage of 80 marks.

### • Internal Assessment:

Internal Assessment by way of assignment is an integral part of open and distance learning. The main purpose of assignments is to test the students' comprehension of the learning materials acquired through the studies and to assess the performance of the student.

- Assignments should be submitted online through KSOU Academic Platform.
- Only soft copy of the assignments is accepted.
- Submission of Internal Assignment is compulsory

### About KSOU Academic Platform

#### 1. To download app to Mobile

Download

<https://play.google.com/store/apps/details?id=com.ksouonlinestudy.app.twa> and login with student mobile number given during admission followed by OTP.

#### 2. To Download app to Computer/Laptop /iOS Mobile

- Login to the website: [www.ksouonlinestudy.com](http://www.ksouonlinestudy.com) with student mobile number given during admission followed by OTP

#### 3. How to Submit Assignment through Online

- Click on **Assignments** tab in Dashboard
- Under **courses** page, click on respective **course names** to view assignment questions
- Click on assignment and upload the scanned copy of the hand-written assignment as a single pdf file.
- The contents in the uploaded assignment should have the following information
  1. Write the assignment in sheets with title of the course, your roll no, semester details.
  2. Mandatory Self Signature and date on all assignment pages.
  3. Scan the pages and make one single pdf file.
  4. Upload the pdf file.
  5. Click on **Submit the Assignment** and wait for the status.
  6. If assignment is rejected, Check Logs and Re-upload once.
  7. If the wrong file is uploaded, select the correct file and click "Update." The old file will be deleted, and the new one will be updated.

#### 4. Navigation Options:

In the top-right corner, access three key options:

- i) Notifications: Stay informed with circulars related to admission and examination.
- ii) Profile: View and update your name, semester, and email information.
- iii) Helpline Number: For updated information regarding changes to your registered number, subject, or course, please contact our helpline at **9873037405**. Feel free to reach out for assistance with any modifications or updates you may require.

#### 5. SLM Repository:

- Click on "Open Now" to access your subject list.
- You can access SLM, Video classes, Audio and Previous year Question paper

#### 6. Live Classes

- Receive notifications to join live classes, ensuring you stay connected with your coursework.
- Gain access to both live sessions and recorded classes for flexible learning options.

##### i. Active Classes:

- View your course timetable, listing subjects, semester/year, and class timings with date.
- Click on "Join" to access live classes; the link will redirect you to the GoogleMeet platform.

##### ii. Completed Classes:

- Access a log of completed classes, including the date and time.
- Recorded videos of completed classes are available for review directly within the app—no external viewer required.

##### • Term-end examination

The University will conduct term-end exam annually as per calendar of events. No provision for supplementary examination.

#### 11. Information about Examination –B.S.W

	<b>Marks</b>	<b>Minimum</b>
Internal Assessment	30	No
Term End Examination	70	32
Total	100	40
Course (Paper) exemption		40
Aggregate for pass		40%

##### • 11.1. Details of Examination Fee

<b>B.S.W</b>	<b>Fee</b>
Examination Fee (Per Sem)	2,200/-

## • 11.2. Procedure for Payment of Fee

- Candidate shall remit the prescribed fee online. The instruction to pay the fees online is available on the University website.
  - University will not accept cheque/cash/DD under any circumstances.
  - Filled in application can be submitted to respective Regional Centres/ headquarters along fees paid challan for admission.
1. In order to claim relaxation in the exam fees, the SC/ST students have to compulsorily pass the examination in the year of admission itself to pass. Exam Fee relaxation is not applicable for such candidates who do not appear for the exams in the year of admission.
  2. The SC/ST students admitted from a Course with the admission fee relaxation have to pay mandatorily Rs.50/- service charge. In case if they fail to pay the above mentioned amount, such applications will be rejected.
  3. The SC/ST students admitted with fees reimbursement during admission, have to compulsorily pay full exam fees.
  4. No fee relaxation in the exam fees for SC/ST students reappearing for the exams. Such students have to compulsorily pay the amount fixed for the exam fee by the University.
  5. University at any cost will not refund/ readjust the exam fees for future exams.

## • 11.3 Information relating to examination

### 12.3.1. Examination Policies

#### i. Annual Examination

The examination the programmes will be conducted by the University at the end of Academic Year. There is no supplementary examination for B.SW.and PG Programmes.

#### ii. Period for Completion of the Programme

The students shall complete the programme in a period of N+N years.

#### iii. Procedure of Examination

Candidate shall register for all subjects (whole examination) when he/she appears for the examination for the first time (during the year of admission).

#### iv. Examination Centres

Depending upon the number of students enrolled, the University will identify the Examination Centres. In addition to these Examination Centres, the University also conducts examination in other Institutions which will also be notified in the examination circular. If any changes are made regarding examination centres, the same will be updated in the KSOU official Website: [www.ksoumysuru.ac.in](http://www.ksoumysuru.ac.in). Supplementary examinations will have lesser number of examination centres depending on the strength of the students.

#### v. Course Exemption

Course exemption is granted to all Under Graduate and Post Graduate courses as per the ordinance of the University.

#### vi. Declaration of Results for Undergraduate Programmes

The candidates should score minimum 28 Marks and aggregate of 35 percent in all courses at the Term end examination. Those who score less than 35 per cent will be considered as failed in the examination. Therefore, candidates have to reappear for the courses in the examination.

## vii. Grace Policy

The grace marks permissible shall be 1% of total maximum marks of all the papers or Component or group or for the whole examination of all under graduate courses.

## viii. Grading System

Aggregate % of Marks Obtained	Qualitative Level Grade	Grade Class Label Awarded	
75 % or more	Excellent	A	Distinction
60-74%	Very Good	B	I Class
50-59%	Good	C	II Class
35-49%	Satisfactory	D	Pass
Below 35%	Fail	E	Fail

## ix. Revaluation and Photocopy of Answer scripts

The students of B.A/B.Com/B.SW/M.Lib.I.Sc/M.A/M.Com/M.Sc have provision to apply for re-valuation and photocopy of answer scripts within **14 days** from the date of announcement of result in the University Website ([www.ksoumysuru.ac.in](http://www.ksoumysuru.ac.in)). In this regard, application may be submitted to the **Registrar (Evaluation), Karnataka State Open University, Mukthagangothri, Mysuru-6**, through registered post or in person.

## x. Eligibility to appear for Examination

- To be eligible to appear for examination in any course, the students are required to fulfill the following conditions;
- They must have paid the all the fees prescribed by the University.
- They should have pursued the concerned course program.
- They should submit the examination form in time.
- Admission of candidate to the concerned programme should have been approved by the University.

## xi. Examination Time Table

Schedule of Examination indicating the date and time of Examination for each program will be sent to all the Regional Centres/Examination Centres within 15 days before the commencement of Examination. The students can obtain the detailed Time Table from their nearest Regional Centre or Examination Centre. They can also log on to [www.ksoumysuru.ac.in](http://www.ksoumysuru.ac.in) to download the Time Table. No individual intimation will be sent to the students regarding Examination Time Table.

## xii. Rank Declaration Rules

- Repeaters are not eligible for declaration of Rank.
- Those who have passed with grace marks for any paper or improved class (CIG) are not eligible for Ranks.
- The University will declare rank - 10% of total candidates appeared, subject to a maximum of 10 Ranks per programme.

## •12.4. Instructions to candidates related to examination

- The students shall read carefully the instructions contained in the Examination Notification.

- Students shall appear for the examination at the Examination Centre allocated to them and not at any other Centre without specific permission of the Registrar (Evaluation).
  - Examination Centre once opted shall not be changed. If students wish to change, they have to obtain the prior permission of Registrar (Evaluation) and they have to pay prescribed fee by submitting examination application form.
- **11.5 Announcement of Results:**
- Results will be announced in the University website ([www.ksoumysuru.ac.in](http://www.ksoumysuru.ac.in).)
  - Repeaters will have to obtain the examination application form from the University website.
  - Examination fee has to be paid online. Instruction for online fee payment is available on the university website. Once the fee is paid, it will not be refunded or adjusted for any examination even though a student is absent for a particular examination.
  - Students should obtain the admission ticket for the examination from the Chief Superintendent of the examination Centre three days before the commencement of the examination and it can also be downloaded from KSOU website. **Admission ticket will not be sent to the candidates by post.**
  - Candidate should apply to the **Registrar (Evaluation), KSOU, Mukthagangothri, Mysuru- 570 006**, in the prescribed form for migration certificate along with photo copy of all marks cards by paying the prescribed fee.
  - Provisional Pass Certificate will be issued by the Registrar (Evaluation) on request and on payment of prescribed fee, after the declaration of results and issue of final year marks card by the University.
  - All circulars, examination notifications and such other correspondences will be sent by ordinary post only. The candidate can also collect the above from Regional Center or Learner Support Center or KSOU Headquarters. The candidates are informed to visit University official website from time to time and get the updated information.
  - In case the Internal Assessment marks of any programme is not reflected in the result, inspite of submission of the assignment, such students shall contact the concerned coordinator along with the proof of submission within 30 days of announcement of result.
  - Students can write examination in Kannada or in English.

## **12. Student Support services**

The University has created learners friendly support services which enable the learners to pursue their studies without any inconvenience. The students support service is considered to be excellent in the headquarters; while proper measures have been taken up to provide such services at the Regional Centres/ Learners Support Centres.

### **Regional Centres and Learner's Support Centres**

The University is committed to cater to the academic requirements of the students. The KSOU has established Regional Centres across state to facilitate interactions between students and University on all aspects of academia.

KSOU functions through 3 tier system in providing Learner Support Centre:

- a. Headquarters
- b. Regional Centres
- c. Learner Support Centre (Study Centre).

The headquarters controls all the activities of Regional Centres and Learner Support Centres. The Regional Centres led by the Regional Directors, engage in admission process, issue of study material, besides organizing the counseling / PCP and also continuous assessment. The regional centres update all the information to the students from time to time, as and when university initiates. (The list of Regional Centres- **Appendix II**)

### **Library at Headquarters, Mysuru:**

The Karnataka State Open University Library has catered to the needs of the students, research scholars, faculty members, and non-teaching staff of the university since 1996. The primary mission of the library is to support the educational and research programmes of the university by maximising access to information. To fulfil the objectives of the university, the library aims to develop a comprehensive collection of documents useful for the faculty and the research community. Since then, there has been consistent growth in the multi-disciplinary resource collection of the library. At present, the library has in stock over 1,07,570 volumes on shelves covering a wide variety of subjects. Books on various subjects are procured as per the requirements of the staff and students. Realising the importance of the periodicals and their utility to research scholars and teachers, the university has subscribed to several periodicals. The library receives over 100 periodicals in print and online on various subjects. Apart from conventional book resources, it comprises a good number of reference books, encyclopaedias, reports, theses, dissertations, audio-visual materials, CD/DVDs, e-resources, etc.

### **Membership Services:**

- All the students of the university can become members of the library after getting their Student Identity Card issued by the university authorities at the time of admission.
- To get membership, they have to fill out a membership application and submit it along with two passport-size photos and one stamp-size photo, for a total of Photos for undergraduate and postgraduate students.
- Borrowers' tickets will be issued on payment of a refundable caution deposit of Rs. 250 for undergraduates and postgraduate students.
- Users can borrow one book per card. The issued books can be retained for 60 days, and after the due date, a penalty of Rs. 1 per book per day will be levied.
- The students should return the books and borrower cards 30 days before the commencement of the annual examinations. If they fail to return the same, the admission ticket for the examination will not be issued.
- As per university guidelines, students have to produce their identity card and compulsorily surrender their borrower tickets to the library authorities for obtaining a No Due Certificate (NDC) from the library.

### **Library Services:**

- Well-equipped and maintained library facilities are provided at the headquarters, regional centres, and learner support centres.
- Reference and Referral Services, Current Awareness Services, User Orientation Services, Bibliographic Services, News Paper Clipping Services, and Photocopy Services are provided to the users.

- The library has a well-equipped computer lab with an internet facility to cater to the needs of its users.
- The library functions from 10:00 a.m. to 5:30 p.m. on all working days.
- During contact programmes and university examinations, the library will be kept open from 8:00 a.m. to 8:00 p.m., and on government holidays, the library functions from 10:00 a.m. to 5:30 p.m.
- The housekeeping operations and catalogue are computerised using the NewGenLib integrated library management software.
- A web-based online public access catalogue is provided to users.
- The library website provides access to e-journals, e-books, old question papers, etc., and links to the Online Public Access Catalogue (OPAC) of the library [<http://ksoumysore.edu.in/library.php>].

Users can also access e-books and other resources from the remote access software called Knimbus: <https://ksoumysuru.knimbus.com/#/>. by logging in with your email ID and password (given by the library), or you can also access it by downloading and installing the mLibrary app from the Google Play Store on your mobile device.

For any information regarding the library services please send your queries and feedback to e-mail id: [ksoulibrary@gmail.com](mailto:ksoulibrary@gmail.com) and contact Telephone No. 0821-2500873 / 251995, Ext: 525/526/530/531.

### **Health Centre:**

The University has established a Health Centre to attend to the urgent and immediate health needs of the students whenever they stay at the campus. Only OPD facility is available and regular doctor and other staff will be on duty.

### **Hostels:**

The University has provided hostel facility both for men and women separately in KSOU Mysuru campus.

#### **Men's Hostel:**

KSOU Boys' Hostel is located in KSOU campus. It consists of 25 rooms. Each room can accommodate 5 students. In total 165 students can be accommodated at a time. Students who wish to avail this facility have to pay Rs.177/- (Rs.150/- +18% i.e Rs.27/- GST) per day including Tax.

#### **Women's' Hostel:**

KSOU cottages, located in the University campus, are reserved to women students. Totally 09 cottages are located in the University's main campus and can accommodate up to 108 students at a time. The student who wish to avail this benefit, have to pay Rs.177/- (Rs.150/- +18% i.e Rs.27/- GST) per day including Tax.

The University is extending this facility within its limits. The accommodation will be provided depending on the availability by following the policy of 'First Come-First Serve'. The students of the hostel/ cottages shall maintain decency and decorum in the campus, no damage to the properties of the University shall be caused. Any violation will attract disciplinary action and penalty. Those who do not get the accommodation shall make their own arrangements. To avail Hostel/ cottage facility and for the payment of tariff, contact the Office of the University Guest House during working hours. **For details contact- 9880561997 / 9845232585**

#### Other amenities available at the main campus

- Well maintained cafeteria
- State Bank of India with its ATM facility
- Post Office
- Wi-Fi Facility
- Well maintained play ground
- Pure drinking water facility

#### Special Concession for Women Students:

Women Candidates under the category of Below Poverty Line (BPL), seeking admission to UG/PG will be given 10% concession in the Tuition Fee. The applicant should submit the BPL card issued by the competent authority at the time of admission. Such candidates are required to enclose a copy of the BPL Card containing the photo and the name with self-attestation along with the application and original documents.

#### Mukta Sanjeevini Scholarship:

The University has established Mukta Sanjivini Scholarship Fund to encourage poor students to pursue their studies. This scholarship is available to students of economically weaker sections enrolled for B.A/B.Com, Programs in KSOU.

#### **Conditions:**

- Annual income of students/ father/ mother/ guardian/ husband shall not exceed Rupees One Lakh.
- Income/Caste certificate issued by concerned Tahsildar shall be submitted.
- Scholarship is available to II & III B.A./B.Com, students who have successfully completed their Previous Year examination with 50% marks in the first attempt.
- Students should be below the age of 30 years.
- Those who apply for this scholarship should not have applied for any scholarship anywhere else.
- Students will be selected for scholarship based on their merit.
- Students should submit prescribed filled in application form along with relevant documents to the **Deputy Registrar (Admissions), Karnataka State Open University, Mukthagangothri, Mysuru -570 006** within the stipulated time.

#### CMKKY

KSOU is a training partner to Chief Ministers Koushalya Karnataka Yojane (CMKKY). KSOU imparts training to all its Final year/ Semester students who have enrolled for various classes. For more details, students can contact Prof. Niranjan Raj.S Director CMKKY.

#### Competitive Examination Training Centre:

The KSOU Competitive examination training centre offers training and guidance to various competitive examinations. The Competitive Examination Coaching Centre is providing free coaching for aspirants of competitive exams. For more details, contact 821-2515944.

#### Vision and Goals

This is an ambitious experiment by KSOU CETC. The duty of universities does not end with awarding degrees. It is the duty of the university to impart quality training to the underprivileged at affordable cost and to place them in jobs.

A center born from the desire to share the light of knowledge to the hungry, to open the door of the world of knowledge to the deserving and to realize the dream.

The main aim of this center is to provide training and guidance spanning around 45 to 50 days for each batch to the aspirants who are preparing for competitive exams.

Prepare aspirants for competitive examinations such as IAS, KAS and other competitive examinations conducted by Central and State Government Public Service Commissions, FDA, SDA, Police Sub-Inspector, Police Constable competitive examinations and staff selection commission, coaching for UGC-NET and K-SET exams conducted by the University Grants Commission.

Our target is to prepare Kannada medium students especially candidates from rural background for competitive examinations.

The University has started Competitive Examination Training Center in the academic year 2011-12. Successful candidates for IAS, KAS, Bank Exams, NET, SLET, High School, Primary School Teacher Recruitment Exams Coaching, as well as spoken English related trainings, is a move to attract people of all ages.

In-service professors, serving state and central IAS and KAS officers and retired Chancellors of various universities have been interested in engaging as training resource persons for the competitive examinations held at this center.

### **13. Learning Welfare Centre**

Learners support services are the most vital component of the university. It includes wide range of academic, evaluation, extension and other related activities. The support services should not only be responsive to the needs of the distance learners but also proactive. Hence, the University established Learner Welfare Centre to explicitly address the needs and grievances of the learners besides advising and guiding the learners who come with prospective enquiry about the academic programmes. Learners' welfare shall be ensured by facilitating mechanisms like academic counselling, attending to queries, timely information, grievance-redressal and rewarding meritorious students. The University has created a better academic ambience for the learners who enjoy the academic experience which in turn enable them to be university ambassadors for its wellbeing. Following are the different forms of support extended to Learners:

1. Prospective Students Support
2. Existing Students Support
3. Alumni Students Support
4. Grievance Redressal Support

The centre is headed by the coordinator of the centre who is assisted by Assistant Registrar and other administrative staff. The Centre is entrusted with the responsibility of correspondence between the University Grants Commission, the University and Stakeholders. Following are the Students with grievances and seeking information about academic programmes offered by the University and other aspects are advised to call the helpline-**+91-8690544544** monitored by Learner Welfare Centre and also through e-mail: [ksoulwc@gmail.com](mailto:ksoulwc@gmail.com) and [contactus.ksou@gmail.com](mailto:contactus.ksou@gmail.com)

### **Alumni Association**

There is a registered Alumni Association that contributes significantly to the development of the institution through financial and or other support services

### **History:**

Karnataka State Open University Alumni Association (KSOUAA) was registered as an association under Karnataka societies registration act 1960 under the name Karnataka State Open University Alumni Association with Regn No:DRMY/SOR/82/2020-21 dated 23.07.2020.

### **The Objectives of KSOUAA are:**

Bring the old students of Karnataka State Open University, Mysuru under one forum for exchange of experience and dissemination of knowledge amongst its members and also for the furtherance of fellowship, advancement of knowledge in general of the members of the Association and the country in general.

- To conduct seminars, conferences, workshops, placement activities, endowment lectures and other academic activities and also to keep in touch with one another of the University faculty, administrators and students.
- To create and establish Alumni endowments for granting scholarships, prizes and medals to the students showing high proficiency in their studies and honour former students of the University.
- To advocate and contribute the cause of ODL with the Universities and Associations of other academic institutions relating to promotion of higher education, training and management systems and open learning thereby promote the welfare and status of the University.
- To collect funds by subscriptions, contributions, donations and gifts from members, non-members, Governments, Universities and other institutions and philanthropists for achievement of the above objectives.
- To render financial aid to deserving poor students studying at the University.
- To render financial aid to deserving alumni under the distressed situations.
- To publish Journals, magazines, souvenirs and newsletters with regards to the activities of the University and its Alumni.
- To organize cultural and educational programmes and also to conduct Alumni Day celebrations every year.
- To help the Alumni to get advice from the University on various technical problems they may come across in their official work and in real life and also with regard to job opportunities.
- To carry out such other activities as may be necessary for implementation of the above aims and objectives.

### **Prasaranga (Department of University Publications)**

**Prasaranga**, the publication wing of the Karnataka State Open University is a unique organization that was established in the year 2008 for the purpose of publications and extension activities. Till date, Prasaranga has published numerous books and research publications which are well received from academicians and students. In 2021, Prasaranga is registered with Raja Rammohun Roy National Agency to obtain ISBN series for future publications. Prof D.K Rajendra was the first Director (2008-2013), followed by Dr.Tejaswi Navilooru (2009-2020), and Dr.Santhosh Naik R (since 2020) is the present Director/coordinator.

#### **(A) Vision**

- To bring quality publications to enhance the knowledge universe.

- To encourage writers, authors and researchers to create valuable content in English and Kannada languages.

#### **(B) Mission**

The aim of any university is to create and share knowledge. A university publication wing is an essential part of the mission of sharing and promoting knowledge to a wider audience. We are focused towards quality publication which is not covered exhaustively by other publishers.

#### **(C) Future Plans**

- To bring an interdisciplinary journal with scholarly publication containing articles written by researchers, professors and other experts.
- Digitization of all books.
- Publishing textbooks in different subjects.
- Promoting young writers in Kannada with a special emphasis on writing books in area of Social Science, Science and Technology, Management and such other professional fields.
- To create an online platform for books
- Reprinting of all books that are of great value and in demand

#### **Note:**

- The University has prescribed fee structure for various programmes (see Annexure-V).

### **14. Other Information**

#### **• Change of Medium of Instruction**

There is provision for changing the medium of instruction the student had opted at the time of admission. The student should submit an application, addressed to **The Deputy Registrar (Admission)** along with fees challan of Rs.1,100/- remitted to SBI within one month, from the date of admission.

There is provision to obtain the study materials of their choice. Also there is a provision to return the study materials in the same condition as they were received. If the study materials returned are found unsuitable for distribution to other students, they will not be accepted by the study materials section.

#### **• Change of Address**

If the address given by the student at the time of admission is changed, he/she should write a letter about the change of address to **The Deputy Registrar (Admission), KSOU, Mysuru**. The student should confirm, from the concerned officer, whether the change of address has been entered in the Admission Register. It is very important as the study materials, information and application forms etc. dispatched to the students from time to time, can reach them only if the address given is correct.

#### **• Change of Name**

Students are required to submit the following documents to The Deputy Registrar (General) in order to change their names while pursuing their courses:

- a. Requisition letter for Change of Name.
- b. Photo Copy of the Judgment (Decree) from the court, containing the declaration of change of name.
- c. Two stamp size recent photographs

- d. Fee paid details of SBI
- e. Attested Photo copy of the SSLC Marks Card / Cumulative Record.
- f. Attested Photo copy of the PUC Marks Card.
- g. Attested Photo copy of the Student I.D. Card.
- h. Attested photo copy of Admission fees details
- i. Advertised copy of News Paper.

**The changed name will come into effect after University's Notification.**

- **Duplicate/ Renewal of Identity Card**

If the Original Identity Card is lost, students are required to pay fee of Rs.300/- remitted through SBI. The following records have to be submitted in order to obtain duplicate Identity Card:

- a. Student should write a letter to the Deputy Registrar (Admission), KSOU, Mysuru-6.
- b. A Photocopy of previous Identity card (if available), Attested copy of marks card, photo and attested photo proof of Aadhaar Card, office copy of the fee paid details should be enclosed.
- c. The University will issue the Identity Card to the students admitted for first year B.A / B.Com / B.Lib & I.Sc / M.Lib & I.Sc. / M.A / M.Com / M.Sc Degree Program. The students admitted to Second year/Final year of B.A/B.Com/ M.A/M.Com/M.Sc. Degree Program shall preserve the Identity Card and fee paid details of admission and examination.
- d. During the Examination, students shall invariably produce the Identity Card along with fee paid details of admission and examination to the invigilator. The University shall not be held responsible if students are denied permission to write the examination due to non-production of the above mentioned documents.

- **Letter Correspondence**

The students may contact **the concerned officer by phone/ e-mail/ letter** to get necessary clarification and information during their study period. On such occasions, students should mention their name, address, enrollment number, subject of study, medium of instruction and **Phone/ Mobile No.** without fail. This will help to solve the problems quickly. It is mandatory on the part of students to reply to the letters sent by the University on matters pertaining to admission, non-remittance of prescribed fee, study material, written assignments, exam, exam results etc. If students do not respond to the University's letters on time in matters mentioned above, the problems cannot be solved quickly for which the University will be not be held responsible. .

- **Issuing of Transfer Certificate**

Transfer Certificate will not be issued to students directly. It will be sent to the institutions where the students are pursuing his/her further studies. However, the students have to obtain No Due Certificate from the University before applying for Transfer Certificate. It will not be issued to the students other than education purpose.

Student has to submit the prescribed application form along with the prescribed fee along with the following documents to **The Deputy Registrar (Admission), Karnataka State Open University, Mukthagangothri, Mysuru-06.**

1. Student must fill the prescribed Application format and submit it along with prescribed fee paid challan of Rs.500/- and attested copies of S.S.L.C., and all the relevant degree marks cards of concerned program B.A/ B.Com/ B.SW/ M.Lib.I.Sc./ M.A/ M.Com/ M.Sc Degree Program Marks Cards and Identity Card.
2. T.C. will not be issued if there are any changes in the Name, Roll No., Class Declaration, Subjects etc., in the Marks Cards issued for the students by the University unless proper clarification is sought.

### ➤ **Skill Development Training**

The University is offering the Skill development training programmes to enhance the skills of the students as per the directions of Government of India, University Grants Commission and Karnataka State Skill Development Corporation. The Learners of **UG programmes** shall choose any of the subjects indicated hereunder.

The hands on experience will be provided at Headquarters/Regional Centres only. Well experienced trainers will impart skill to the learners at all the levels. The learners are informed to select the subjects carefully and indicate it in the application.

The course opted by the learner in the first year will be continued till they complete the programme. There is no provision for changing the subject under any circumstances. The university will not conduct examination on such courses. Participation in Skill Development training is compulsory.

The following skill areas have to be opted by students:

1. Computer Fundamentals
2. English for Communication and Soft Skills
3. ಆಡಳಿತ ಕೌಶಲ್ಯ
4. Employability Skill Enhancement

The hours of theory and practical are dependent upon duration of the course. The syllabi may be downloaded from the University website. The schedule of skill development training will be intimated in due course. The schedule and venue will be uploaded in KSOU website.

### ➤ **Competitive Examination Training Centre:**

The KSOU competitive examination training Centre offers training and guidance to various competitive examinations. The Competitive Examination Coaching Centre is providing free coaching for aspirants of competitive exams. For details contact 0821-2515944.

### **VISION AND GOALS**

This is an ambitious experiment by KSOU CETC. The duty of universities does not end with awarding degrees. It is the duty of the university to impart quality training to the underprivileged at affordable cost and to place them in jobs.

A center born from the desire to share the light of knowledge to the hungry, to open the door of the world of knowledge to the deserving and to realize the dream.

The main aim of this center is to provide training and guidance spanning around 45 to 50 days for each batch to the aspirants who are preparing for competitive exams.

Prepare aspirants for competitive examinations such as IAS, KAS and other competitive examinations conducted by Central and State Government Public Service Commissions, FDA, SDA, Police Sub-Inspector, Police Constable competitive examinations and staff selection commission, coaching for UGC-NET and K-SET exams conducted by the University Grants Commission.

Our target is to prepare Kannada medium students especially candidates from rural background for competitive examinations.

The University has started Competitive Examination Training Center in the academic year 2011-12. Successful candidates for IAS, KAS, Bank Exams, NET, SLET, High School, Primary School Teacher Recruitment Exams Coaching, as well as spoken English related trainings, is a move to attract people of all ages.

In-service professors, serving state and central IAS and KAS officers and retired Chancellors of various universities have been interested in engaging as training resource persons for the competitive examinations held at this center.

#### ➤ **Placement cell**

The University has a placement cell which provides placement assistance. Placement fairs are conducted by the University to provide placement assistance to students. The cell is having continuous liaison with different industry/companies. Placements are being provided to meritorious candidates.

Placement cell was started in July 2019 with the objective of providing jobs for meritorious candidates of KSOU exclusively. In later days the placement cell retained same objectives but the scope was extended all aspirants of Karnataka. With the above objective 4 job fairs including one mega job fair are arranged through which job were provided to 4000 students.

University has signed MoU with 2 companies for placements. Presently negotiations are going with Board of Apprentiship Training and Department of Employment and Training, Government of Karnataka. Around 50 students have been selected for apprenticeship with stipend of around 10,000 per month for 2 years. State level apprenticeship fair also arranged in collaboration of Government of Karnataka. The Placement cell planning to provide apprenticeship training with stipend of minimum 10,000/- per month for all Under Graduate and Post Graduate on SSLC based students. For more details contact placement cell: 9964697521.

#### **KSOU YouTube channel:**

The video recorded classes are available in KSOU official Youtube channel. @ksoudrushyavahini6222- KSOU DRUSHYAVAHINI. Hence the students are here by inform to subscribe to the channel without fail. In this channel the students will get all the notifications, news of KSOU.

#### ➤ **Video Lectures**

Few Departments have developed few video lectures which are uploaded in the YouTube Channel.

### ➤ **KSOU Radio**

Karnataka State Open University has launched KSOU Radio, an internet Radio for the benefit of all students, which can be heard by all students through the Mobile App. Through this radio, skilled professors, external resource persons are presenting lessons and supplementary materials to students.

As ours is an open university, we re-broadcast the 2-hour program over a 2 hour period, keeping track of all students' listening times.

The radio station was launched by the then Higher Education Minister of Karnataka Government Sri C N Ashwathanarayana on 07th April 2022. The radio has been continuously broadcasting ever since.

The Hon'ble Chancellor and other senior officials are providing all possible coordination and guidance for this radio broadcast.

Students can download this radio app from the KSOU official web site and listen to the lessons.

KSOU Radio is providing a lot of useful information and publications in addition to the curriculum.

It is gratifying that KSOU Radio has been instrumental in delivering lessons and extracurricular content to students in the space they are in, in a time when students are getting on with the fast pace of society

### ➤ **Centre for Internal Quality Assurance (CIQA):**

KSOU has established the Centre for Internal Quality Assurance (CIQA) as per UGC Open & Distance Learning Regulations 2017 to maintain quality in the services provided to the stakeholders and to assure that quality standards are maintained in all its academic and administrative activities. The committee for CIQA interacts with the stakeholders and initiates various measures to promote quality of services at every stage i.e. from the enrolment of students to till they accomplish their goals in their academic pursuit.

### ➤ **Research and Development Cell**

The Karnataka State Open University has *established Research and Development Cell* in the University to promote quality research and academic development. The cell is actively engaged in enhancing the research activities in the university. It provides academic support to the faculty members, research scholars and students of the university in writing articles and publishing them in Journals/ Conferences. Further, it also encourages the departments to conduct workshops, seminars and conferences.

**Planning, Monitoring and Evaluation Board Cell (PMEB):** The Karnataka State Open University has established planning, Monitoring and Evaluation Board (PMEB), PMEBC is an Administrative wing under the agency of CIQA of the Karnataka State Open University. It is established in 2022, mainly to check out academic planning & monitoring the research initiatives besides scholarship management PMEBC is furnishing all planning, Monitoring and evaluation of academic initiative programmes of the university

### ➤ **Information and Guidance Cell**

Relevant information on issues like programs offered by the University, admissions, study materials, contact program, examinations, results, marks cards, certificates, hostel facility etc. will be provided to the students who visit the University. **'Public Relation Officers'** will be present in the **'Information and Guidance Cell'** situated near the main entrance of the admission block. Students can contact them either in person or through phone and obtain required information. The contact numbers are **98453-63573** and Admission Block **94494-89749**.

➤ **Guidance and Counselling:**

The student career is a complex and sensitive. Students of the twenty first century are facing new challenges and difficult situations. Hence, it is vital to guide and counsel the learners in different areas while pursuing their academic programmes of the University. It may range from academic, skill development, career oriented, life skills, placement, Higher Studies, and others. The University has established full-fledged guidance and Counseling Cell to assist the students.

➤ **Bulk Message:**

The University has created a platform to send quick information to the candidates through bulk messages. The issue such as verification of documents, issue of ID Card, Counseling/ Contact Classes, Submission of assignments, Payment of examination fee, examination etc., will be communicated through bulk messages.

➤ **Interactive Platform:**

The University has earnestly initiated to utilize the advantages of information and technology development to meet the needs of learners. KSOU has developed a user-friendly and easy to navigate website which is very informative and students can access all relevant information from the regularly updated website. Besides, an Application (App.) called as *Academic Platform App.* has been developed which provides all necessary information to the students at the right time. This App. can be accessed through the cell phones. A well designed online interactive platform is developed for the delivery of online classes and other meetings. Virtual class rooms and laboratories have been created.

## **15. Convocation (Certificate/ Degree Certificate) (Refer KSOU website for convocation details)**

The University will conduct convocation after results of the respective programmes. Separate communication will also be sent to the students at an appropriate time.

## **16. Quality Initiatives**

In an endeavor to step up the quality of services rendered by the university, Centre for Internal Quality Assurance has been constituted as per the UGC order.

### **National Mission on Education through Information and Communication Technology (NMEICT).**

- The National Mission on Education through Information and Communication Technology (NMEICT) has been envisaged as a Centrally Sponsored Scheme to leverage the potential of ICT, in teaching and learning process for the benefit of all the learners in Higher Education Institutions in any time anywhere mode. This was expected to be a major intervention in enhancing the Gross Enrolment Ratio (GER) in Higher Education by 5 percentage points during the XI Five Year Plan period.
- The three cardinal principles of Education Policy are access, equity and quality which can be realized well by providing connectivity to all colleges and universities, by providing low cost and by affordable access-cum-computing devices to students and teachers and providing high quality e-content free of cost to all learners in the country. NMEICT encompasses all the three elements. The Mission has two major components:
  1. Providing connectivity, along with provision for access devices, to institutions and learners;
  2. Content generation.

It seeks to bridge the digital divide, i.e. the gap in the skills to use computing devices for the purpose of teaching and learning among urban and rural teachers/learners in Higher Education domain and empower those, who have hitherto remained untouched by the digital revolution and have not been able to join the mainstream of the knowledge economy. It plans to focus on appropriate pedagogy for e-learning, providing facility of performing experiments through virtual laboratories, on-line testing and certification, on-line availability of teachers to guide and mentor learners, utilization of available Education Satellite (EduSAT) and Direct to Home platforms, training and empowerment of teachers to effectively use the new method of teaching learning etc.

**Karnataka State Open University (KSOU)** has adopted National Mission on Education through Information and Communication Technology (NMEICT) a flagship initiative of Ministry of Human Resource Development, which aims to leverage the potential of Information and Communication Technology (ICT) in teaching and learning process by high quality, personalized and interactive knowledge modules over the internet for all the learners (EIs) in anytime, anywhere mode. The Karnataka State Open University has created separate cell for the NMEICT and Virtual Labs. Adopted ICT initiatives of are as follows:

- a. SWAYAM: Massive Open Online Courses
- b. SWAYAMPRAKHA: View digital courses on TV
- c. National Digital Library: e-content
- d. e-PG Pathshala: Gateway for e-books upto PG
- e. Shodhganga: A reservoir of Indian Theses
- f. e-ShodhSindhu: e-journals
- g. e-Yantra: Engineering for better tomorrow
- h. FOSSEE: Free/Libre and Open Source Software for Education
- i. Virtual Labs: Web-enabled experiments designed for remote – operation
- j. University Enterprise Resource Planning (SAMARTH)
- k. VIDWAN: Expert Database and National Research Network
- l. IRINS: Indian Research Information Network System
- m. Shodh Shudhhi (PDS): Plagiarism Detection Software

## **17. Digital Initiatives for Higher Education – UGC**

### **SWAYAMPRAKHA:**

SWAYAM Prakha is an initiative of the Ministry of Human Resources Development to provide 32 High Quality Educational Channels through DTH (Direct to Home) across the length and breadth of the country on 24X7 basis. It has curriculum-based course content covering diverse disciplines. This is primarily aimed at making quality learning resources accessible to remote areas where internet availability is still a challenge. The DTH channels are using the GSAT-15 satellite for programme telecasts. Karnataka State Open University has provided Opportunity to access relevant channels in the Cauvery Auditorium for the benefits of learners during their stay in the personal Contact Programme.

### **VIRTUAL LABS:**

Virtual Labs will provide the students the result of an experiment by one of the following methods (or possibly a combination). Modelling the physical phenomenon by a set of equations and carrying out simulations to yield the result of the particular experiment. This can, at-the-best, provide an approximate version of the ‘real-world’ experiment. Providing measured data for virtual lab experiments corresponding to the data previously obtained by measurements on an actual system. Remotely triggering an experiment in an actual lab and providing the student the

result of the experiment through the computer interface. This would entail carrying out the actual lab experiment remotely. Virtual Labs will be made more effective and realistic by providing additional inputs to the students like accompanying audio and video streaming of an actual lab experiment and equipment. For the ‘touch and feel’ part, students can possibly visit an actual laboratory for a short duration.

**Karnataka State Open University** has been recognised as Nodal Centre for Virtual Labs under the leadership of National Institute of Technology, Surathkal. The University has established well equipped Virtual Labs at Science Bhavan which can cater to the needs of KSOU learners in accessing the experiments developed by NITK.

#### **CONTENT DEVELOPMENT:**

The UGC e-Content scheme aims at developing high quality e-Content, as well as expertise for generating such content over the long term. The scheme provides financial assistance and technical support to teachers and other experts based in colleges and universities for the development of e-Content. The e-Content development and the associated web based learning described here do not seek to replace traditional teaching and learning, but are expected to supplement them. The inclusion of e-Content in learning is now inevitable, and the UGC initiative is, hence, designed to meet the new challenges, and to help India take the lead in this newly emerging field. The **Karnataka State Open University** has initiated development of e content proposal under the NMEICT

#### **SWAYAM**

The University will launch a few programmes online as per the directives of UGC / MHRD. For this purpose University has procured DD Free Dish and installed for accessing SWAYAM Prabha Channels. These channels will be used by the teachers while teaching the courses to have a blended learning process mainly to improve the quality of learning.

#### **Digital Monitoring Cell**

University has established “Digital Monitoring Cell” to review the current use of digital resources and also periodical suggestions will be given to enhance their utilization further.

#### **National Academic Depository Cell**

National Academic Depository (NAD) is an online store house of academic awards (degrees, diplomas, mark sheets etc.,) lodged by the boards/ academic institutions/ eligibility assessment bodies in a digital format that has been launched on 9<sup>th</sup> July, 2017 by Hon’ble President of India. It is a 24x7 online mode for making available academic awards and helps in validating its authenticity, safe storage and easy retrieval. University has established NAD cell to carry out the activities in this regard. Students shall register to the NAD.

#### **National Digital Library**

The National Digital library of India (NDL) is a project under Ministry of Human Resource Development, India. The objective is to integrate several national and international digital libraries in one single web-portal. The NDL provides free access to many books in English and the Indian languages. Hence, students are advised to join National Digital Library at <https://ndl.iitkgp.ac.in/> to access more than 80 lakh digital resources without any cost.

#### **Massive Open Online Courses (MOOCs)**

The University Grants Commission, under the ambit of MHRD, has facilitated the Open Universities to conduct short term programme online. The candidates may visit the website of KSOU/ UGC to avail the benefits of such MOOCs

# National Academic Depository (NAD)

## WHAT IS NAD?

The vision of National Academic Depository (NAD) is born out of an initiative to provide an online store house of all academic awards. National Academic Depository (NAD) is a 24X7 online store house of all academic awards viz. certificates, diplomas, degrees, mark-sheets etc. duly digitised and lodged by academic institutions / boards / eligibility assessment bodies. NAD not only ensures easy access to and retrieval of an academic award but also validates and guarantees its authenticity and safe storage.

## How to register on NAD?

The users of the NAD system are free to select DigiLocker as a sole depository for NAD. (The users should select DigiLocker as the preferred depository for register into NAD. The user may click on the link <https://nad.digitallocker.gov.in> which shall re-direct them to the depository's website. Further details relating to the registration process is available on the website.)

### Step 1: Login to DigiLocker:

The image displays three sequential screenshots of the DigiLocker user interface. The first screenshot shows the 'Sign In to your account!' page with a 'Mobile/Aadhaar' button and a 'Username' field. The second screenshot shows the 'Verify OTP' page where a user enters an OTP received on their mobile. The third screenshot shows the 'Creating account is fast and easy!' page with fields for Full Name, Date of Birth, Mobile Number, Security PIN, and Email ID.

First of all, login to your DigiLocker Account. If you have not sign up in DigiLocker, create it now and then login there (You can visit [www.nad.gov.in](http://www.nad.gov.in) or [nad.digitallocker.gov.in](http://nad.digitallocker.gov.in) and then click Student on the menu bar. The page gets redirected to the student page and then register themselves by using their Aadhaar ID or Mobile Number)

A Separate cell has been created in KSOU. Dr Shalvapille Iyengar is the Co-ordinator of NAD/ABC cell and His Phone Number: 09686215043 While Creating DigiLocker or ABC account contact Technical Staff if you find any difficulties feel free to contact. The Technical Assistants are

- 1) Mallesh M – 08105261434

## **What is ABC?**

"Academic Bank of Credits" means an academic service mechanism as a digital/virtual/online entity established by University Grants Commission to facilitate students to become its academic accounts holder, thereby paving the way for seamless students' mobility between or within degree granting HEIs through a formal systems of credit recognition, credit accumulation, credit transfer and credit redemption to promote distributed and flexible teaching learning.

## **How to Create ABC ID?**

It is mandatory to create an account on ABC platform and generate ABC ID for University Admission in 2023.

### **Follow these simple steps to create your ABC ID from official site:**

#### **Step 1: Login to DigiLocker:**

First of all, login to your DigiLocker Account. If you have not sign up in DigiLocker, create it now and then login there (You can visit [www.nad.gov.in](http://www.nad.gov.in) or [nad.digitallocker.gov.in](http://nad.digitallocker.gov.in) and then click Student on the menu bar. The page gets redirected to the student page and then register themselves by using their Aadhaar ID or Mobile Number)

#### **Step 2: Search for Education:**

After login, you search for Education category which shows Academic Bank of Credits service.

#### **Step 3: Create ABC ID:**

Finally, select your University and click on Generate ABC ID.  
**Read here: <https://www.aubsp.com/abc-id/> for more detail.**

A Separate cell has been created in KSOU. Dr Shalvaville Iyengar is the Co-ordinator of NAD/ABC cell and His Phone Number: 09686215043

While Creating Digilocker or ABC account contact Technical Staff if you find any difficulties feel free to contact. The Technical Assistants are

- 1) Mallesh M – 08105261434

**K.S.O.U REGIONAL CENTERS : 2025-26**

**Annexure-I**

SLNo	Place	Address of the Regional Centre with Telephone Numbers, Regional Director, Contact Number and Email ID	SLNo	Place	Address of the Regional Centre with Telephone Numbers, Regional Director, Contact Number and Email ID
1	Ballary	<b>Dr.H. Mallikarjuna</b> <b>Regional Director (Graded Pay)</b> Mob : 7892597159 E-Mail ID : <a href="mailto:blyrcksou@gmail.com">blyrcksou@gmail.com</a> KSOU Regional Centre, Behind Regional Science Centre Near District Stadium, Nellacheravu Pradesha, Ballary-583 102.	2	Bagalakote	<b>Sri Arun K.S</b> <b>Regional Director (Temporary)</b> Mob : 7022222241/ 8861040975 E-Mail ID : <a href="mailto:rdksoubgk22@gmail.com">rdksoubgk22@gmail.com</a> KSOU Regional Centre, BVVS Jana Shik, Sahana Samsthe Campus, Beside Basaweshwara Independent PU College, Vidyagiri, Bagalkote 581703.
3	Bangalore-1 (Bapujinagara)	<b>Sri H.S.Rohith</b> <b>Regional Director (Graded Pay)</b> Mob: 98805-26439/90195-26439 E-Mail ID : <a href="mailto:rdksourcbng01@gmail.com">rdksourcbng01@gmail.com</a> KSOU Regional Centre, First Stairs, Satellite Bus Stand, Mysore Road, Bapujinagar, Bangalore -560026. Ph : (O) 080-26603664,	4	Bangalore -2 (Malleshwaram)	<b>Smt. J Shashikala.</b> <b>Regional Director (Temporary)</b> Mob: 97411-97921/94835-17160 E-Mail ID : <a href="mailto:rdwrcksou@gmail.com">rdwrcksou@gmail.com</a> KSOU Women's Regional Centre Govt. PU College for Girls, 13 <sup>th</sup> Cross, 4 <sup>th</sup> Main, Malleshwaram, Bangalore -560003. Ph : (O) 080-23448811
5	Bangalore -3 (Yalahanka)	<b>Dr. Sudhakar</b> <b>Regional Director (Graded Pay)</b> Mob: 9008540090 E-Mail ID : <a href="mailto:ksourcbangalore@gmail.com">ksourcbangalore@gmail.com</a> K.S.O.U. Regional Centre Oxford Educational Trust, Srinivasapura, Kogilu Main road, Yalahanka Bangalore – 560 064.	6	Bangalore -4 (Madiwala)	<b>Dr. Manjunatha S.J</b> <b>Regional Director (Graded Pay)</b> Mob : 080-23158888 / 86188-21417 E-Mail ID : <a href="mailto:rdksourcbng04@gmail.com">rdksourcbng04@gmail.com</a> K.S.O.U. Regional Centre No. 121, 2 <sup>nd</sup> floor, Madiwala, Madiwala Traffic Police Station beside, Near Happiest mind, Hosur main road, Bangalore-560068.
7	Bangalore-05 (K.R Puram)	<b>Smt. Sumalatha M.C</b> <b>Regional Director (Temporary)</b> Mob : 87227-88788 E-Mail ID : <a href="mailto:ksourcbngkrpuram5@gmail.com">ksourcbngkrpuram5@gmail.com</a> KSOU Regional Centre Government First Grade College, K.R Puram Bangalore-560036.	8	Bangalore-06 (Sunkadakatte)	<b>Smt. Shruthi P.R</b> <b>Regional Director (Temporary)</b> Mob : 84534-58238 / 9844556968 E-Mail ID : <a href="mailto:ksoubengalururc06@gmail.com">ksoubengalururc06@gmail.com</a> KSOU Regional Centre Sri Lakshmi College of Management and Science. # 4&5, Sri Gandakaval, Magadi main road, Sunkadakatte, Bangalore-560091.
9	Belagavi	<b>Sri Amruth M Naidu</b> <b>Regional Director (Temporary)</b> Mob : 96634-51169 E-Mail ID : <a href="mailto:rdksoubelagavi@gmail.com">rdksoubelagavi@gmail.com</a> KSOU Regional Centre Kranthiveera Sangolli Rayanna Mahavidyalaya premises, Neharu Nagar, Belagavi-590 010.	10	Bidar	<b>Sri Nagesh. M</b> <b>Regional Director (Temporary)</b> Mob : 99866-96487 Ph: (O) 08482-232020. E-Mail ID : <a href="mailto:rdksoubidar@gmail.com">rdksoubidar@gmail.com</a> KSOU Regional Centre Government First Grade College, Naubad, Bidar-585402.
11	Bidar-02	<b>Sri Nagesh. M (Incharge)</b> <b>Regional Director (Temporary)</b> Mob : 99866-96487. E-Mail id: <a href="mailto:rdksoubidar@gmail.com">rdksoubidar@gmail.com</a> KSOU Regional Centre Karnataka Public School, Gorata B grama, Halasura Tq, Bidar Dist.	12	Chamarajanagar	<b>Dr. Shekar H.S</b> <b>Regional Director (Temporary)</b> Mob: 99803-02686 E-Mail ID : <a href="mailto:ksourcchnagara@gmail.com">ksourcchnagara@gmail.com</a> KSOU Regional Centre K.H.B. Colony, Ramasamudhra Layout, Near Emmanuel Cristian Public School, Chamarajanagar-571342.
13	Chikmagalur	<b>Sri Gurudath K.P</b> <b>Regional Director (Temporary)</b> Mob : 80887-16236 E-Mail ID : <a href="mailto:ckmrcksou@gmail.com">ckmrcksou@gmail.com</a> KSOU Regional Centre Sai Mandira Road, Madhavana Layout, Chikmagalur-577 102.	14	Chikkaballapura	<b>Sri Suresh H</b> <b>Regional Director (Temporary)</b> Mob : 91643-00299 E-Mail ID : <a href="mailto:ksourcckblpura@gmail.com">ksourcckblpura@gmail.com</a> KSOU Regional Centre Government First Grade (Municipal) College M.G Road, Chikkaballapura-562101.
15	Chitradurga	<b>Smt. Radhika B.R</b> <b>Regional Director (Temporary)</b> Mob : 74066-12788 E-Mail ID : <a href="mailto:rdksouchitradurga@gmail.com">rdksouchitradurga@gmail.com</a> KSOU Regional Centre, Don Bosco degree college, near BCM hostel, Shanmathma temple road, Chelekare road, Chitradurga, Karnataka 577501	16	Davanagere	<b>Dr. Vijayprakash</b> <b>Regional Director (Graded Pay)</b> Mob: 99864-58055 E-Mail ID : <a href="mailto:rdksoudavangere@gmail.com">rdksoudavangere@gmail.com</a> KSOU Regional Centre J.H Patel Layout, Behind Shamanur, Naganur Road, Davanagere - 577 004

17	Dharwad	<b>Sri Raghavendra Kulkarni</b> <b>Regional Director (Temporary)</b> <b>Mob: 9916894944. Ph : (O) 0836-2441199</b> <b>E-Mail ID <a href="mailto:Regionaldirectorkoudwd@Gmail.Com">Regionaldirectorkoudwd@Gmail.Com</a></b> Ksou Regional Centre Amaragola 2 <sup>nd</sup> Stage, near Judge colony, last bus stop, Navanagara, Hubli-580025.	18	Gadag	<b>Sri Siddarth B.N</b> <b>Regional Director (Temporary)</b> <b>Mob : 86189-29376 / 8884231002</b> <b>E-Mail ID : <a href="mailto:ksougdgrd@gmail.com">ksougdgrd@gmail.com</a></b> KSOU Regional Centre, Near Dr. Pandith Puttaraj Kavi Gawai's Private Industrial training Institute, L.L building Next to Mahendra Service Station General K.M Karyappa circle(Old D.C Office Circle), Gadag-582101.
19	Haveri	<b>Sri Satish M Patil</b> <b>Regional Director (Temporary)</b> <b>Mob : 97432-76734</b> <b>E-Mail ID : <a href="mailto:satishmpatil88@gmail.com">satishmpatil88@gmail.com</a></b> KSOU Regional Centre Shri Shivalingeshwara Vidyapeeta, Hukkerimata, Haveri-581110.	20	Hassan	<b>Dr.P.Jagadeesh</b> <b>Regional Director (Graded Pay)</b> <b>Mob: 81978-18807 / 9482603060</b> <b>E-Mail ID : <a href="mailto:hassanrksou@gmail.com">hassanrksou@gmail.com</a></b> KSOU Regional Centre S.M.Krishna Nagar, Arasikere Road, Doddapura (Post), Hassan-5731118.
21	Kalaburgi	<b>Dr. Sangamesh Hiremath</b> <b>Regional Director (Graded Pay)</b> <b>Mob: 99167-83555</b> <b>E-Mail ID : <a href="mailto:ksourckalaburagi@gmail.com">ksourckalaburagi@gmail.com</a></b> KSOU Regional Centre Institute of Kannada Studies, Gulbarga University Campus, Kalaburgi-585106.	22	Karwar	<b>Raghavendra Kulkarni(Incharge)</b> <b>Regional Director (Temporary)</b> <b>Mob: 9916894944</b> <b>E-Mail ID : <a href="mailto:karwarksource@gmail.com">karwarksource@gmail.com</a></b> KSOU Regional Centre 1 <sup>st</sup> Floor, Old U.S.K.V. Building, Savitha Circle Main Road, Karwar-581301.
23	Kolar	<b>Dr.Gopal P</b> <b>Regional Director (Graded Pay)</b> <b>Mob : 89702-23247</b> <b>E-Mail ID : <a href="mailto:kolarrc@gmail.com">kolarrc@gmail.com</a></b> KSOU Regional Centre Behind S.P. Office, Near R.L.Jalappa Hospital, Kolar-563101.	24	Kollegala	<b>Smt. Dhanalakshmi.N</b> <b>Regional Director (Temporary)</b> <b>Mob : 99807-40048</b> <b>E-Mail ID : <a href="mailto:rcmmhillsksou77@gmail.com">rcmmhillsksou77@gmail.com</a></b> KSOU Regional Centre Haricharan orchard, 2 <sup>nd</sup> floor, south extension, opp Mahadeshwara Kalyana mantapa, Kollegala taluk, Kollegala-571440.
25	Koppala	<b>Sri Sandesh K.S</b> <b>Regional Director (Temporary)</b> <b>Mob : 90085-88675 / 8722588675</b> <b>E-Mail ID : <a href="mailto:ksou.koppala@gmail.com">ksou.koppala@gmail.com</a></b> KSOU Regional Centre, Urban development authority building first floor, Opposite to Govanakoppa hospital Hospete road Koppala-583231.	26	Madikeri	<b>Smt. Smitha A.B.</b> <b>Regional Director (Temporary)</b> <b>Mob : 8073342310</b> <b>E-Mail ID : <a href="mailto:ksoumadikeri23@gmail.com">ksoumadikeri23@gmail.com</a></b> KSOU Regional Centre Junior College Campus, Field Marshal Kariappa Multipurpose indoor stadium Madikeri-571201.
27	Mandya	<b>Smt. Milana R</b> <b>Regional Director (Temporary)</b> <b>Mob: 97419-90284</b> <b>E-Mail ID : <a href="mailto:ksoumandvarc07@gmail.com">ksoumandvarc07@gmail.com</a></b> KSOU Regional Centre #11 A 'E' Block, Vivekananda Nagar extension Kereangala, Opp Santhemala Melukote Road, Mandya-571402.	28	Mangaluru	<b>Dr. Basavaraju.B</b> <b>Regional Director (Graded Pay)</b> <b>M: 99450-58950 / 9972196692</b> <b>E-Mail ID : <a href="mailto:drbasavarajuksou2@gmail.com">drbasavarajuksou2@gmail.com</a></b> KSOU Regional Centre Custom quattras opposite, 4 <sup>th</sup> cross Dattanagar, Mangalore-575016.
29	Periyapatna	<b>Sri Arun Kumar</b> <b>Regional Director (Temporary)</b> <b>M: 99014-23273</b> <b>E-Mail ID : <a href="mailto:ksourcppetna@gmail.com">ksourcppetna@gmail.com</a></b> KSOU Regional Centre D.P.B.S Government PU College, Boys High School section Campus, near B.M Road Bettadapura circle Periyapatna Tq, Mysore-571107.	30	Ramanagara	<b>Sri Girish H.N</b> <b>Regional Director (Graded Pay)</b> <b>Mob: 9448668880</b> <b>E-Mail ID : <a href="mailto:rd.ksourc.ramanagar@gmail.com">rd.ksourc.ramanagar@gmail.com</a></b> KSOU Regional Centre Chamundeshwari Educational Trust (R), Shatiniketan Group of Institutions, B.M. Road, Vivekanandanagar, Ramanagara-562159.
31	Raichur	<b>Sri Prakash K.P</b> <b>Regional Director (Temporary)</b> <b>Mob : 96866-19555</b> <b>E-Mail ID : <a href="mailto:prakabeema@gmail.com">prakabeema@gmail.com</a></b> KSOU Regional Centre Government First Grade College, Nijalingappa colony, near Valmiki circle Lingasur road, Raichur-584101.	32	Shivamogga	<b>Sri. Sridhar.M</b> <b>Regional Director (Graded Pay)</b> <b>Mob : 9964274173</b> <b>E-Mail ID : <a href="mailto:ksousmg14@gmail.com">ksousmg14@gmail.com</a></b> KSOU Regional Centre Alkola Circle, Near LIC Office, Sagara Road, Shivamogga-577201.
33	Tumkuru	<b>Dr. Lokesh. R</b> <b>Regional Director (Graded Pay)</b> <b>Mob : 98445-06629 Office No: 0816-2955580</b> <b>E-Mail ID : <a href="mailto:ksourctumkur06@gmail.com">ksourctumkur06@gmail.com</a></b> KSOU Regional Centre CA-07, Tuda Layout, Rajivgandhinagara, Melekote, Gangasandra main road Tumkuru-572105.	34	Udupi	<b>Sri K.P Mahalingaiah.</b> <b>Regional Director (Graded Pay)</b> <b>Mob : 99725-26647 Ph : (O) 0820-2522247</b> <b>E-Mail ID : <a href="mailto:drkpmkalkunda@gmail.com">drkpmkalkunda@gmail.com</a></b> KSOU Regional Centre Old Jillapanchaith Building, 2nd Floor Banaje, Udupi-576101.

35	Vijayanagara (Hosapete)	<b>Sri Prashanth M</b> <b>Regional Director (Temporary)</b> <b>Mob : 9945171920</b> <b>E-Mail ID : <a href="mailto:rdhosapete@gmail.com">rdhosapete@gmail.com</a></b> KSOU Regional Centre Kannada University, Vidyaranya, Hampi Vijayanagara Dist-583276.	36	Vijayapura	<b>Smt. Mythri D.S</b> <b>Regional Director (Temporary)</b> <b>Mob : 94836-28267</b> <b>E-Mail ID : <a href="mailto:vijavapursou@gmail.com">vijavapursou@gmail.com</a></b> KSOU Regional Centre, V.S.G Art's & Commerce College campus, No, 680/E, opposite to Akashavani kendra ring road, Vijayapura-586103.
37	Yadagiri	<b>Sri Hanumanth R.K</b> <b>Regional Director (Temporary)</b> <b>Mob : 98800-61361</b> <b>E-Mail ID : <a href="mailto:rdksouvadgiri@gmail.com">rdksouvadgiri@gmail.com</a></b> KSOU Regional Centre, Government Degree College, Chittapura Road, Yadgiri-585202			

**LEARNERS SUPPORT CENTRES**

Sl.NO.	Regional Centres	NAME AND ADDRESS OF THE LSC
1.	M Y S O R E  (HQ)	1. <b>Central Prison</b> Near St. Philomina Church, Ashoka Main Road, Mysuru-570001. Phone: 0821 249 2089, 0821-2492092, 9066828299 <a href="mailto:cpmys.prisons-kar@gov.in">cpmys.prisons-kar@gov.in</a>
		2. <b>T.T.L College.</b> 1 <sup>st</sup> main road Saraswathipuram Mysore-57009. M: 9611368056/9945539603 <a href="mailto:tlksoustudycentermysore2021@gmail.com">tlksoustudycentermysore2021@gmail.com</a>
		3. <b>Government First Grade College,</b> Krishnarajanagara-571602 M: 9448587991/ 8762639461 <a href="mailto:gfgckrn123@gmail.com">gfgckrn123@gmail.com</a>
		4. <b>Sri Adichunchanagiri First Grade College</b> H.D. Kote, Mysore. Dist Phone : 08228-297103/9845669983 <a href="mailto:sacfgchdkote@yahoo.com">sacfgchdkote@yahoo.com</a> / <a href="mailto:venkateshasac1972@gmail.com">venkateshasac1972@gmail.com</a>
		5. <b>Basudev Somani College.(Only for Classes)</b> Vishwamanava double road, Kuvempunagar, Mysore-23 Phone : 9591688536 <a href="mailto:basudev-somani@rediffmail.com">basudev-somani@rediffmail.com</a>
2.	Ballary	6. <b>Smt. B.E Hanumanthamma Memorial Institute of Management.</b> <b>Siruguppa</b> , Ballary road, Ballary. Dist Phone No: 9686371155 / 9739466669 <a href="mailto:smtbehmimgp@gmail.com">smtbehmimgp@gmail.com</a>
		7. <b>Vinoothana Women's Degree College</b> Indira nagara near SBI bank Kurugodu road, <b>Kampli</b> , Ballary. Dist Phone No: 8310667944 <a href="mailto:honneshgvt@gmail.com">honneshgvt@gmail.com</a>
		8. <b>Sri Sai Baba Arts, Commerce &amp; Science Degree College</b> 1 <sup>st</sup> cross Renuka nagar, Tallur road, Ballary. Phone No: 7204965666 <a href="mailto:aetbellary@gmail.com">aetbellary@gmail.com</a>
3.	Bagalakote	9. <b>Shri S.R. Narasapur &amp; Shri M B Shirur Commerce College.</b> <b>Bagalakote-587101.</b> Phone No: 9731289966/7019477366 <a href="mailto:santu812@gmail.com">santu812@gmail.com</a>
		10. <b>Basaveshwar Arts Science and Commerce College, Vidyagiri, Bagalakote-587102</b> M : 9972355515/08354295515 <a href="mailto:principaldegreeacs@gmail.com">principaldegreeacs@gmail.com</a>
		11. <b>Sri Rudragowda Patil Government First Grade College.</b> <b>Bilagi - 587 116, Bagalakote.</b> Ph No: 6364073931/ 9731095278/ 7090276049 <a href="mailto:gfgcbilagi@gmail.com">gfgcbilagi@gmail.com</a>
		12. <b>Sri Kalidasa Degree College Guduru,</b> Ilkal tq, Bagalakote. Dist.Ph.No. 9448898226 <a href="mailto:skdegreecollegegudursc@gmail.com">skdegreecollegegudursc@gmail.com</a>

		13.	<b>B. M Sankanur Arts &amp; Commerce Degree College For Women.</b> Near Bus Depo, kamatagi Road, <b>Guledgudda</b> , Bagalakote Dist. Ph No: 9741198950 <a href="mailto:bms18192@gmail.com">bms18192@gmail.com</a>
		14.	<b>Janatha Shikshana Sangha's Shree Tammanappa Chikkodi Art's and Commerce College.</b> Banahatti, Bagalakote 587311.Ph. No: 9844966083. <a href="mailto:stccollegebnt@yahoo.com">stccollegebnt@yahoo.com</a>
		15.	<b>Ashok B Nayak Degree College</b> LokapurRoad,Ballur(RC), <b>Mudhol</b> Ph. No: 9900559498. <a href="mailto:ysscaml@yahoo.in">ysscaml@yahoo.in</a>
4.	<b>Bangalore-1 (Bapujinagara)</b>	16.	<b>Silicon City College of Management &amp; Commerce</b> #1, Amruthnagar main road, Harinagar cross, JP Nagar 8 <sup>th</sup> Phase Bangalore-560108. Ph No: 080-26323044/ 7892701411/9844505680/8105505955. <a href="mailto:sccmc.ssw@gmail.com">sccmc.ssw@gmail.com</a>
		17.	<b>Oxford Degree College</b> Sir M Vishveshwarayya Layout 6 <sup>th</sup> block Ullala main road Bangalore-560110. Ph: 9980823665/9845185324 <a href="mailto:oxfordullal@gmail.com">oxfordullal@gmail.com</a>
5.	<b>Bangalore-2 (Mallechwaram)</b>		
6.	<b>Bangalore-3 (Yalahanka)</b>	18.	<b>Government First Grade College.</b> Near NES office road, <b>Sugappa layout</b> ,Kogilu cross Yalahanka Bangalore: 64. Phone No: 9448688993/080-28565188 <a href="mailto:gfgcyb@gmail.com">gfgcyb@gmail.com</a>
		19.	<b>Oceanik College of Higher Education.</b> # 3, 7 <sup>th</sup> cross, Ist main, Muneshwar Layout, Devinagar Bangalore-560094 Ph No: 080-23515863 / 9880788077 <a href="mailto:info@oceanik.in">info@oceanik.in</a>
		20.	<b>Oxford Institute of Graduate Studies Srinivasapura</b> Kogilu main road Bangalore-562149 Ph No: 9900932945 <a href="mailto:oxfordinstitutions1979@gmail.com">oxfordinstitutions1979@gmail.com</a>
		21.	<b>Primus School of Management Studies</b> <b>NO.114/1</b> ,Singanayakanahalli, Yellahanka, Bengaluru-560064 Ph No: 9739747269/9663127919 <a href="mailto:primusinstitutions@gmail.com">primusinstitutions@gmail.com</a>
7.	<b>Bangalore-4 (Madiwala)</b>	22.	<b>B T M First Grade College.</b> # 42, Hosapalya main road, Kudlugate, opposite fabri text <b>Garment Hosur main road</b> , Bangalore- 68 Phone No: 08041162727/9449979054/9341948860 <a href="mailto:btfmfgc2006@gmail.com">btfmfgc2006@gmail.com</a>
		23.	<b>Lorra Business Academy</b> No. 3/3, Begur main road Hongasandra, <b>Bommanahalli</b> , Bangalore -68. Ph: 8217639183 / 9844377992 <a href="mailto:info@loraa.co.in">info@loraa.co.in</a>
8.	<b>Bangalore-5 (K.R Puram)</b>	24.	<b>Government First Grade College.</b> Government First Grade College. K.R.Puram Bangalore- 560036. Phone No: 9964067273/080-2561237 <a href="mailto:gfgckrpuram@gmail.com">gfgckrpuram@gmail.com</a>

9.	Bangalore-6 (Sunkadakatte)	25.	<b>Sri Lakshmi College of Management and Science.</b> # 4&5, Sri Gandhadakaval, Magadi main road, <b>Sunkadakatte</b> , Bangalore-560091, Phone No: 080-23585832 / 9611055772 <a href="mailto:slgi2k3@gmail.com">slgi2k3@gmail.com</a>
		26.	<b>GT Institute of Management Studies &amp; Research.</b> <b>10/15-Sunkadakatte</b> , Magadi main road, Vishva Needam(P) Bangalore-91 Phone No: 9880331460 / 08023485545 <a href="mailto:info.gteducation@gmail.com">info.gteducation@gmail.com</a>
		27.	<b>Siddaganga College of Management &amp; Science</b> No. 33, Suraj Tower, Service Road, Near Laggere Bus Stop, Narasimha Swamy Layout, <b>Laggare</b> , Bangalore – 560058 Phone No: 7676850950/9008081151 <a href="mailto:siddagangacollege@gmail.com">siddagangacollege@gmail.com</a>
10.	Bangalore-7 (Haj Bhavana)		-NIL-
11.	Belagavi	28.	<b>Shalini Degree College.</b> Mallapur P.G Gokak Tq, <b>Ghataprabha</b> , Belagavi Ph No: 7829006694/9739391432 <a href="mailto:maheshkumathi2020@gmail.com">maheshkumathi2020@gmail.com</a>
		29.	<b>Dr. M.P Nadagouda Arts College Ghataprabha</b> S M Patil Vidya Bhavan Hukkeri main road Ghataprabha, <b>Gokak Tq</b> , Belagavi-591306 Ph No: 9448111131/8495052203 <a href="mailto:revanasiddeshwar71@gmail.com">revanasiddeshwar71@gmail.com</a>
		30.	<b>S.C.V.S Dr. Kuligod Degree College.</b> Mahalingapura road <b>Mugalkhod taluk</b> , Raibag, Belagavi. Ph No: 8123798557 <a href="mailto:prakashck147@gmail.com">prakashck147@gmail.com</a>
		31.	<b>Shri Gangaram First Grade College,</b> <b>Harugeri</b> behind K.E.B. Gokak road, <b>Harugeri Tq</b> , Belagavi. Ph No: 9986815294 <a href="mailto:jnyanjyoti.ed.s.hrg@gmail.com">jnyanjyoti.ed.s.hrg@gmail.com</a>
		32.	<b>C L E S Degree College</b> Near Basava Circle, <b>Chikodi Tq</b> Belagavi -591201. Ph No: 9740040608 <a href="mailto:smvckd@gmail.com">smvckd@gmail.com</a>
		33.	<b>Rural Development Society's B S W College.</b> Behind B.E.O Office Laxmi Nagar, <b>Mudalgi</b> , <b>591312</b> Belagavi. Ph No: 0833-4250386 M: 8095559575 <a href="mailto:rdsmudalgi1992@gmail.com">rdsmudalgi1992@gmail.com</a>
		34.	<b>S.R.E.S First Grade College.</b> Kalloli, Mudalgi tq, Belagavi. Ph No: 9739699410 / 7892887561 <a href="mailto:sresfgckalloli@gmail.com">sresfgckalloli@gmail.com</a>
		35.	<b>M.G.C.G. Memorial(R) Women's Arts College.</b> <b>Athani</b> , Belagavi-590009 Ph No: 7026228581 <a href="mailto:mgcgda.atn@gmail.com">mgcgda.atn@gmail.com</a>
		36.	<b>Shri Basaveshwar Education Society's Shree I R Belakud Degree college.</b> <b>Kalloli</b> , Ph No: 9449418371 / 7026842568 <a href="mailto:ksoukalloli@gmail.com">ksoukalloli@gmail.com</a>

		37.	<b>Noble Degree college.</b> <b>Halyal road near sankonatti cross, Athani-591304.</b> Ph No: 9731067946 / 9972011038 <a href="mailto:noblecollege16@gmail.com">noblecollege16@gmail.com</a>
		38.	<b>S.V.E.S Arts, Commerce, Science &amp; BCA College.</b> Harugeri, <b>Raibag Taluk</b> , Belagavi. Ph No: 9538574272 <a href="mailto:shantuburlatti272@gmail.com">shantuburlatti272@gmail.com</a>
		39.	<b>V.S.M.S Arts &amp; Science Degree College.</b> Shrinthe Colony, <b>Nippani</b> , Belagavi-591237. Ph No: 9620131146 <a href="mailto:info.vsm4289@gmail.com">info.vsm4289@gmail.com</a>
		40.	<b>Sri Basaveshwara Art's Degree College.</b> @Kabbur post, Raibag road, Kabbur. Ph No: 990152105 / 9341696034 <a href="mailto:smvbgm@gmail.com">smvbgm@gmail.com</a>
12.	Bidar	41.	<b>Om Siddi Vinayaka Degree College.</b> 2 <sup>nd</sup> floor, Halwai complex, near Ambedkar circle, Bidar Dist. Ph No: 9740314916 <a href="mailto:svcollegebidar@yahoo.in">svcollegebidar@yahoo.in</a>
		42.	<b>Matoshree Malanbai Jadhav Arts andCommerce Degree College.</b> Ghata borala, <b>Humnabad</b> , Bidar District. Ph No: 08483275686 / 9606750797 / 9449618616. <a href="mailto:jadhav62625@gmail.com">jadhav62625@gmail.com</a>
		43.	<b>Krishna Trust, Shri Satyam College,</b> # 8-9-520/Krishna/Devi Colony near new bus stand <b>Bidar-585401</b> Ph No: 9449066775/9449088775/08482-229095 <a href="mailto:sscbidar@gmail.com">sscbidar@gmail.com</a>
		44.	<b>Ramachandra Veerappa Arts, Science and Commerce Degree College.</b> NH-65, bypaas Mumbai-Hyderabad road, <b>Humnabad</b> , Bidar Dist. Ph No: 9986458751 <a href="mailto:rvwomensdegreecollege@gmail.com">rvwomensdegreecollege@gmail.com</a>
13.	Chamarajanagara		-NIL-
14.	Chikkaballapura	45.	<b>Vishwa Vivek Degree College.</b> Vadhuran Compound, North Extension, 2 <sup>nd</sup> ward, <b>Vapasandra</b> , Chikballapur-562101. Ph No: 7892822709 <a href="mailto:viswavivek125@gmail.com">viswavivek125@gmail.com</a>
		46.	<b>Bluemoon First Grade College.</b> 2 <sup>nd</sup> floor, N.N.K Building, behind KSRTC depo, Bangalore road <b>Chintamani</b> , Chikkaballapura Dist. Ph No: 9849789456 <a href="mailto:bluemooninstitutes@gmail.com">bluemooninstitutes@gmail.com</a>
		47.	<b>Blooms First Grade College.</b> Karakur Cross, Bagepalli, Chikkaballapura Dist.-561207 Ph No: 9731151730/9620586796/8150283739 <a href="mailto:bloomsacademy1947@gmail.com">bloomsacademy1947@gmail.com</a>

15.	Chikkamagalur	48.	<b>Govt. Women's First Grade College</b> NMC Circle, Mallanadur Road, <b>Chikamagalur</b> – 577 101 Ph: 08262-233871 M:94492-07991/9480139153 <a href="mailto:gwfgcckm@gmail.com">gwfgcckm@gmail.com</a>
		49.	<b>Government First Grade College.</b> <b>Birur</b> , Kadur taluk Chikkamagaluru Dist. Phone No: 08267255399/7204779549 <a href="mailto:principalgfgcbirur4@gmail.com">principalgfgcbirur4@gmail.com</a>
16.	Chitradurga	50.	<b>K M S First Grade College,</b> Nh-13, Pillekerenahally, <b>Chitradurga.</b> Ph No: 7349222350/9448373916 <a href="mailto:bapuji.cta@gmail.com">bapuji.cta@gmail.com</a>
		51.	<b>Don Bosco Degree College.</b> Padma layout near B C M Hostel Shanimahathma Temple Road, Challakere Road <b>Chitradurga</b> -577501. Ph No: 8105056318 <a href="mailto:donboscodegree2020@gmail.com">donboscodegree2020@gmail.com</a>
		52.	<b>Government Arts College.</b> <b>Chitradurga</b> -577501. Ph No: 9448232934 / 7019072561 <a href="mailto:-@gmail.com">-@gmail.com</a>
		53.	<b>Sri Maheshwari Degree college.</b> <b>Chikkabanahalli</b> , B.G kere road Chitradurga. Ph No: 8310845240 / 7829478223 <a href="mailto:lohith577@gmail.com">lohith577@gmail.com</a>
		54.	<b>Maharaja Madakari Nayaka First grade College For Arts &amp; Commerce,</b> <b>K.B.Extension ,Oppsite Fort, Chitradurga-577501</b> Phone No: 8722722787 <a href="mailto:ksoummnfgc@gmail.com">ksoummnfgc@gmail.com</a>
17.	Davanagere	55.	<b>Shri Devaraj URS First Grade College</b> <b>Honnur Gollarahatti</b> , NH4- By Pass Road. Davanagere Ph: 9535114063 <a href="mailto:rakesh.koknoor@gmail.com">rakesh.koknoor@gmail.com</a>
		56.	<b>Dr Zakir Hussain First Grade College.</b> Basha Nagar, <b>Davanagere</b> -577001. Ph No: 7899785819/7892548419. <a href="mailto:ssev98hsd@gmail.com">ssev98hsd@gmail.com</a>
		57.	<b>Sri Shivalingeshwara Swamy Government First Grade College</b> <b>Channagiri</b> , Davanagere District. - 577 213 M : 9449474321/9964178043 <a href="mailto:sssgfgcc@gmail.com">sssgfgcc@gmail.com</a>
		58.	<b>A.H.A.H First Grade College.</b> Arasikere, Harapanahalli tq, vijayanagar. Phone No: 7353464344 / 8197262111 <a href="mailto:hvagesh@gmail.com">hvagesh@gmail.com</a>
18.	Dharwad	59.	<b>Shri Chatrapathi Shivaji Arts &amp; Commerce College.</b> Udyoga Bhavana, Nidvani Arcade Jublee, Circle- <b>Dharwad.</b> Ph No: 9480043794/9480062375 <a href="mailto:nca.lng@gmail.com">nca.lng@gmail.com</a>

		60.	<b>Central Jail.</b> Kittur rani, Chennamma Post, PB Road, <b>Dharwad-580008</b> Ph No: 0836-2447428 <a href="mailto:cpdwd.prisons-kar@gov.in">cpdwd.prisons-kar@gov.in</a>
		61.	<b>The Aditya Foundation.</b> Krishna Mansion, 2 <sup>nd</sup> floor UBL road Dharwad Head post office Dharwad-580001. Ph No: 9901469338 <a href="mailto:theadityafoundation@gmail.com">theadityafoundation@gmail.com</a>
		62.	<b>Malatesh Degree college of Science, Commerce &amp; Art's.</b> Shiraguppi-580023. Ph No: 8553768577 <a href="mailto:malateshcollege2022@gmail.com">malateshcollege2022@gmail.com</a>
		63.	<b>KSS Arts, Commerce &amp; Science Colleges.</b> Vidyanagar, Hubli. Ph No: 8050141606 <a href="mailto:renukaparamedical7@gmail.com">renukaparamedical7@gmail.com</a>
		64.	<b>LATE Shree Janardhanarao Parashuramrao Shiragurkar Degree College</b> Paramanandawadi Tq Raibag Belagavi Ph No: 9538379093 <a href="mailto:jpsdcpwai@gmail.com">jpsdcpwai@gmail.com</a>
		65.	<b>Government First Grade College Alnavar</b> Vidyanagar Alnavar Ph No: 9611705321 <a href="mailto:principalgfgcalnr@gmail.com">principalgfgcalnr@gmail.com</a>
		66.	<b>B C N Arts commerce&amp; Science PU &amp; Degree College Laxmeshwar, Laxmeshwar(TQ), Gadag (Dist)</b> Ph No: 9945200514/9845998919 <a href="mailto:principallbcnouse@gmail.com">principallbcnouse@gmail.com</a>
		67.	<b>Indian Institute of Inspirational Leadership for Rural development.</b> Sri Guddada Basaveshwara Temple Surashettikoppa, Kalaghatgi Tq, Dharwad dist. Ph No: 9945200514/9845998919 <a href="mailto:principallbcnouse@gmail.com">principallbcnouse@gmail.com</a>
		68.	<b>I.B.M.R College of Commerce &amp; Management.</b> IBMR #567, Akshy Colony, Vidyanagar, Hubli-580021, Ph No: 8884500775/9141067905, 0836-2233355 <a href="mailto:ksou@ibmrbschool.org">ksou@ibmrbschool.org</a>
19.	Gadag	69.	<b>Shri Jagadguru Tontadarya Vidyapeeth's Basaveshwara Arts, Commerce&amp; Science College</b> Pala Badami road Gadag M: 9535565544 <a href="mailto:basaveshwaragadag@gmail.com">basaveshwaragadag@gmail.com</a> / <a href="mailto:maruti.b2@gmail.com">maruti.b2@gmail.com</a>
		70.	<b>Kalyanasiri Foundations, Kalyanasiri Arts &amp; Commerce College.</b> L.L Building, near old DC office circle, Gadag M: 9448821887 <a href="mailto:kalyanasiricollegegadag1@gmail.com">kalyanasiricollegegadag1@gmail.com</a>
		71.	<b>S.M.E.S Abdul Kalam Art' Commerce &amp; Science Degree Colleges.</b> Gandhi circle, Station road, Gadag-582101. Ph No: 9449694000 <a href="mailto:venugopald0009@gmail.com">venugopald0009@gmail.com</a>

		72.	<b>Shri Yedeyur Siddalingeshwar First Grade Arts College.</b> Naragund, Gadag. Ph No: 9632362974,9739242491 <a href="mailto:sysprince2009@gmail.com">sysprince2009@gmail.com</a>
20.	Hassan	73.	<b>Government First Grade College.</b> Holenarasipura, Hassan. Ph No: 8105965494 <a href="mailto:gfgchnpura1980@gmail.com">gfgchnpura1980@gmail.com</a>
		74.	<b>New Alliance First Grade College.</b> New alliance First Grade commerce college, Gayathri Extension, <b>Chennarapatna</b> , Hassan. Ph No: 9845982006 <a href="mailto:newalliancecrp@gmail.com">newalliancecrp@gmail.com</a>
		75.	<b>Government First Grade College.</b> Udayapura, <b>Chennarayapatna Tq</b> , Hassan. Ph No: 9448868213 <a href="mailto:gfgcudayapura@gmail.com">gfgcudayapura@gmail.com</a>
21.	Haveri	76.	<b>B.R Tambakada Arts's, Commerce and Science First Grade College.</b> Hirekerur, Haveri (Dist). Ph No: 08376 200390 /9448789390 / 81977 98687 / 9164703005. <a href="mailto:principalbrtcollege@gmail.com">principalbrtcollege@gmail.com</a>
		77.	<b>B.A.J.S.S Arts &amp; Commerce Women's Degree College.</b> Gayathri Campus, Halageri Road <b>Ranebennur-581115</b> , Haveri District. Ph No: 9964570601 / 9731311298 <a href="mailto:bajssksou14@gmail.com">bajssksou14@gmail.com</a> <a href="mailto:bajsswck09@gmail.com">bajsswck09@gmail.com</a>
		78.	<b>RTE Society's Arts Science and Commerce Degree College.</b> PB Road Magod cross, <b>Ranebennur-581115</b> , Haveri District. Ph No: 9449121300 / 9341375835 <a href="mailto:principalrtesbed@gmail.com">principalrtesbed@gmail.com</a>
		79.	<b>SMT Siddhamma Basanagoudra Patil Degree College Masur</b> AT/PO-Masur, Rattihalli Tq, Haveri District-581210 Ph No: 9741260764 / 8867797379 <a href="mailto:Principalsbpfg@gmail.com">Principalsbpfg@gmail.com</a>
22.	Kalaburgi	80.	<b>M N Desai Degree College</b> Behind S K Yatrik Nivas, New Jevargi Road, <b>Kalaburgi-585102</b> . Ph No: 9611148555 <a href="mailto:mndesaicollege@gmail.com">mndesaicollege@gmail.com</a>
		81.	<b>Ananya Degree College &amp; MSW College OLD</b> Jewargi Road Sadshiva Nagar <b>Kalaburgi</b> .Ph No: 7338207777/9071119555 <a href="mailto:ananyadegreecollege@gmail.com">ananyadegreecollege@gmail.com</a>
		82.	<b>Reshmi Degree College.</b> Reshmi Vidya Bhavan Behind Gulbarga University Saraswathipur Kusnoor Road, <b>Kalaburgi</b> . Ph No: 9900916142/08472265279 <a href="mailto:rect_9@yahoo.com">rect_9@yahoo.com</a>
		83.	<b>Om Sai Art's and Commerce Degree College.</b> Vidyanagar, <b>Sedam</b> Kalabugri Dist.Ph No: 9448876824 <a href="mailto:omsaic681@gmail.com">omsaic681@gmail.com</a>

		84.	<b>Swamy Vivekananda Arts Degree College.</b> Sedam, Patil & Patil complex, 1 <sup>st</sup> floor, Chincholi cross, Kalaburgi road, Sedam Ph No: 7760200799 / 8441277607 <a href="mailto:svmswclg.sedam@gmail.com">svmswclg.sedam@gmail.com</a>
		85.	<b>Guruji Degree College.</b> Basaveshwar Colony, Kalaburgi-585105 Ph No: 9901165234/7204256778 <a href="mailto:gurujicollege@gmail.com">gurujicollege@gmail.com</a>
		86.	<b>Sambuddha Degree College</b> Opposite Taluka panchayat Office Aland. Ph No: 9964858633/8792054343 <a href="mailto:samata.aland@gmail.com">samata.aland@gmail.com</a>
		87.	<b>Kaleshwar Arts &amp; Commerce Degree College.</b> Kalagi- Chettapura Tq, Kalaburgi Dist-585312. Ph No: 9108847163/9739426404 <a href="mailto:sanguarankal63@gmail.com">sanguarankal63@gmail.com</a>
23.	Karwar	88.	<b>Govt. Arts &amp; Science College</b> Karwar-581 301, U.K District. Ph No: 0838222632/94496 29599 <a href="mailto:gascollegekwr@gmail.com">gascollegekwr@gmail.com</a>
		89.	<b>Vishvadarshana College of Education</b> K.R Road Ganeshapuram Post, Balagi Mane, Yellapura, Uttara Kannada Ph No: 9448965684 <a href="mailto:vishwadarshanabed@gmail.com">vishwadarshanabed@gmail.com</a>
		90.	<b>Government First Grade College.</b> Prabhatha Nagara, Honnavara Uttara Kannada-581334. Ph No: 9899088861 <a href="mailto:pringfgchonnavar@gmail.com">pringfgchonnavar@gmail.com</a>
24.	Kolar	91.	<b>Government First Grade College,</b> Rajivgandhi Extension (KUDA), Robertsonpete, KGF-563122 M : 9663125139/ 9535304838 <a href="mailto:gfgc.kgf@gmail.com">gfgc.kgf@gmail.com</a>
25.	Kollegala	92.	<b>Mahadeshwara Government First Grade College</b> Kollegala, Chamarajanagara. Ph No: 8660417952 <a href="mailto:smgfgc@gmail.com">smgfgc@gmail.com</a> / <a href="mailto:premalathab2012@gmail.com">premalathab2012@gmail.com</a>
26.	Koppala	93.	<b>Rudramma Basappa Degree College.</b> SSS Building Near Anjaneya Temple behind Srinivas Petrol Bunk Julyanagar, Gangavathi Koppala - 583227. Ph No: 9844255605 <a href="mailto:shriputtarajaedugvt@yahoo.com">shriputtarajaedugvt@yahoo.com</a>
		94.	<b>St. Pauls College .</b> Vasudeva Varnekar Complex, Opp KSRTC bus stand Koppal – 582114 Ph No: 0853-9230939 / 9449621046 <a href="mailto:bhavanikoppal@yahoo.in">bhavanikoppal@yahoo.in</a>
27.	Mandya	95.	<b>Government First Grade College.</b> GFGC Nagamangala, Beereshwarapura post, Near Devalapura Hand post, Nagamangala Taluk, Mandya Dist. Ph No: 8618298867 <a href="mailto:gfgcnagamangala@gmail.com">gfgcnagamangala@gmail.com</a>

28.	Mangalore	96.	<b>St.Philomena College</b> Darbe, <b>Puttur</b> , Dakshina Kannada-574202 M: 0825-12 30340, M : 9448858101 <a href="mailto:ksoustudycentre@spputtur.ac.in">ksoustudycentre@spputtur.ac.in</a>
		97.	<b>Kukke Sri Subrahmanyeshwara College, Subrahmanya</b> Kadaba Tq, Dakshina Kannada- 574238M : 7349222300 <a href="mailto:kssccollege1983@gmail.com">kssccollege1983@gmail.com</a>
		98.	<b>Alva's College.</b> Sundari Ananda Alva Campus, Vidyagiri, <b>Moodbidri</b> , Dhakshina Kannada, Karnataka-574227. Ph No: 7090715010/08258-261244 <a href="mailto:administration@alvas.org">administration@alvas.org</a>
29.	Madikeri	99.	<b>Govt First Grade College, Virajpet</b> Ph No: 9449766772/7259535391 <a href="mailto:pringfgcvpet@gmail.com">pringfgcvpet@gmail.com</a>
30.	Periyapatna	100.	<b>V S S First Grade College</b> Siddi Kendra Sadhanapura, Rathnapuri. M: 08222245330/9886625922 <a href="mailto:yssfcollege1983@gmail.com">yssfcollege1983@gmail.com</a>
		101.	<b>B.G.S First Grade College.</b> Periyapatna tq, Mysore-571107 Ph No: 9449391975 <a href="mailto:bgsfirstgradecollegeppatna@gmail.com">bgsfirstgradecollegeppatna@gmail.com</a>
31.	Raichur	102.	<b>Muniyappa Muddappa Degree College</b> A.B Patil Complex, Near Ek-Minar, <b>Beroon Quilla</b> , Raichur. Ph No: 9986263255 / 9481354163 <a href="mailto:mmdegreercr@gmail.com">mmdegreercr@gmail.com</a>
		103.	<b>National Womens Degree College- Lingasuru.</b> Vidyabhavana Building road, <b>Lingasur</b> -584122 Raichur District. Ph No: 9480062375/8453368811 <a href="mailto:nca.lng@gmail.com">nca.lng@gmail.com</a>
		104.	<b>Dr. Sudhamurthy info Women's Degree College.Lingasugur</b> Ph No: 9632596158/9743499882 <a href="mailto:dsmi.info2019@gmail.com">dsmi.info2019@gmail.com</a>
		105.	<b>Sri Swamy Vivekananda Degree College.</b> <b>Konganahatti</b> , near BRC Office, PWD campus, Sindhanur-584128Ph No: 9742265256 <a href="mailto:ssbetsindhanur@gmail.com">ssbetsindhanur@gmail.com</a>
		106.	<b>Sri Kanakadasa Degree College.</b> <b>Sukalapete</b> , Sindhanur-584128 Ph No: 8310811880 <a href="mailto:kanakadas.d464@gmail.com">kanakadas.d464@gmail.com</a>
		107.	<b>Sri Gnana Ganga Degree College.</b> NGO colony near Jamalamma temple, Raichur. Ph No: 9916941389 <a href="mailto:srignanaganga@gmail.com">srignanaganga@gmail.com</a>

		108.	<b>Government First Grade College, Raichur</b> Lingasugur Road, Near KEB School, Raichur-584101 Ph No: 9449274177 <a href="mailto:yanka1967@gmail.com">yanka1967@gmail.com</a>
		109.	<b>Shivasharane Hemareddy Mallamma College Of Education</b> Bangalore bye pass road <b>Lingasugur</b> Raichur, dist. Ph No: 9986347238 / 7760160145 <a href="mailto:shmbedlgs@gmail.com">shmbedlgs@gmail.com</a>
32.	<b>Ramanagara</b>		<b>-NIL-</b>
		110.	<b>Tunga Mahavidyalaya</b> Anandagiri <b>Tirthahalli</b> , Shivamogga. M: 08181228262 / 9343633655 / 9449933441 <a href="mailto:tunga.degreecollege@gmail.com">tunga.degreecollege@gmail.com</a>
33.	<b>Shivamogga</b>	111.	<b>Lal Bahaddur Art's, Science &amp; S.B Solabanna ShettyCommerce College.</b> Tarapura Campus, Jog Road, Sagara-577401M:08183226137 / 7338464187 <a href="mailto:lbsbscollegesagar@gmail.com">lbsbscollegesagar@gmail.com</a>
		112.	<b>D.K Shivakumar B.Ed College Hebburu Mahavidyalaya.</b> Shankaramut road old town, Hebburu Bhadravathi, Shivamogga . M: 9880608004 / 9590969400 <a href="mailto:dppraveen123@gmail.com">dppraveen123@gmail.com</a>
34.	<b>Tumkur</b>	113.	<b>Government First grade College</b> High School road, <b>Madhugiri</b> Tumkur District.M : 8971742314 / 9972979137 <a href="mailto:madhugirigfgc@gmail.com">madhugirigfgc@gmail.com</a>
		114.	<b>Samvedana Science &amp; Commerce First Grade College.</b> N H 66, <b>Khambadakone</b> , Byndoor, Udupi Dist-576219. 9449725906/7899418506. <a href="mailto:samvedanafgc2017@gmail.com">samvedanafgc2017@gmail.com</a>
35	<b>Udupi</b>	115.	<b>Govt First Grade College Byndoor</b> Vidyanagar, Byndoor-576214 Ph No: 9538380222/9483089413 <a href="mailto:gfgc.bynd@gmail.com">gfgc.bynd@gmail.com</a>
		116.	<b>M.G.M. College</b> Udupi-Manipal Hwy, <b>Kunjibettu</b> , Udupi-576102 Ph: 0820-2524599/ 252 0359/2530410 M: 9964896955 <a href="mailto:principal_mgm@yahoo.co.in">principal_mgm@yahoo.co.in</a>
36.	<b>Vijayanagara (Hospete)</b>	117.	<b>Sri Akshaya College Of Commerce And Management Degree College.</b> Beside Vijayashree Heritage OLD Malapanagudi Vasavi Badavane Hospet-583201 PH NO:8792619996/8722030112 <a href="mailto:sriakshayacollege@gmail.com">sriakshayacollege@gmail.com</a>
		118.	<b>K M S First Grade College</b> Khanahosalli, near KSRTC Bus Stop,Kudlugi tq,Vijayanagar. Phone No: 9986825450 <a href="mailto:kmsfgcprincipal@gmail.com">kmsfgcprincipal@gmail.com</a>

37.	Vijayapur	119.	<b>Vidya Vardhak Sangh's Bansilal Vithaldas Darbar Degree College.</b> Darbar High School Campus, Station Road, <b>Vijayapur-586104</b> Ph No: 9448245811/9886704133/ 7829073560 <a href="mailto:ghmsriharibjp@gmail.com">ghmsriharibjp@gmail.com</a>
		120.	<b>Central Prision.</b> Darga road, Central Jail <b>Vijayapura.</b> Ph. No: 9480806490 <a href="mailto:cpvpr.prisons-kar@gov.in">cpvpr.prisons-kar@gov.in</a>
		121.	<b>Diamond Degree College.</b> Gunnapur road, near Gandhinagara <b>Vijayapura.</b> Ph No: 9845110426 <a href="mailto:diamonddcdssbki@gmail.com">diamonddcdssbki@gmail.com</a>
		122.	<b>Mathoshree Ambavva KHED Arts' Commerce &amp; Science College.</b> Ramamandira road Mathapathi galli, <b>Vijayapura-586101.</b> Ph. No: 9108182131. <a href="mailto:shankuntala.golande@gmail.com">shankuntala.golande@gmail.com</a>
		123.	<b>Shri Sahyadri Arts, Commerce &amp; Science College.</b> B L D E Road 135 <b>Vidyanagar</b> , Vijayapur-586103 Ph No: 9964376718 <a href="mailto:sahyadribjp@gmail.com">sahyadribjp@gmail.com</a>
		124.	<b>Sri Revanasiddeshwara Degree College. Muddebihala, Vijayapura</b> Dist. Ph No: 9844855158 <a href="mailto:princ.srsmb@gmail.com">princ.srsmb@gmail.com</a>
		125.	<b>Adarsh First Grade Arts and Science College.</b> Adarsh Campus, <b>Kalakeri</b> , Talikoti Tq, Vijayapura. Ph No: 9740629165 / 9620320247 <a href="mailto:munna4u487@gmail.com">munna4u487@gmail.com</a>
		126.	<b>Shri Jagadamba First Grade Arts &amp; Science College.</b> <b>Hittanahalli</b> L.T Devarahipparagi tq, Vijayapura -586215. Ph No: 9845247791/9740316139 <a href="mailto:sfncmed@gmail.com">sfncmed@gmail.com</a> / <a href="mailto:sifgmsw@gmail.com">sifgmsw@gmail.com</a>
		127.	<b>Mathoshri Gowramma Womens First Grade College.</b> Siddalingeshwara colony old Bolegaon road, <b>Indi-586209.</b> Ph no: 9449213039/9731549997 <a href="mailto:santoshkembogi@gmail.com">santoshkembogi@gmail.com</a>
		128.	<b>G.R.G Art's Y.A Patil Commerce &amp; M F Doshi Science Degree College.</b> Sindhagi road, <b>Indi.</b> Ph No: 9663502279 <a href="mailto:pplgrgindi@gmail.com">pplgrgindi@gmail.com</a>

		129.	<b>Shri Ramakrishna Arts, Commerce &amp; Science College.</b> Arakeri, LT 06 Road, Arakeri. Ph No: 9972420999 <a href="mailto:ramkrishnacollage2019@gmail.com">ramkrishnacollage2019@gmail.com</a>
		130.	<b>Prakash C N Arts, Commerce &amp; Science Degree College</b> Adavi Lingeswar Colony, Near Central jail, vijayapur-586103 Ph No: 08352316151/8277684725 <a href="mailto:pcnksouvjp@gmail.com">pcnksouvjp@gmail.com</a>
		131.	<b>B.D.B.V.V.S. BANJARA ARTS, SCIENCE &amp; COMMERCE COLLEGE VIJAYAPURA</b> Banjara nagar, Solapur Road, Vijayapura-586103 Ph No: 9611224264 <a href="mailto:banjarabjp5213@yahoo.in">banjarabjp5213@yahoo.in</a>
38.	Yadgiri	132.	<b>Balaji Degree College,</b> LIC office opposite Hyderabad main road <b>Yadgiri</b> -585202 Ph no: 7259342149 <a href="mailto:srinivasbbandi84@gmail.com">srinivasbbandi84@gmail.com</a>
		133.	<b>Jawahar Degree College.</b> Opp Rural Police Station <b>Yadgiri</b> -585202. Ph No: 9901496525 <a href="mailto:iqbalkhasim.mn@gmail.com">iqbalkhasim.mn@gmail.com</a>
		134.	<b>Mahatma Gandhi Degree College</b> Hattikuni Road Yadgiri. Ph No: 08473227526/6363881918 <a href="mailto:rajubravnalli@gmail.com">rajubravnalli@gmail.com</a>

**Note:**

1. The list of Learner Support Centres is provisional.
2. The University reserves the right to change the Learner Support Centre opted by the candidate on unavoidable circumstances.

**ವಿದ್ಯಾರ್ಥಿವೇತನ ಘಟಕ**

ಕರ್ನಾಟಕ ರಾಜ್ಯ ಮುಕ್ತ ವಿಶ್ವವಿದ್ಯಾನಿಲಯದ ಆದೇಶ ಸಂಖ್ಯೆ: ಕರಾಮವಿ/ವಿ.ವೇ.ಘ-02/01/2024-25, ದಿನಾಂಕ : 01-08-2024 ಅನ್ವಯ ಮೆಟ್ರಿಕ್ ನಂತರದ ವಿವಿಧ ಸ್ನಾತಕ/ಸ್ನಾತಕೋತ್ತರ ಕೋರ್ಸುಗಳಲ್ಲಿ, ವ್ಯಾಸಂಗ ಮಾಡುವ ಪರಿಶಿಷ್ಟ ಜಾತಿ/ವರ್ಗದ ವಿದ್ಯಾರ್ಥಿಗಳಿಗೆ ಮೆಟ್ರಿಕ್ ನಂತರದ ವಿದ್ಯಾರ್ಥಿವೇತನಕ್ಕೆ ಅರ್ಜಿ ಸಲ್ಲಿಸಲು ಅವಕಾಶವಿರುತ್ತದೆ.

ವಿಶ್ವವಿದ್ಯಾನಿಲಯದ ಸ್ನಾತಕ/ಸ್ನಾತಕೋತ್ತರ ಪದವಿ ವಿಷಯಗಳಿಗೆ ಪ್ರವೇಶಾತಿ ಪಡೆಯುವ ಪರಿಶಿಷ್ಟ ಜಾತಿ/ವರ್ಗದ ವಿದ್ಯಾರ್ಥಿಗಳ ಕುಟುಂಬದ ವಾರ್ಷಿಕ ಆದಾಯ ಎಲ್ಲಾ ಮೂಲಗಳಿಂದ ರೂ. 2.50 ಲಕ್ಷ ಮೀರಿರಬಾರದು ಹಾಗೂ ಆದಾಯ ಪ್ರಮಾಣ ಪತ್ರವು ಚಾಲ್ತಿಯಲ್ಲಿರಬೇಕು.

- ಸ್ನಾತಕ/ಸ್ನಾತಕೋತ್ತರ ಪದವಿಗಳಿಗೆ ಪ್ರವೇಶಾತಿ ಪಡೆಯುವ SC/ST ವಿದ್ಯಾರ್ಥಿಗಳಿಗೆ ಒಂದು UG ಮತ್ತು ಒಂದು PG ಶಿಕ್ಷಣ ಕ್ರಮಗಳಿಗೆ ಮಾತ್ರ ವಿದ್ಯಾರ್ಥಿವೇತನ ಪಡೆಯಲು ಅವಕಾಶವಿರುತ್ತದೆ. (ಕರ್ನಾಟಕ ಸರ್ಕಾರದ ಮಾರ್ಗಸೂಚಿ ಅನ್ವಯ 06 ತಿಂಗಳ ಮತ್ತು ವಾರ್ಷಿಕ) ಕೋರ್ಸುಗಳಿಗೆ ಹಾಗೂ ಕರ್ನಾಟಕ ರಾಜ್ಯ ಮುಕ್ತ ವಿಶ್ವವಿದ್ಯಾನಿಲಯದ ಎಲ್ಲಾ Diploma ಹಾಗೂ Certificate ಕೋರ್ಸುಗಳಿಗೆ ಮೆಟ್ರಿಕ್ ನಂತರದ ವಿದ್ಯಾರ್ಥಿವೇತನ ಮಂಜೂರು ಮಾಡಲು ಅವಕಾಶ ಇರುವುದಿಲ್ಲ.
- ಕರ್ನಾಟಕ ಸರ್ಕಾರದ ಸಮಾಜ ಕಲ್ಯಾಣ ಇಲಾಖೆಯ ಸರ್ಕಾರದ ಆದೇಶ ಸಂಖ್ಯೆ:SWD/EDU/ED3/91/2023 (COM:1098854) ಬೆಂಗಳೂರು ದಿನಾಂಕ:03-07-2023 ಮತ್ತು ಸಕಇ-ಎಸ್ ಟಿಪಿ/108/2023 ದಿನಾಂಕ: 25-08-2023ರ ಹಾಗೂ ವಿಶ್ವವಿದ್ಯಾನಿಲಯದ ಆದೇಶದನ್ವಯ ಅರ್ಹ ಪರಿಶಿಷ್ಟ ಜಾತಿ/ವರ್ಗದ ವಿದ್ಯಾರ್ಥಿಗಳಿಗೆ ಶುಲ್ಕ ವಿನಾಯಿತಿಯಡಿ ಅನ್ವಯಿಸುವ ಪ್ರವೇಶಾತಿ ಪ್ರಕ್ರಿಯೆ ಶುಲ್ಕ(Admission Processing Fee) ಕೌಶಲ್ಯಾಭಿವೃದ್ಧಿ ಕೋರ್ಸು ಶುಲ್ಕ (Skill Development Fee) ಹಾಗೂ ಅಲ್ಯೂಮಿನ್ ಶುಲ್ಕ (Alumni Fee)ಗಳನ್ನು ಹಾಗೂ ವಿಶ್ವವಿದ್ಯಾನಿಲಯವು ಆಗಿಂದಾಗ್ಗೆ ಅಧಿಸೂಚಿಸುವ ಶುಲ್ಕಗಳನ್ನು ಪಾವತಿಸಿಕೊಂಡು, ನಿಯಮಾನುಸಾರ ನಿಗದಿಪಡಿಸಲಾದ ಷರತ್ತುಬದ್ಧ (ಷರತ್ತುಗಳನ್ನು “ಮುಚ್ಚಳಿಕೆ ಪತ್ರ” ಅನುಬಂಧ - “ಆ” ಮತ್ತು “ಕರಾರು ಪತ್ರ” ಅನುಬಂಧ - “ಆ” ಪತ್ರಗಳಲ್ಲಿ ಮುಂದೆ ವಿವರಿಸಲಾಗಿದೆ) ಶುಲ್ಕ ವಿನಾಯಿತಿ ಸೌಲಭ್ಯದಡಿ ಪ್ರವೇಶಾತಿ ನೀಡಲಾಗುತ್ತಿದೆ.
- ವಿದ್ಯಾರ್ಥಿಗಳು ಪ್ರವೇಶಾತಿ ಪಡೆಯುವ ಸಂದರ್ಭದಲ್ಲಿಯೇ ವಿದ್ಯಾರ್ಥಿವೇತನ ಮಾಹಿತಿ ಪಡೆಯುವುದು ಉತ್ತಮ ಸದರಿ ವಿದ್ಯಾರ್ಥಿಗಳು <https://ssp.postmatric.karnataka.gov.in> ವೆಬ್‌ಸೈಟ್‌ನಲ್ಲಿ ಅರ್ಜಿ ಸಲ್ಲಿಸುವುದು.

**ಪರಿಶಿಷ್ಟ ಜಾತಿ/ವರ್ಗದ ವಿದ್ಯಾರ್ಥಿಗಳ ವಿಶೇಷ ಗಮನಕ್ಕೆ**

- ಪರಿಶಿಷ್ಟ ಜಾತಿ (SC)ಯ ವಿದ್ಯಾರ್ಥಿಗಳು ವಿದ್ಯಾರ್ಥಿವೇತನ ಮಂಜೂರಾತಿಗಾಗಿ ಆಯಾಯ ತಾಲ್ಲೂಕು/ಜಿಲ್ಲೆ ಸಮಾಜ ಕಲ್ಯಾಣ ಇಲಾಖೆಯಲ್ಲಿ ಬಯೋಮೆಟ್ರಿಕ್ E-KYC ಇ-ದೃಢೀಕರಣ ಮಾಡಿಸುವುದು ಕಡ್ಡಾಯವಾಗಿರುತ್ತದೆ.
- ಪರಿಶಿಷ್ಟ ವರ್ಗ (ST)ದ ವಿದ್ಯಾರ್ಥಿಗಳು ರಾಜ್ಯ ವಿದ್ಯಾರ್ಥಿವೇತನ ತಂತ್ರಾಂಶ (SSP)ದಲ್ಲಿ ವಿದ್ಯಾರ್ಥಿವೇತನಕ್ಕೆ ಅರ್ಜಿ ಸಲ್ಲಿಸಬೇಕಾದರೆ ಮೊದಲು ರಾಷ್ಟ್ರೀಯ ವಿದ್ಯಾರ್ಥಿವೇತನ ಪೋರ್ಟಲ್ (NSP)ನಲ್ಲಿ One-Time Registration Number (OTR)ಅನ್ನು Website: <https://scholarships.gov.in/> ವೆಬ್ ಸೈಟ್‌ನಲ್ಲಿ ಹೊಂದುವುದು ಕಡ್ಡಾಯವಾಗಿರುತ್ತದೆ.
- ಕರ್ನಾಟಕ ರಾಜ್ಯ ಮುಕ್ತ ವಿಶ್ವವಿದ್ಯಾನಿಲಯದ ಆಯಾಯ ಪ್ರಾದೇಶಿಕ ಕೇಂದ್ರಗಳ ವ್ಯಾಪ್ತಿಯಲ್ಲಿ ಬರುವಂತಹ ತಾಲ್ಲೂಕು / ಜಿಲ್ಲಾ ಪರಿಶಿಷ್ಟ ವರ್ಗಗಳ ಕಲ್ಯಾಣ ಇಲಾಖೆಗಳನ್ನು ಸಂಪರ್ಕಿಸಲು ತಿಳಿಸಲಾಗಿದೆ.
- **ಪರಿಶಿಷ್ಟ ಜಾತಿ ಮತ್ತು ಪರಿಶಿಷ್ಟ ವರ್ಗದ ವಿದ್ಯಾರ್ಥಿಗಳಿಗೆ ಪ್ರೋತ್ಸಾಹ ಧನ ಸೌಲಭ್ಯ**

ಕರ್ನಾಟಕ ಸರ್ಕಾರ ಸಮಾಜ ಕಲ್ಯಾಣ ಇಲಾಖೆಯ ನಡವಳಿಯ ಸರ್ಕಾರದ ಆದೇಶ ಸಂಖ್ಯೆ: ಸಕಇ 09 ಪಕವಿ 2023, ಬೆಂಗಳೂರು ದಿನಾಂಕ: 23.08.2023 ಹಾಗೂ ಮಾನ್ಯ ಆಯುಕ್ತರು ಸಮಾಜ ಕಲ್ಯಾಣ ಇಲಾಖೆ ಇವರ ಪತ್ರ ಸಂಖ್ಯೆ: ಸಕನಿ/ಇಡಿ-7/ಸಿಆರ್-11/2023-24 ಬೆಂಗಳೂರು ದಿನಾಂಕ: 05.09.2023ರ ಅನ್ವಯ ಸ್ನಾತಕ/ಸ್ನಾತಕೋತ್ತರ ಪದವಿ ವಿಷಯಗಳಲ್ಲಿ ಪ್ರಥಮ ಬಾರಿಗೆ ಪ್ರಥಮ ಪ್ರಯತ್ನದಲ್ಲಿ ಶೇಖಡ 60 ಹಾಗೂ ಅದಕ್ಕಿಂತ ಹೆಚ್ಚು ಅಂಕವನ್ನು ಪಡೆದ ಅರ್ಹ ವಿದ್ಯಾರ್ಥಿಗಳು ಇಲಾಖೆಯ ವೆಬ್ ಸೈಟ್ <https://swd.karnataka.gov.in> - Prize Money - Application ನಲ್ಲಿ ಅರ್ಜಿ ಸಲ್ಲಿಸಿ, ಸರ್ಕಾರದಿಂದ ಪ್ರೋತ್ಸಾಹ ಧನದ ಸೌಲಭ್ಯ ಪಡೆಯಲು ಅವಕಾಶವಿರುತ್ತದೆ.

ಸದರಿ ವಿದ್ಯಾರ್ಥಿಗಳು ಈ ಪ್ರೋತ್ಸಾಹ ಧನ ಸೌಲಭ್ಯವನ್ನು ಪಡೆಯಲು ಸಮಾಜ ಕಲ್ಯಾಣ ಇಲಾಖೆಯ ವೆಬ್ ಸೈಟ್‌ನಲ್ಲಿ ಅರ್ಜಿ ಸಲ್ಲಿಸಿರುವ ಸ್ವೀಕೃತಿ ಪ್ರತಿಯ ಜೊತೆ Gazetted Officer ರವರಿಂದ ನಿಗದಿತ ದಾಖಲೆಗಳನ್ನು ದೃಢೀಕರಿಸಿಕೊಂಡು ವಿಶ್ವವಿದ್ಯಾನಿಲಯದ ಕೇಂದ್ರ ಕಛೇರಿಯಲ್ಲಿ ಪ್ರವೇಶಾತಿ ಪಡೆದ ವಿದ್ಯಾರ್ಥಿಗಳು ವಿದ್ಯಾರ್ಥಿವೇತನ ಘಟಕದ ವಿಶೇಷಾಧಿಕಾರಿ / ಉಪಕುಲಸಚಿವರು, ಸಂಯೋಜನಾಧಿಕಾರಿಗಳಿಂದ ಸಹಿ ಪಡೆದು, ಹಾಗೂ ವಿಶ್ವವಿದ್ಯಾನಿಲಯದ ವಿವಿಧ ಪ್ರಾದೇಶಿಕ ಕೇಂದ್ರಗಳಲ್ಲಿ ಪ್ರವೇಶಾತಿ ಪಡೆದಿರುವ ವಿದ್ಯಾರ್ಥಿಗಳು ಆಯಾ ಪ್ರಾದೇಶಿಕ ಕೇಂದ್ರದ ನಿರ್ದೇಶಕರು/ಮೇಲಧಿಕಾರಿಗಳಿಂದ ಪ್ರೋತ್ಸಾಹ ಧನ ಅರ್ಜಿಗೆ ಸಹಿ ಹಾಗೂ ಮೊಹರಿನೊಂದಿಗೆ ಎಲ್ಲಾ ದಾಖಲಾತಿಗಳ ಪ್ರತಿಗಳನ್ನು ಜಂಟಿ ನಿರ್ದೇಶಕರು ಜಿಲ್ಲಾ ಸಮಾಜ ಕಲ್ಯಾಣ ಇಲಾಖೆ ಮೈಸೂರು. ಡಾ|| ಬಾಬು ಜಗಜೀವನರಾಂ ಭವನ ಕಟ್ಟಡ, ಆದಿಪಂಪ ರಸ್ತೆ, ಒಂಟಿಕೊಪ್ಪಲು ಪೂರ್ವ ಬಡಾವಣೆ, ಪಡುವಾರಹಳ್ಳಿ, ಮೈಸೂರು - 570012 ಇಲ್ಲಿಗೆ ಮುದ್ದಾಗಿ/ಅಂಚೆಯ ಮೂಲಕ ಸಲ್ಲಿಸುವುದು.

**ಷರತ್ತುಬದ್ಧ ಶುಲ್ಕ ವಿನಾಯಿತಿ ಸೌಲಭ್ಯದಡಿ ಪ್ರವೇಶಾತಿ ಪಡೆಯುವ ಪರಿಶಿಷ್ಟ ಜಾತಿ/ವರ್ಗದ ವಿದ್ಯಾರ್ಥಿಗಳು ಅನುಸರಿಸಬೇಕಾದ**

**ಕ್ರಮಗಳು**

1. ಪರಿಶಿಷ್ಟ ಜಾತಿ ಮತ್ತು ಪರಿಶಿಷ್ಟ ವರ್ಗಗಳಿಗೆ ಸೇರಿದ ವಿದ್ಯಾರ್ಥಿಯು ಕರಾಮುವಿಯ ಅನುಮೋದನೆಗೊಳಪಟ್ಟು ಕೇಂದ್ರ/ರಾಜ್ಯ ಸರ್ಕಾರದ ನಿಯಮದಂತೆ ಷರತ್ತುಬದ್ಧ ಶುಲ್ಕ ವಿನಾಯಿತಿಯಡಿ ಪ್ರವೇಶಾತಿ ಹೊಂದಲು ಅರ್ಹರಾಗಿರುತ್ತಾರೆ.
3. ವಿದ್ಯಾರ್ಥಿಯ ಕುಟುಂಬ ವಾರ್ಷಿಕ ಆದಾಯವು (ಅವಿವಾಹಿತರಾದಲ್ಲಿ ತಂದೆ, ತಾಯಿ ಮತ್ತು ಪೋಷಕರ, ವಿವಾಹಿತರಾದಲ್ಲಿ ಆಕೆಯ/ಆತನ ಪತಿ/ಪತ್ನಿಯ ಆದಾಯವನ್ನೂ ಒಳಗೊಂಡಂತೆ) ಎಲ್ಲಾ ಮೂಲಗಳಿಂದ ರೂ. 2,50,000/- (ರೂಪಾಯಿ ಎರಡು ಲಕ್ಷದ ಐವತ್ತು ಸಾವಿರ ಮಾತ್ರ) ಗಳನ್ನು ಮೀರದ ವಿದ್ಯಾರ್ಥಿಗಳು ಷರತ್ತುಬದ್ಧ ಶುಲ್ಕ ವಿನಾಯಿತಿ ಪ್ರವೇಶಾತಿ ಪಡೆಯಲು ಈ ಕೆಳಗಿನ ಕ್ರಮಗಳನ್ನು ಅನುಸರಿಸಬೇಕಾಗುತ್ತದೆ.
4. ಮೊದಲು ವಿದ್ಯಾರ್ಥಿಗಳು ರಾಜ್ಯ ವಿದ್ಯಾರ್ಥಿವೇತನ ತಂತ್ರಾಂಶ (SSP)ದಲ್ಲಿ 'User ID' ಮತ್ತು 'Password'ನ್ನು ಸೃಜಿಸಿ (Create) ಕೊಂಡಿರಬೇಕು.
5. ಷರತ್ತುಬದ್ಧ ಶುಲ್ಕ ವಿನಾಯಿತಿಯಡಿ ಪ್ರವೇಶಾತಿ ಪಡೆಯುವ ಪರಿಶಿಷ್ಟ ಜಾತಿ/ವರ್ಗದ ವಿದ್ಯಾರ್ಥಿಗಳಿಗೆ ಕರಾಮುವಿಯ ಷರತ್ತುಗಳಿಗೆ ಒಳಪಟ್ಟು ಹಾಗೂ ಒಪ್ಪಿ "ಮುಚ್ಚಳಿಕೆ ಪತ್ರ" ಮತ್ತು ವಿವಿಯ ಷರತ್ತುಗಳಿಗೆ ಒಳಪಡುವ ಕರಾರಿನ ಅನ್ವಯವಾಗಿ 100 (ನೂರು)ರೂ.ಗಳ E-Stamping ಪತ್ರದಲ್ಲಿ ಕರಾರು/ನಿರುದ್ಯೋಗ ಪ್ರಮಾಣಪತ್ರವನ್ನು ನೋಟರಿಯವರ ಮುಂದೆ ಪ್ರಮಾಣೀಕರಿಸಿ ಸಲ್ಲಿಸುವುದು.

**ಅನುಬಂಧ - "ಅ"**



**ಕರ್ನಾಟಕ ರಾಜ್ಯ ಮುಕ್ತ ವಿಶ್ವವಿದ್ಯಾನಿಲಯ**

ಮುಕ್ತಗಂಗೋತ್ರಿ, ಮೈಸೂರು-570 006

ವಿದ್ಯಾರ್ಥಿವೇತನ ಘಟಕ

E\_mail: co-ordinatorsstcellksou@gmail.com

Tel.No 0821-2500073 Ext : 591

**ಮುಚ್ಚಳಿಕೆ ಪತ್ರ**

2025-26ನೇ ಶೈಕ್ಷಣಿಕ ಸಾಲಿನ ಜನವರಿ ಆವೃತ್ತಿಯಲ್ಲಿ ಶುಲ್ಕ ವಿನಾಯಿತಿ ಸೌಲಭ್ಯದಡಿಯಲ್ಲಿ ಪ್ರವೇಶಾತಿ ಪಡೆಯುವ ಪರಿಶಿಷ್ಟ ಜಾತಿ/ವರ್ಗದ ವಿದ್ಯಾರ್ಥಿಗಳ ಮುಚ್ಚಳಿಕೆ ಪತ್ರ

ವಿದ್ಯಾರ್ಥಿಯ ಹೆಸರು		ಜಾತಿ	
ತಂದೆ/ ಗಂಡನ ಹೆಸರು		ಜನ್ಮ ದಿನಾಂಕ	
ವಿವಾಹಿತ/ಅವಿವಾಹಿತ/ಇತರೆ		ವಿದ್ಯಾರ್ಥಿಯ ಆಧಾರ್ ಸಂಖ್ಯೆ	
ಪ್ರವೇಶಾತಿ ಪಡೆಯುವ ಕೋರ್ಸ್ (ಪ್ರಥಮ, ದ್ವಿತೀಯ, ತೃತೀಯ)		ತಂದೆ/ಗಂಡನ ಆಧಾರ್ ಸಂಖ್ಯೆ	
ಕರಾಮುವಿ ನೋಂದಣಿ ಸಂಖ್ಯೆ		ತಾಯಿ ಆಧಾರ್ ಸಂಖ್ಯೆ	
SSP Student ID		ವಿದ್ಯಾರ್ಥಿಯ ಮೊ.ಸಂ	
E-Mail ID		ಪೋಷಕರ ಮೊ.ಸಂ	

ನನ್ನ ಎಸ್.ಎಸ್.ಎಲ್.ಸಿ ಅಂಕಪಟ್ಟಿಯಲ್ಲಿ ಇರುವಂತೆಯೇ ನನ್ನ ಹೆಸರು ಮತ್ತು ಜನ್ಮ ದಿನಾಂಕ ಆಧಾರ್\_ಕಾರ್ಡ್ ಹಾಗೂ ನಾನು ಸಲ್ಲಿಸುವ ಜಾತಿ ಪ್ರಮಾಣ ಪತ್ರ ಮತ್ತು ಚಾಲ್ತಿಯಲ್ಲಿರುವ ಆದಾಯ ಪ್ರಮಾಣ ಪತ್ರವು ಒಂದೇ ರೀತಿಯಲ್ಲಿರಬೇಕು.

ಮೇಲ್ಕಂಡ ವಿದ್ಯಾರ್ಥಿಯಾದ ನಾನು 2025-26ನೇ ಶೈಕ್ಷಣಿಕ ಸಾಲಿನ ಜುಲೈ ಆವೃತ್ತಿಯಲ್ಲಿ ಪ್ರವೇಶಾತಿ ಪ್ರಕ್ರಿಯೆ ಶುಲ್ಕ, ಕೌಶಲ್ಯಾಭಿವೃದ್ಧಿ ಶುಲ್ಕ, ಮತ್ತು ಅಲ್ಯುಮಿನಿ ಶುಲ್ಕ ಇವುಗಳನ್ನು ಮಾತ್ರ ಪಾವತಿಸಿರುತ್ತೇನೆ. ಸದರಿ ಶುಲ್ಕಗಳನ್ನು ವಿಶ್ವವಿದ್ಯಾನಿಲಯವು ಹಿಂದಿರುಗಿಸುವುದಿಲ್ಲ ಎಂದು ತಿಳಿದು, ಕೆಳಗಿನ ಷರತ್ತುಗಳಿಗೆ ಒಳಪಟ್ಟು, ಶುಲ್ಕ ವಿನಾಯಿತಿಯಡಿ ಪ್ರವೇಶಾತಿಯನ್ನು ಪಡೆದಿರುತ್ತೇನೆ.

ಸರ್ಕಾರದ ಮಾರ್ಗ ಸೂಚಿಯನ್ವಯ ರಾಜ್ಯ ವಿದ್ಯಾರ್ಥಿವೇತನ ತಂತ್ರಾಂಶ (SSP)ದ ಮೂಲಕ ಪ್ರವೇಶಾತಿ ಪಡೆದ ಕೂಡಲೇ ವಿದ್ಯಾರ್ಥಿವೇತನಕ್ಕೆ ಅರ್ಜಿ ಸಲ್ಲಿಸುವ SC ವಿದ್ಯಾರ್ಥಿಗಳು ಕಡ್ಡಾಯವಾಗಿ ಆಧಾರ್ ಆಧಾರಿತ **Biometric e-Authetication** ಹಾಗೂ **ST** ವಿದ್ಯಾರ್ಥಿಗಳು **NSP OTR** ಸಂಖ್ಯೆಯನ್ನು ನಮೂದು ಮಾಡಿ **SSP** ಅರ್ಜಿಯ ಅಂತಿಮ ಸ್ವೀಕೃತಿ ಪ್ರತಿಯನ್ನು ನಾನು ಪ್ರವೇಶಾತಿ ಪಡೆದ ಕರಾಮುವಿ ಕೇಂದ್ರ ಕಚೇರಿಯ ವಿದ್ಯಾರ್ಥಿವೇತನ ಘಟಕ ಅಥವಾ ಪ್ರಾದೇಶಿಕ ಕೇಂದ್ರ (ಯಾವುದು ಅನ್ವಯವಾಗುತ್ತದೋ ಅಲ್ಲಿಗೆ) ಸಲ್ಲಿಸುತ್ತೇನೆ.

ವಿ.ವಿಯ ಪ್ರವೇಶಾತಿ ಅಧಿಸೂಚನೆ ಸಂಖ್ಯೆ: ಕರಾಮುವಿ/ಪ್ರವಿ/ಎಡಿಎಂ---/---/2025-26 ದಿನಾಂಕ: ---.---.2025ರ ಅನ್ವಯ ವಿದ್ಯಾರ್ಥಿವೇತನ ನನ್ನ ಬ್ಯಾಂಕ್ ಖಾತೆಗೆ ಜಮೆಯಾದರೂ/ಜಮೆಯಾಗದಿದ್ದರೂ (ಯಾವುದು ಮೊದಲು ಘಟಿಸುವುದೋ ಅದು) ಸೆಮಿಸ್ಟರ್/ವಾರ್ಷಿಕ ಪರೀಕ್ಷೆಗೂ ಮುನ್ನ ಪ್ರವೇಶಾತಿಯ ಬಾಕಿ ಶುಲ್ಕಗಳನ್ನು ಕರಾಮುವಿಗೆ ಕಡ್ಡಾಯವಾಗಿ ಒಂದೇ ಕಂತಿನಲ್ಲಿ ಪಾವತಿಸಿ, ಪ್ರವೇಶಾತಿಯನ್ನು ಉರ್ಜಿತಗೊಳಿಸಲಾಗುವುದು ಹಾಗೂ ಸದರಿ 5 ತಿಂಗಳ ಅವಧಿಯೊಳಗೆ ಶುಲ್ಕ ಪಾವತಿಯಾಗದಿದ್ದಲ್ಲಿ ಈ ಸಂಬಂಧ

ಪ್ರವೇಶಾತಿಗೆ ಹಾಗೂ ಪರೀಕ್ಷೆಗೆ ಸಂಬಂಧಿಸಿದಂತೆ ಕರಾಮುವಿಯು ತೆಗೆದುಕೊಳ್ಳುವ ಯಾವುದೇ ಕ್ರಮಕ್ಕೆ ಬದ್ಧನಾ/ಳಾಗಿರುತ್ತೇನೆ ಎಂದು ಮೇಲ್ಕಂಡ ಷರತ್ತುಗಳನ್ನು ಸಂಪೂರ್ಣವಾಗಿ ಓದಿ ಒಪ್ಪಿ ಈ ಕೆಳಗೆ ಸಹಿ ಮಾಡಿರುತ್ತೇನೆ.

ಸೂಚನೆ: SSP ಯಲ್ಲಿ ಅರ್ಜಿ ಸಲ್ಲಿಸಿ ಅಂತಿಮ ಸ್ವೀಕೃತಿಯನ್ನು ಘಟಕಕ್ಕೆ ಸಲ್ಲಿಸಿದಲ್ಲಿ ಮಾತ್ರ ಸಿದ್ಧಪಾಠಗಳನ್ನು ವಿತರಿಸಲಾಗುವುದು ಇಲ್ಲದಿದ್ದಲ್ಲಿ ಶುಲ್ಕ ವಿನಾಯಿತಿ ಪ್ರವೇಶಾತಿಯು ತಂತಾನೆ ರದ್ದುಗೊಳ್ಳುವುದು ಎಂದು ತಿಳಿದಿರುತ್ತೇನೆ.

ವಿದ್ಯಾರ್ಥಿಯ ಖಾಯಂ/ಪ್ರಸ್ತುತ ಪೂರ್ಣ ವಿಳಾಸ:

ವಿದ್ಯಾರ್ಥಿಯ ಸಹಿ

ಸಂಖ್ಯೆ: ಕರಾಮುವಿ/ವಿ.ವೇ.ಘಟಕ/37/ವಿ.ಪು/2025-26/ಜನವರಿ/\_\_\_\_\_

ದಿನಾಂಕ : / /2025

**ಕಚೇರಿ ಉಪಯೋಗಕ್ಕೆ**

ವಹಿ ಸಂ\_\_\_\_\_ಕ್ರ.ಸಂ:\_\_\_\_\_

ಮೇಲಿನ ಎಲ್ಲಾ ಷರತ್ತುಗಳಿಗೆ ವಿದ್ಯಾರ್ಥಿಯು ಒಪ್ಪಿರುವ ಹಿನ್ನೆಲೆಯಲ್ಲಿ, ಷರತ್ತುಬದ್ಧ ಶುಲ್ಕ ವಿನಾಯಿತಿ ಸೌಲಭ್ಯದಡಿ ವಿದ್ಯಾರ್ಥಿಯ ಮುಚ್ಚಳಿಕೆಯ ಆಧಾರದ ಮೇಲೆ ಸಂಬಂಧಿಸಿದ ಎಲ್ಲಾ ದಾಖಲಾತಿಗಳನ್ನು ಪ್ರವೇಶಾತಿ ವಿಭಾಗದವರು ಪರಿಶೀಲಿಸಿಕೊಂಡು ಪ್ರವೇಶಾತಿಗೆ ಪರಿಗಣಿಸುವುದು ಹಾಗೂ ಸದರಿ ವಿದ್ಯಾರ್ಥಿಯು ಅಂತಿಮ ಸ್ವೀಕೃತಿಯನ್ನು ಘಟಕಕ್ಕೆ ಸಲ್ಲಿಸಿದ ನಂತರ ಸಿದ್ಧಪಾಠಗಳನ್ನು ವಿತರಿಸುವುದು.

ಕಾರ್ಯನಿರ್ವಾಹಕರ ಸಹಿ

ಸಹಾಯಕ ಕುಲಸಚಿವ

ಉಪಕುಲಸಚಿವ ಅಥವಾ ಪ್ರಾದೇಶಿಕ ನಿರ್ದೇಶಕ

02

**ಅನುಬಂಧ-“ಆ”**

**ಪ್ರಮಾಣ ಪತ್ರ / AFFIDAVIT**

.....ಬಿನ್ / ಕೋಂ .....ವಯಸ್ಸು .....ವಿಳಾಸ .....

ನಿವಾಸಿಯಾಗಿರುವ ನಾನು, ಈ ಮೂಲಕ ಪ್ರಮಾಣೀಕರಿಸುವುದೆಂದರೆ, ನಾನು ..... ಜಾತಿ ಹಾಗೂ ..... ಉಪ ಜಾತಿಗೆ ಸೇರಿದವನಾ/ಳಾಗಿದ್ದು, ಕರ್ನಾಟಕ ರಾಜ್ಯ ಮುಕ್ತ ವಿಶ್ವವಿದ್ಯಾಲಯದ (KSOU) ಮೈಸೂರು ಇಲ್ಲಿ 2025-26ನೇ ಶೈಕ್ಷಣಿಕ ಸಾಲಿನ ಜನವರಿ ಆವೃತ್ತಿಯಲ್ಲಿನ ಆದೇಶ ಸಂಖ್ಯೆ : ವಿ.ವಿ ಪ್ರವೇಶಾತಿ ಅಧಿಸೂಚನೆ ಸಂಖ್ಯೆ: ಕರಾಮುವಿ/ಪ್ರವಿ/ಎಡಿಎಂ--/--/2025-26 ದಿನಾಂಕ: --,--,2025ರ ಹಾಗೂ ವಿದ್ಯಾರ್ಥಿವೇತನ ಘಟಕದ ಆದೇಶ ಸಂಖ್ಯೆ:ಕರಾಮುವಿ/ವಿ.ವೇ.ಘ/02/01/2024-25 ದಿನಾಂಕ: 01.08.2024 ಅನುಸಾರ ಷರತ್ತಿಗೊಳಪಟ್ಟು ಶುಲ್ಕವಿನಾಯಿತಿ ಸೌಲಭ್ಯದಡಿ.....ಕೋರ್ಸ್‌ಗೆ ಪ್ರವೇಶಾತಿ ಪಡೆದಿರುತ್ತೇನೆ.

ನಾನು ನಿರುದ್ಯೋಗಿಯಾಗಿದ್ದು, ಯಾವುದೇ ಸರ್ಕಾರಿ/ಅರೆ ಸರ್ಕಾರಿ ಹುದ್ದೆಗಳಲ್ಲಿ ಅರೆ ಕಾಲಿಕ/ಪೂರ್ಣ ಕಾಲಿಕವಾಗಿ ಕರ್ತವ್ಯ ನಿರ್ವಹಿಸುತ್ತಿಲ್ಲವೆಂದು ಹಾಗೂ ನನ್ನ ಕುಟುಂಬ ವಾರ್ಷಿಕ ಆದಾಯ ಎಲ್ಲಾ ಮೂಲಗಳಿಂದ 2.50 ಲಕ್ಷ ರೂ.ಗಳನ್ನು ಮೀರಿರುವುದಿಲ್ಲವೆಂದು ಪ್ರಮಾಣೀಕರಿಸುತ್ತೇನೆ.

ನಾನು ಕರಾಮುವಿಯಲ್ಲಿ ಷರತ್ತುಬದ್ಧ ಶುಲ್ಕ ವಿನಾಯಿತಿ ಪ್ರವೇಶಾತಿ ಸೌಲಭ್ಯ ಪಡೆಯುತ್ತಿದ್ದು, ನಾನು ಪ್ರವೇಶಾತಿಯ ಮುಚ್ಚಳಿಕೆಯ ಪತ್ರದ ಷರತ್ತಿನಂತೆ ವಿದ್ಯಾರ್ಥಿವೇತನವು ನನ್ನ ವೈಯಕ್ತಿಕ ಬ್ಯಾಂಕ್ ಖಾತೆಗೆ ಜಮೆಯಾದರೂ/ಜಮೆಯಾಗದಿದ್ದರೂ (ಯಾವುದು ಮೊದಲು ಘಟಿಸುವುದೋ ಅದು) ಪ್ರವೇಶಾತಿ ಅಧಿಸೂಚನೆ ಅನ್ವಯ ಸೆಮಿಸ್ಟರ್/ವಾರ್ಷಿಕ ಪರೀಕ್ಷೆಗೂ ಮುನ್ನ ಪ್ರವೇಶಾತಿಯ ಬಾಕಿ ಶುಲ್ಕಗಳನ್ನು ಕರಾಮುವಿಗೆ ಕಡ್ಡಾಯವಾಗಿ ಒಂದೇ ಕಂತಿನಲ್ಲಿ ಪಾವತಿಸಿ, ಪ್ರವೇಶಾತಿಯನ್ನು ಉರ್ಜಿತಗೊಳಿಸಿಕೊಳ್ಳುತ್ತೇನೆ ಹಾಗೂ ಸದರಿ 5 ತಿಂಗಳ ಅವಧಿಯೊಳಗೆ ಶುಲ್ಕ ಪಾವತಿಯಾಗದಿದ್ದಲ್ಲಿ ಕಡ್ಡಾಯವಾಗಿ ವಿನಾಯಿತಿ ಪಡೆದಿರುವ / ಬಾಕಿ ಶುಲ್ಕಗಳನ್ನು ಒಂದೇ ಕಂತಿನಲ್ಲಿ ಪಾವತಿಸುತ್ತೇನೆ. ಇಲ್ಲವಾದಲ್ಲಿ ನನ್ನ ಪ್ರವೇಶಾತಿಗೆ ಹಾಗೂ ಪರೀಕ್ಷೆಗೆ ಸಂಬಂಧಿಸಿದಂತೆ ವಿಶ್ವವಿದ್ಯಾನಿಲಯವು ತೆಗೆದುಕೊಳ್ಳುವ ಯಾವುದೇ ಕ್ರಮಕ್ಕೆ ನಾನು ಬದ್ಧನಾ/ಳಾಗಿರುತ್ತೇನೆ. ಈ ನಿಟ್ಟಿನಲ್ಲಿ KSOU ರೂಪಿಸಿರುವ ನಿಯಮಗಳು ಮತ್ತು ನಿಬಂಧನೆಗಳನ್ನು ಕಾಲಕಾಲಕ್ಕೆ ಪಾಲಿಸಲು ಒಪ್ಪಿರುತ್ತೇನೆ ಎಂದು ಮೇಲ್ಕಂಡ ಷರತ್ತುಗಳನ್ನು ಸಂಪೂರ್ಣವಾಗಿ ಓದಿ ಒಪ್ಪಿ ಈ ಕೆಳಗೆ ಸಹಿ ಮಾಡಿರುತ್ತೇನೆ. ಎಂದು ಮೇಲ್ಕಂಡ ಷರತ್ತುಗಳನ್ನು ಸಂಪೂರ್ಣವಾಗಿ ಓದಿ ಅರ್ಥಮಾಡಿಕೊಂಡು ಈ ಕೆಳಗೆ ಸಹಿ ಮಾಡಿರುತ್ತೇನೆ.

ಈ ಮೇಲಿನ ನನ್ನ ಯಾವುದೇ ಪ್ರಮಾಣೀಕೃತ ಹೇಳಿಕೆ ಹಾಗೂ ಸಲ್ಲಿಸಿರುವ ದಾಖಲಾತಿ / ಪ್ರಮಾಣಪತ್ರವು ಸುಳ್ಳು ಎಂದು ಕಂಡುಬಂದಲ್ಲಿ ಕರ್ನಾಟಕ ರಾಜ್ಯ ಮುಕ್ತ ವಿಶ್ವವಿದ್ಯಾನಿಲಯವು ತೆಗೆದುಕೊಳ್ಳಬಹುದಾದ ಯಾವುದೇ ಕ್ರಮಗಳಿಗೆ ಬದ್ಧನಾ/ಳಾಗಿರುತ್ತೇನೆ.

ಮೇಲ್ಕಂಡ ಎಲ್ಲಾ ಅಂಶಗಳು ಸತ್ಯವಾಗಿದೆ ಎಂದು ದೇವರ ಹೆಸರಿನಲ್ಲಿ ಪ್ರಮಾಣ ಮಾಡುತ್ತಾ ಈ ಮೂಲಕ ಒಪ್ಪಿ ಸಹಿ ಮಾಡಿ ಪ್ರಮಾಣೀಕರಿಸುತ್ತೇನೆ.

ಸ್ಥಳ:

ಪ್ರಮಾಣೀಕರಿಸುವವರ ಸಹಿ

ದಿನಾಂಕ:

**ಷರತ್ತುಬದ್ಧ ಶುಲ್ಕ ವಿನಾಯಿತಿಯಡಿ ಪ್ರವೇಶಾತಿ ಪಡೆಯುವ ಪರಿಶಿಷ್ಟ ಜಾತಿ ಹಾಗೂ ಪರಿಶಿಷ್ಟ ವರ್ಗದ ವಿದ್ಯಾರ್ಥಿಗಳು ಸಲ್ಲಿಸಬೇಕಾದ ದಾಖಲೆಗಳು**

1. ಬಾಲ್ಕಿಯಲ್ಲಿರುವ ಆದಾಯ ಪ್ರಮಾಣ (ಪ್ರಸ್ತುತ ವರ್ಷಕ್ಕೆ ಐದು ವರ್ಷ ಅವಧಿ ಮೀರಿರಬಾರದು.) ದೃಢೀಕೃತ ಪ್ರತಿ (ಮರು ಮುದ್ರಣ ಅನ್ವಯಿಸುವುದಿಲ್ಲ).
2. ಎಸ್.ಎಸ್.ಎಲ್.ಸಿ, ಪಿ.ಯು.ಸಿ ಹಾಗೂ ಮುಂದಿನ ವಿದ್ಯಾಭ್ಯಾಸ ಮಾಡಿರುವ ಪದವಿಯ ತರಗತಿಗಳ ಎಲ್ಲಾ ಅಂಕಪಟ್ಟಿಗಳಿಗೆ ನಕಲು ಪ್ರತಿಗೆ ಸ್ವಯಂ ದೃಢೀಕರಿಸಿರಬೇಕು.
3. ಬ್ಯಾಂಕ್ ಪಾಸ್ ಪುಸ್ತಕದ ಸ್ವಯಂ ದೃಢೀಕರಿಸಿದ ನಕಲು ಪ್ರತಿ.
4. ವಿದ್ಯಾರ್ಥಿಯ ಆಧಾರ್ ಕಾರ್ಡ್ ಸ್ವಯಂ ದೃಢೀಕರಿಸಿದ ನಕಲು ಪ್ರತಿ.
5. ವಿದ್ಯಾರ್ಥಿಯ ತಂದೆ ಮತ್ತು ತಾಯಿ ಆಧಾರ್ ಕಾರ್ಡ್‌ನ ಸ್ವಯಂ ದೃಢೀಕರಿಸಿದ ನಕಲು ಪ್ರತಿ.
6. ನೋಟರಿಯವರ ಮುಂದೆ ಪ್ರಮಾಣೀಕರಿಸಿದ 100 (ನೂರು)ರೂ.ಗಳ E- Stamping ಪತ್ರದಲ್ಲಿ ಕರಾರು/ನಿರುದ್ಯೋಗ ಪತ್ರ (ಮೂಲ ಪ್ರತಿ).

- ಮೇಲಿನ ದಾಖಲೆಗಳನ್ನು ದ್ವಿಪ್ರತಿಯಲ್ಲಿ ಪಡೆದು ಅರ್ಹ ಪರಿಶಿಷ್ಟ ಜಾತಿ / ಪರಿಶಿಷ್ಟ ವರ್ಗದ ವಿದ್ಯಾರ್ಥಿಗಳಿಂದ ಅನ್ವಯಿಸುವ ಪ್ರವೇಶಾತಿ ಪ್ರಕ್ರಿಯೆ ಶುಲ್ಕ (Admission Processing Fee) ಕೌಶಲ್ಯಾಭಿವೃದ್ಧಿ ಕೋರ್ಸ್ ಶುಲ್ಕ (Skill Development Fee) ಹಾಗೂ ಆಲ್ಯೂಮಿನ್ ಶುಲ್ಕ (Alumni Fee)ಗಳನ್ನು ಪಾವತಿಸಿಕೊಂಡು ನಿಯಮಾನುಸಾರ ಷರತ್ತುಬದ್ಧ ಶುಲ್ಕ ವಿನಾಯಿತಿ ಸೌಲಭ್ಯದಡಿ ಪ್ರವೇಶಾತಿ ನೀಡಲಾಗುತ್ತಿದೆ.
- ತದನಂತರ ವಿದ್ಯಾರ್ಥಿಗಳು ರಾಜ್ಯ ವಿದ್ಯಾರ್ಥಿವೇತನ ತಂತ್ರಾಂಶ (SSP)ದಲ್ಲಿ ವಿದ್ಯಾರ್ಥಿವೇತನಕ್ಕೆ ಅರ್ಜಿ ಸಲ್ಲಿಸಿ SSP ಅಂತಿಮ ಸ್ವೀಕೃತಿ (State Scholarship Portal (Post Matric) Acknowledgement 2025-26) ಯನ್ನು ಅವರು ಪ್ರವೇಶಾತಿ ಪಡೆಯಲಾದ ಕೇಂದ್ರ ಕಛೇರಿ/ಪ್ರಾದೇಶಿಕ ಕೇಂದ್ರಗಳಲ್ಲಿ ಸಲ್ಲಿಸಿದರಷ್ಟೇ ಪ್ರವೇಶಾತಿ ಮುಂದುವರೆಯುವುದು ಹಾಗೂ ಸದರಿ ವಿದ್ಯಾರ್ಥಿಗಳಿಗೆ ವಿವಿಯಿಂದ ಸಿದ್ಧಪಾಠಗಳನ್ನು ವಿತರಿಸಲಾಗುವುದು ಇಲ್ಲವಾದಲ್ಲಿ ಸದರಿ ಶುಲ್ಕ ವಿನಾಯಿತಿ ಸೌಲಭ್ಯದ ಪ್ರವೇಶಾತಿಯು ತಂತಾನೇ ರದ್ದಾಗುವುದು.
- ರಾಜ್ಯ ವಿದ್ಯಾರ್ಥಿವೇತನ ತಂತ್ರಾಂಶ (SSP)ದ ಮೂಲಕ ಆಯಾಯ ಕೋರ್ಸ್‌ಗೆ ನಿಗದಿ ಮಾಡಿರುವ ವಿಶ್ವವಿದ್ಯಾನಿಲಯದ ಶುಲ್ಕವನ್ನು ಸಮಾಜ ಕಲ್ಯಾಣ ಇಲಾಖೆಯು ವಿದ್ಯಾರ್ಥಿಗಳ ಮೈಯಕ್ತಿಕ ಬ್ಯಾಂಕ್ ಖಾತೆಗೆ ಮಂಜೂರು ಮಾಡುತ್ತದೆ. ಷರತ್ತುಬದ್ಧ ಶುಲ್ಕ ವಿನಾಯಿತಿ ಪ್ರವೇಶಾತಿ ಸೌಲಭ್ಯ ಪಡೆದ ವಿದ್ಯಾರ್ಥಿಗೆ ಸಂಬಂಧಪಟ್ಟ ಇಲಾಖೆಯಿಂದ ವಿದ್ಯಾರ್ಥಿವೇತನ ಮಂಜೂರಾಗಲಿ ಅಥವಾ ಮಂಜೂರಾಗದೆ ಇರಲಿ, ಪ್ರವೇಶಾತಿ ಅಧಿಸೂಚನೆ ಅನ್ವಯ ಪ್ರಥಮ ಸೆಮಿಸ್ಟರ್/ವಾರ್ಷಿಕ ಪರೀಕ್ಷೆಗೂ ಮುನ್ನ ಪ್ರವೇಶಾತಿಯ ಬಾಕಿ ಶುಲ್ಕಗಳನ್ನು ವಿಶ್ವವಿದ್ಯಾನಿಲಯಕ್ಕೆ ಕಡ್ಡಾಯವಾಗಿ ಒಂದೇ ಕಂತಿನಲ್ಲಿ ಪಾವತಿಸಿದಲ್ಲಿ ಮಾತ್ರ ಪ್ರವೇಶಾತಿ ಊರ್ಜಿತವಾಗುವುದು.

ಷರತ್ತುಬದ್ಧ ಶುಲ್ಕ ವಿನಾಯಿತಿ ಪ್ರವೇಶಾತಿ ಸೌಲಭ್ಯವನ್ನು ಮೈಸೂರಿನ ಕರ್ನಾಟಕ ರಾಜ್ಯ ಮುಕ್ತ ವಿಶ್ವವಿದ್ಯಾನಿಲಯದ ಕೇಂದ್ರ ಕಛೇರಿಯ "ವಿದ್ಯಾರ್ಥಿವೇತನ ಘಟಕ" ಹಾಗೂ ರಾಜ್ಯಾದ್ಯಂತ 37 ಪ್ರಾದೇಶಿಕ ಕೇಂದ್ರದಲ್ಲಿ ಮಾತ್ರ ಬಳಸಿಕೊಳ್ಳಬಹುದಾಗಿದೆ. ಕರಾಮುವಿಯ ಕಲಿಕಾ ಸಹಾಯಾರ್ಥಿ ಕೇಂದ್ರ (Learner Support Center / Study Center) ಗಳಲ್ಲಿ ಈ ಸೌಲಭ್ಯಕ್ಕೆ ಅವಕಾಶವಿರುವುದಿಲ್ಲ.

**ಪರಿಶಿಷ್ಟ ಜಾತಿ/ವರ್ಗದ ವಿದ್ಯಾರ್ಥಿಗಳು ಪೂರ್ಣಶುಲ್ಕ ಪಾವತಿಸಿ ಪ್ರವೇಶಾತಿ ಪಡೆದು ನಂತರ ರಾಜ್ಯ ವಿದ್ಯಾರ್ಥಿವೇತನಕ್ಕೆ ಅರ್ಜಿ ಸಲ್ಲಿಸಿ ಪಾವತಿಸಿದ ಶುಲ್ಕ ಮರುಭರಿಕೆಗೆ ಅನುಸರಿಸಬೇಕಾದ ಸೂಚನೆಗಳು**

ಶೈಕ್ಷಣಿಕ ಸಾಲಿನಲ್ಲಿ ಶುಲ್ಕ ಮರುಭರಿಕೆ ಸೌಲಭ್ಯಕ್ಕಾಗಿ ಅರ್ಜಿ ಸಲ್ಲಿಸುವ ಪರಿಶಿಷ್ಟ ಜಾತಿ / ವರ್ಗದ ವಿದ್ಯಾರ್ಥಿಗಳು ಅವರವರ ತಾಲ್ಲೂಕಿನ ಸಮಾಜ ಕಲ್ಯಾಣ ಅಧಿಕಾರಿಗಳ ಕಛೇರಿಯಲ್ಲಿ ಅಥವಾ ಯೋಜನಾ ಸಮನ್ವಯಾಧಿಕಾರಿಗಳು, ಸಮಗ್ರ ಗಿರಿಜನ ಅಭಿವೃದ್ಧಿ ಯೋಜನೆ ಕಛೇರಿಯಲ್ಲಿ ಮಾಹಿತಿ ಪಡೆದುಕೊಂಡು ಆನ್-ಲೈನ್ ಮೂಲಕವಾಗಿ ಅರ್ಜಿಯನ್ನು ಭರ್ತಿಮಾಡಿ ಶುಲ್ಕ ರಸೀದಿಯನ್ನು ಒಳಗೊಂಡಂತೆ (ಆದಷ್ಟು ಬೇಗನೆ) ಕರ್ನಾಟಕ ರಾಜ್ಯ ಮುಕ್ತ ವಿಶ್ವವಿದ್ಯಾನಿಲಯದ ಕೇಂದ್ರ ಕಚೇರಿ, ಮೈಸೂರು ಅಥವಾ ಯಾವ ಪ್ರಾದೇಶಿಕ ಕೇಂದ್ರದ ವ್ಯಾಪ್ತಿಗೆ ಒಳಪಡುತ್ತಾರೋ ಆ ಪ್ರಾದೇಶಿಕ ಕೇಂದ್ರಕ್ಕೆ ಈ ಕೆಳಕಂಡ ದಾಖಲಾತಿಗಳೊಂದಿಗೆ ಸಲ್ಲಿಸುವುದು.

ಶುಲ್ಕ ಮರುಭರಿಕೆಗೆ ಅರ್ಜಿ ಸಲ್ಲಿಸಿದ ವಿದ್ಯಾರ್ಥಿಗಳು ಲಗತ್ತಿಸಬೇಕಾದ ದಾಖಲಾತಿಗಳ ಪಟ್ಟಿಗಳು			
01	ವಿದ್ಯಾರ್ಥಿಯ ರಾಜ್ಯ ವಿದ್ಯಾರ್ಥಿವೇತನ ತಂತ್ರಾಂಶ (SSP) ದ ಅಂತಿಮ ಸ್ವೀಕೃತಿ (Acknowledgement) ಪತ್ರಿಕೆ	02	ಪ್ರವೇಶಾತಿ ಅರ್ಜಿಯ ಮುದ್ರಿತ ಪ್ರತಿ
03	ಕರಾಮುವಿಯ ಗುರುತಿನ ಚೀಟಿ (ID Card)	04	ದೃಢೀಕರಿಸಿದ ಶುಲ್ಕ ಪಾವತಿ ರಶೀದಿ
05	ಜಾತಿ ಮತ್ತು ಚಾಲ್ತಿಯಲ್ಲಿರುವ ಆದಾಯ ಪ್ರಮಾಣ ಪತ್ರ	06	ಆಧಾರ್ ಕಾರ್ಡ್
07	ಬ್ಯಾಂಕ್ ಪಾಸ್ ಪುಸ್ತಕ	08	ಹತ್ತನೇ ತರಗತಿಯ ಅಂಕಪಟ್ಟಿ

**2025-26ನೇ ಶೈಕ್ಷಣಿಕ ಸಾಲಿನ ಜುಲೈ ಮತ್ತು ಜನವರಿ ಅವಧಿಗಳಲ್ಲಿ SSP ಯಲ್ಲಿ ವಿದ್ಯಾರ್ಥಿವೇತನಕ್ಕೆ ಅರ್ಜಿ ಸಲ್ಲಿಸುವ ಪರಿಶಿಷ್ಟ ಜಾತಿ / ಪರಿಶಿಷ್ಟ ವರ್ಗ ವಿದ್ಯಾರ್ಥಿಗಳು ಕೆಳಗಿನ ಮಾನದಂಡಗಳನ್ನು ಅನುಸರಿಸಬೇಕಾಗುತ್ತದೆ.**

- ವಿದ್ಯಾರ್ಥಿವೇತನಕ್ಕಾಗಿ ಅರ್ಜಿ ಸಲ್ಲಿಸಲು ಬಳಸಬೇಕಾದ ವೆಬ್ ಸೈಟ್ ವಿಳಾಸ: <https://ssp.postmatric.karnataka.gov.in>
- ವಿದ್ಯಾರ್ಥಿಗಳು ಕಡ್ಡಾಯವಾಗಿ ತಮ್ಮ ಬ್ಯಾಂಕ್ ಖಾತೆಗೆ ಆಧಾರ್ ಸಂಖ್ಯೆಯನ್ನು (Seeding) ಅಥವಾ (NPCI / E-KYC) ಮಾಡಿಕೊಳ್ಳಬೇಕು ಇಲ್ಲವಾದ್ದಲ್ಲಿ ನಿಮ್ಮ ಬ್ಯಾಂಕ್ ಖಾತೆಗೆ ವಿದ್ಯಾರ್ಥಿವೇತನ ಮರುಭರಿಕೆ/ಜಮೆಯಾಗುವುದಿಲ್ಲ.
- SSP ID ಯ ಸಂಖ್ಯೆಯನ್ನು ಪ್ರವೇಶಾತಿ ಪಡೆದ ಕೇಂದ್ರ ಕಚೇರಿ ಮತ್ತು ಆಯಾಯ ಪ್ರಾದೇಶಿಕ ಕೇಂದ್ರಗಳಲ್ಲಿಯೇ ಕಡ್ಡಾಯವಾಗಿ Update ಮಾಡಿದ ವಿದ್ಯಾರ್ಥಿಗಳಿಗೆ ಮಾತ್ರವೇ ವಿದ್ಯಾರ್ಥಿವೇತನಕ್ಕೆ (SSP) ಅರ್ಜಿ ಸಲ್ಲಿಸಲು ಅರ್ಹರಾಗಿರುತ್ತಾರೆ.
- ಎಸ್.ಎಸ್.ಎಲ್.ಸಿ ಅಂಕಪಟ್ಟಿಯಲ್ಲಿ ಇರುವಂತೆಯೇ ಹೆಸರು ಆಧಾರ್ ಕಾರ್ಡ್ ಮತ್ತು ಇತರೆ ಜಾತಿ ಮತ್ತು ಆದಾಯ ಪ್ರಮಾಣ ಪತ್ರಗಳಲ್ಲಿ ಒಂದೇ ತರನಾಗಿರಬೇಕು.
- ಕಾಲೇಜು ಹೆಸರನ್ನು **Karnataka State Open University-U0228**ನ್ನು ಆಯ್ಕೆ ಮಾಡಿಕೊಳ್ಳುವುದು.
- **Do you have USN (University Registration number)**ಅನ್ನು **Yes** ಎಂದು ಆಯ್ಕೆ ಮಾಡಿಕೊಳ್ಳಬೇಕು.
- ಪ್ರವೇಶಾತಿ ಪಡೆದ ಕೋರ್ಸಿನ **Displine** ಮತ್ತು **SSP**ಯಲ್ಲಿ ಬಿತ್ತರಿಸುವ **Displine** ಹೊಂದಾಣಿಕೆಯಾದಲ್ಲಿ ಮಾತ್ರ ವಿದ್ಯಾರ್ಥಿವೇತನಕ್ಕೆ ಅರ್ಜಿ ಸಲ್ಲಿಸಲು ಮುಂದುವರಿಸಿ, ಇಲ್ಲವಾದ್ದಲ್ಲಿ ಪ್ರವೇಶಾತಿ ಪಡೆದ ಕೇಂದ್ರ ಕಚೇರಿ ಹಾಗೂ ಆಯಾಯ ಪ್ರಾದೇಶಿಕ ಕೇಂದ್ರಕ್ಕೆ ಬೇಟಿ ನೀಡಿ ಸಮಸ್ಯೆಯನ್ನು ಬಗೆಹರಿಸಿಕೊಳ್ಳಬಹುದು.
- 2004ರ ಹಿಂದೆ **SSLC** ಹಾಗೂ 2010ರ ಹಿಂದೆ **PUC** ಉತ್ತೀರ್ಣರಾಗಿರುವ ವಿದ್ಯಾರ್ಥಿಗಳು **SSLC, PUC** ಮೂಲ ಅಂಕಪಟ್ಟಿಗಳನ್ನು **SSP**ಯಲ್ಲಿ ಅಪ್‌ಲೋಡ್ ಮಾಡಿ **PM Number** ಪಡೆದು ನಂತರ ವಿದ್ಯಾರ್ಥಿಗಳೇ ಆಯಾಯ ವರ್ಗದ ಜಿಲ್ಲಾ ಕಲ್ಯಾಣ ಇಲಾಖೆಯಲ್ಲಿ ಇ-ದೃಢೀಕರಣ ಮಾಡಿಸಿಕೊಂಡು ಪುನಃ **SSP**ಯ ಉಳಿದ ಪ್ರಕ್ರಿಯೆಗಳನ್ನು ಪೂರ್ಣಗೊಳಿಸಿ ಅಂತಿಮವಾಗಿ ಬರುವ **SSP Acknowledgement** ನ್ನು ಪಡೆಯುವುದು.
- **Online** ಮೂಲಕ ಅರ್ಜಿಯನ್ನು ಎಚ್ಚರಿಕೆಯಿಂದ ಎಲ್ಲಾ 5 ಹಂತಗಳನ್ನು ಪರಿಪೂರ್ಣವಾಗಿ ತಪ್ಪಿಲ್ಲದೆ ಭರ್ತಿ ಮಾಡಬೇಕು.
- ಪ್ರವೇಶಾತಿ ಪಡೆದ ಸಾಲಿನಲ್ಲಿಯೇ ಈ ಮೇಲೆ ಸೂಚಿಸಿರುವಂತೆ ವಿದ್ಯಾರ್ಥಿವೇತನಕ್ಕೆ ಅರ್ಜಿ ಸಲ್ಲಿಸತಕ್ಕದ್ದು. ತಪ್ಪಿದಲ್ಲಿ ನಂತರದ ಶೈಕ್ಷಣಿಕ ಸಾಲುಗಳಲ್ಲಿ ಅರ್ಜಿ ಸಲ್ಲಿಸಲು ಬರುವುದಿಲ್ಲ.

ಕರ್ನಾಟಕ ರಾಜ್ಯ ಮುಕ್ತ ವಿಶ್ವವಿದ್ಯಾನಿಲಯದ ಕೇಂದ್ರ ಕಚೇರಿಯ ವಿದ್ಯಾರ್ಥಿವೇತನ ಘಟಕದ ಅಧಿಕಾರಿ/ಸಿಬ್ಬಂದಿಗಳ ದೂರವಾಣಿ: ವಿದ್ಯಾರ್ಥಿಗಳ ಸಹಾಯವಾಣಿ		
	ಕೇಂದ್ರ ಕಚೇರಿ ವಿದ್ಯಾರ್ಥಿವೇತನ ಘಟಕದ ದೂರವಾಣಿ ಸಂಖ್ಯೆ	0821-2500073, 0821-2519943, 8690544544
ಕ್ರ.ಸಂ	ಹೆಸರು ಮತ್ತು ಪದನಾಮ	ಅಧಿಕಾರಿಗಳ ದೂರವಾಣಿ ಸಂಖ್ಯೆ
01	ಡಾ   ಚಿನ್ನಯ್ಯ ಪಿ.ಎಂ, ವಿಶೇಷಾಧಿಕಾರಿ, ವಿದ್ಯಾರ್ಥಿವೇತನ ಘಟಕ	9164556402
02	ಶ್ರೀ ನಾಗೇಂದ್ರ ಆರ್ ಸಹಾಯಕ ಕುಲಸಚಿವ, ವಿದ್ಯಾರ್ಥಿವೇತನ ಘಟಕ	8073331535
03	ಡಾ   ಮೊಹಮ್ಮದ್ ನಸ್ರೂಲ್ಲ ಖಾನ್ ಸಂಯೋಜನಾಧಿಕಾರಿ (ಆಲ್ಪ್ರಸಂಖ್ಯಾತರು)	9845916982
04	ಶ್ರೀ. ಹರ್ಷ. ಎಂ, ಪ್ರ.ದ.ಗು	9620204593
05	ಎಲ್ಲಾ ಪ್ರಾದೇಶಿಕ ಕೇಂದ್ರಗಳ ವಿಳಾಸ ಮತ್ತು ದೂರವಾಣಿ ಸಂಖ್ಯೆಗಳಿಗಾಗಿ <a href="http://www.ksoumysuru.ac.in">www.ksoumysuru.ac.in</a> ನಲ್ಲಿ ಪಡೆಯಬಹುದಾಗಿದೆ.	

## List of Gold Medals and Cash Prizes for Meritorious Students

### Under-Graduate students

Sl. No.	Name of the Endowment	Instituted Year	Degree/ Programme
1	Sri B.S. Channabasappa & Sons, Davanagere Endowment Cash Prize	2000	B.A. II Rank
2	ICC&CE Silver Jubilee Endowment Cash Prize (Highest Marks Secured by Women Candidate)	2001	B.A./B.Com.
3	Corporation Bank Endowment Gold Medal	2001	B.A.
4	Corporation Bank Endowment Gold Medal	2001	B.Com.
5	Dr.N.S. Ramegowda, Former Vice Chancellor, KSOU Endowment Gold Medal (Highest Marks Secured by Women Candidate)	2003	B.A.
6	Late Smt. Vathsala Ramakrishna, Professor of Music, University of Mysore Endowment Cash Prize	2004	B.Com. II Rank
7	The Institute of Chartered Accountants of India Gold Medal	2014	B.Com I Rank
8	Alumini Association (Senior Student Association) Gold Medal	1999	B.Ed
9	Smt. Narasamma and Sri. T. Narayana Shastri Smt. Tarabai and Sri. P. Raghavendra Rao Two Gold Medal	2012	Special B.Ed

### B.Lib.I.Sc

1	Sri Sanna Rame Gowda, (Ex- Librarian, Mysore University) & Smt Devammani D/o Mirle Ramegowda & Smt Ningamma Endowment Gold Medal	2005	B.Lib.I.Sc
---	--	------	------------

### Post-Graduate Students

Sl. No.	Name of the Endowment	Instituted Year	Post Graduate Programme
1	Smt. Doddammanni Dr.Chaduranga Endowment Cash Prize	1998	M.A English
2	Late Smt. Meera Bai Endowment Gold Medal	1999	M.A Hindi
3	Late Smt. Yallamma & Sri.Durugaiah Jajuru Late Smt. Ningamma & Sri.Srinivasaiah Talakadu Endowment Cash Prize (I Class)	2000	M.A Kannada (II Rank)
4	Prof.B.K.Shivaramaiah Memorial Endowment Cash Prize	2000	M.A Sanskrit
5	Dr.Mumtaz Ahmed Khan Endowment Gold Medal	2000	M.A Urdu
6	Sri.Jayachamarajapura Shivappa Gowda Parashivamurthy & Smt. Shivamma Parashivamurthy Endowment Cash Prize	2000	MA Kannada
7	Smt. Kamalamma & Sri.K.Seetharama Rao Endowment Cash Prize	2000	M.A Economics
8	Mrs.Sulthan Bi & Mr.Mustafa Alik Khan Memorial Endowment Gold Medal	2000	M.A Sociology
9	ICC & CE Silver Jubilee Endowment Gold Medal	2001	M.A Kannada
10	ICC & CE Silver Jubilee Endowment Gold Medal	2001	M.A English

11	ICC & CE Silver Jubilee Endowment Gold Medal	2001	M.A Sanskrit
12	ICC & CE Silver Jubilee Endowment Gold Medal	2001	M.A History
13	ICC & CE Silver Jubilee Endowment Gold Medal	2001	M.A Economics
14	ICC & CE Silver Jubilee Endowment Gold Medal	2001	M.A Sociology
15	ICC & CE Silver Jubilee Endowment Gold Medal	2001	M.A JMC
16	ICC & CE Silver Jubilee Endowment Gold Medal	2001	M.A Psychology
17	ICC & CE Silver Jubilee Endowment Cash Prize (Highest Marks Scored by Female Candidate)	2001	M.A/M.Com
18	Ms.Kantheti Charitable Trust, Endowment Cash Prize	2001	M.Com
19	Mysore Paints & Varnish Ltd., Mysore Endowment Gold Medal	2001	M.Com
20	Abdul Gaffar Sheriff Gold Medal	2001	M.A Urdu
21	Prof.M.Madaiah, Ex Vice Chancellor, University of Mysore, Abinandana Samithi Endowment Cash Prize	2001	M.A Economics
22	Sri.K.H.Patil Prathisthana Endowment Gold Medal	2002	M.A Pol. Sci.
23	Smt. B.A.Shantha Bai Endowment Cash Prize	2003	M.A Hindi
24	Mr Sadashiv Bhaskar Sirsat Endowment Gold Medal	2003	M.A History
25	Sri.K.G.Ramakrishna, Rtd, Prof. of Commerce, KSOU, Mysore Endowment Cash Prize	2004	M.Com (II Rank)
26	Late Sri.Veerabasaiah Puranik Math Freedom Fighter & Sri Shivamma, Davangere Endowment Cash Prize (Female Candidate with Highest Marks)	2005	M.A Pol. Sci.
27	Late. K.Hirannaiah Memorial Cash Prize	2005	M.A History
28	Late T.Venkannagudda, Former Registrar, KSOU, Mysore, Endowment Cash Prize (Highest Marks Female Candidate SC Community)	2005	M.A History
29	Late M.Venkatesh Endowment Cash Prize (Physically Challenged or Senior Citizens Highest Marks)	2005	M.A Sanskrit
30	Bale Angadi N Gopal Rao & Sharada Bai Memorial Endowment Cash Prize (Highest Marks Scorer by Female Candidate)	2009	M.A History
31	Dr.Vishnuvardhan Memorial Endowment Gold Medal (First Rank with Highest Marks)	2010	M.A JMC
32	Sri. S.Shivaram (Film Actor) Endowment Gold Medal (First Rank with Highest Marks)	2010	M.A Kannada
33	Prof. K S Rangappa Former Vice-Chancellor KSOU Endowment Gold Medal (Highest Marks secured by Master's degrees)	2013	Any Master Degree
34	Research Scholars of Dr. Jagadeesha Cash Prize	2019	M.Com
35	National Conference on Economic Recession and Management Strategies Cash Prize	2009	MBA

36	International Conference on Re-Engineering of Management Education Cash Prize	2012	MBA
37	Sri B R L Iyengar and S R Krishnaswamy Gold Medal	2001	MEd
38	Alumini Association (Senior Student Association) Gold Medal	1999	MEd
39	Karnataka Bank Limited Mangalore Gold Medal	2012-13	MSc Chemistry
40	Sri Bhandi Adinarayan Reddy Endowment Gold Medal (First Rank with Highest Marks)	2011	M.A Telugu
41	Sri Bhandi Adinarayan Reddy Endowment Gold Medal (Special Poet with Highest Marks)	2011	M.A Telugu

#### **M.Lib.I.Sc**

1	ICC & CE Silver Jubilee Endowment Gold Medal	2001	M.Lib.I.Sc
2	Prof. Lalitha Aswath Gold Medal (Only Women)	2020	M.Lib.I.Sc

#### **Research Scholar Students**

1	Sri Sringeri Kulapati Shankaranarayana Joyish Cash Prize	2012	PhD Sanskrit
---	--	------	--------------

## Details of General Fee

Sl. No.	Description	Amount (Rs.)
01	Change of Name	1,100/-
02	Duplicate set of printed Study Materials (each block) same programme / other programme	100/-   200/-
03	Re-enrollment fees for B.S.W and B.B.A., after one year break	1,100/-
04	Re-enrollment fees for B.S.W and B.B.A., after two years break	2,200/-
05	Issue of No Due Certificate / Transfer Certificate	550/-
06	Issue of Study Certificate	550/-
07	Change of Study Centres	1,100/-
08	Change of Medium of Instruction/Subject/Course	1,100/-
09	Duplicate Identity Card	330/-
10	Direct Admission Fee for II year B.S.W and B.B.A.,	3,300/-
11	Direct Admission Fee for III year B.S.W and B.B.A.,	3,300/-
12	Study Certificate for NRI / Foreign Students / Bonafide Certificate	2,200/-

**Note :** University has right to cancel or continue the admission for the programme Which has not crossed admission of minimum 20 students.

## Examination related Other Fee

Sl. No.	Description	Amount (Rs.)
01	Change of Examination Centre	1,400/-
02	Revaluation per Paper / Course	1,400/-
03	Photo copy for each Paper / Course	1,400/-
04	Duplicate Marks Card (Additional Search Fee Rs.100/- per year)	600/-
05	Consolidated Marks Card (Additional Rs.100/- for delay per year)	600/-
06	Migration Certificate (Additional Rs.100/- Search Fee per year)	600/-
07	Provisional (Pass Certificate) Degree Certificate	1000/-
08	Convocation Fee (in-person – Medalists & Rank holders) + Alumni fee	1350+550
09	Convocation Fee (in Absentia – Additional Search Fee per year Rs.50/-) + Alumini fee	1700+550
10	Genuinity Certificate	1000/-
11	CBCS (Semester mode) Genuinity Certificate/ Verification Certificate for I (Transcript per Semester)	1,100/-
	Extra postal charges outside India	2,500/-
12	Non CBCS (Year mode) Genuinity Certificate/ Verification Certificate for I (Transcript per Year)	2,200/-
	Extra postal charges outside India	2,500/-
13	Name Correction of Marks Cards (per Marks Card)	300/-

14	Duplicate Degree Certificate (Search Fee Rs.50/- per year) + Alumni Fee	1700+550/-
15	Rank Certificate Fee	1000/-

**Note:**

- Examination related other fee shall be paid only through challan. Fee paid will not be refunded or adjusted to the next examination under any circumstances. Students should submit their filled-in application form along with fee paid details to “The Registrar (Evaluation), KSOU, Mukthagangothri, Mysuru – 570 006”.
- After University’s convocation notification, candidates who have passed their degree examination, students submit their prescribed application and fee paid through challan to “The Registrar (Evaluation), KSOU, Mysuru”. For further information browse University website.
- For obtaining Provisional Certificate, the candidate has to submit an application along with fee paid challan and photo copy of marks cards to “The Registrar (Evaluation), KSOU, Mysuru”.
- Migration Certificate: For obtaining Migration Certificate, the candidate has to furnish No Due Certificate from the Admission Section and Library of KSOU.